

TARA ULTRA PIVOT Single-lever mixer - Brushed Champagne (22kt Gold)

TARA ULTRA

33 845 875 Product version from 5/3/2021



- 552mm projection
- pivotable spout 360°
- air-enriched flow
- height of mixer 372 mm
- height up to aerator 290 mm
- rosette 55 mm
- hole diameter 30 mm
- max. flow 8 l/min at 3 bar flow pressure
- lead-free
- This product can help a building meet the requirements of Green Building Rating Systems, e.g. LEED®, BREEAM®, DGNB

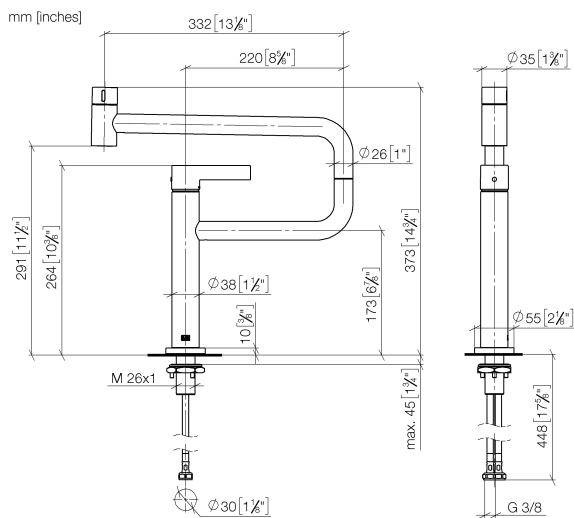
	Brushed Champagne (22kt Gold)	33 845 875-46
	Chrome	33 845 875-00
	Brushed Platinum	33 845 875-06
	Platinum	33 845 875-08
	Durabronze (23kt Gold)	33 845 875-09
	Dark Chrome	33 845 875-19
	Brushed Durabronze (23kt Gold)	33 845 875-28
	Brushed Bronze	33 845 875-42
	Champagne (22kt Gold)	33 845 875-47
	Brushed Chrome	33 845 875-93
	Brushed Dark Platinum	33 845 875-99

Recommended miscellaneous

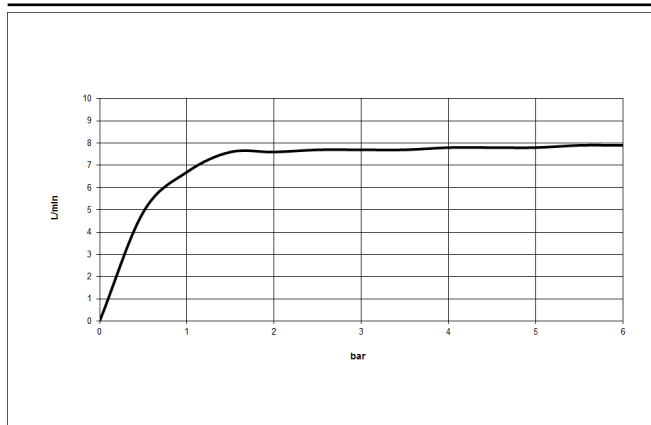
Strainer waste with control handle 10 710 970-46
- Brushed Champagne (22kt Gold)



33 845 875 Product version from 5/3/2021



Flow rate chart



Codes & Standards

DIN 4109

Executive Order
no. 1007

ISO 3822

Ü-Zeichen



TARA ULTRA PIVOT Single-lever mixer - Brushed Champagne (22kt Gold)

TARA ULTRA

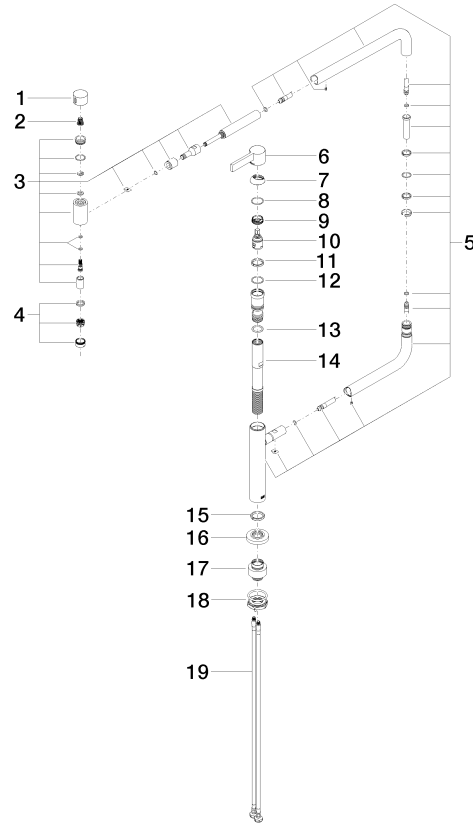
33 845 875 Product version from 5/3/2021

Certificates and sustainability

LGA_28

GDV_0400

Parts for other
finishes can be found
here: [Chrome](#)



Spare parts list

No.	Item Number	Name	Quantity used	Delivery time
17	12 845 970 90	Extension set -	1.00	2
3	90 19 87 001 00-46	spout	1.00	30
14	09 30 01 126 90	connection	1.00	2
4	90 23 01 026 07-46	aerator	1.00	30
10	90 15 05 042 00 90	cartridge	1.00	2
19	04 30 04 101 00 90	hose	2.00	2
5	90 28 22 257 00-46	joint	1.00	30
9	09 24 04 266 90	nut	1.00	2
6	90 20 87 004 00-46	handle	1.00	30
16	09 27 87 033-46	rosette	1.00	30
7	09 28 30 013-46	cover	1.00	30
15	09 28 10 159 90	ring	1.00	2
2	90 12 12 002 00 90	fixing cap	1.00	2
18	04 30 11 085 87 90	fixing set	1.00	2
11	09 28 10 156 90	ring	1.00	2
8	09 14 10 091 90	seal	1.00	2
1	09 20 62 025-46	handle	1.00	30
13	09 14 10 081 90	seal	1.00	2
12	90 14 10 063 00 90	seal	1.00	2