



Concealed two-way diverter -

35 202 970 90 Product version from 4/1/2022



- red brass, lead-free
- 1x male 1/2" connector
- 2x female thread 1/2" outlet
- cut-to-length spindle and sleeve
- dust cover
- anti-water packing
- soundproofing
- WRAS

Required miscellaneous

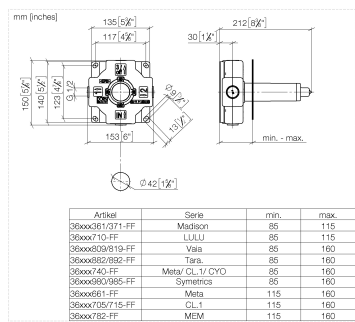
Leak protection 1/2" -

12 010 970 90

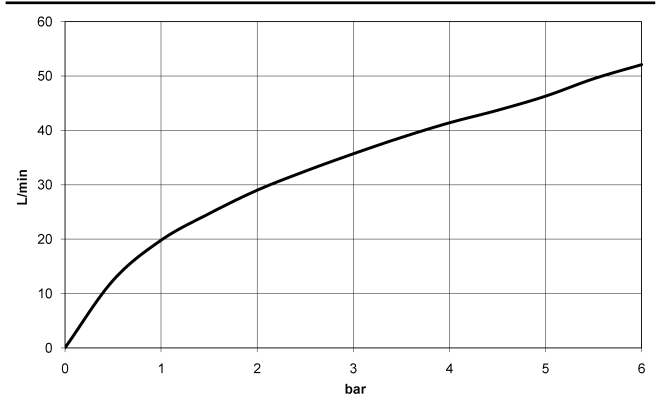


Concealed two-way diverter -

35 202 970 90 Product version from 4/1/2022



Flow rate chart



Codes & Standards

Scottish Water
Byelaws

UK Water Supply
Regulations



Concealed two-way diverter -

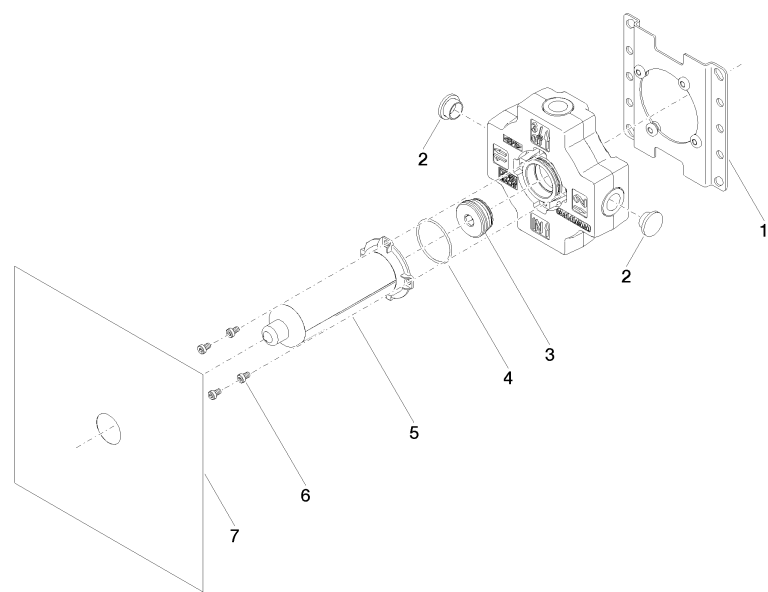
35 202 970 90 Product version from 4/1/2022

Certificates

WRAS_2307

Concealed two-way diverter -

35 202 970 90 Product version from 4/1/2022



Spare parts list

No.	Item Number	Name	Quantity used	Delivery time
	1 04 17 20 252 00 90	base	1	60
	2 09 31 20 092 90	plug	4	2
	3 90 31 20 131 00 90	plug	1	2
	4 09 14 10 210 90	seal	1	2
	5 04 21 02 180 10 90	cap	1	2
	6 09 30 30 112 90	screw	4	2
	7 04 14 03 116 00 90	gasket kit	1	2