



Concealed wall installation box -

35 206 970 90



- female thread 1/2" connection
- dust cover
- anti-water packing
- WRAS 2106011

Required miscellaneous

Leak protection 1/2" - 12 010 970 90



Recommended miscellaneous

xGRID Attachment set for integrating in the dry wall construction - 12 340 970 90



Required miscellaneous

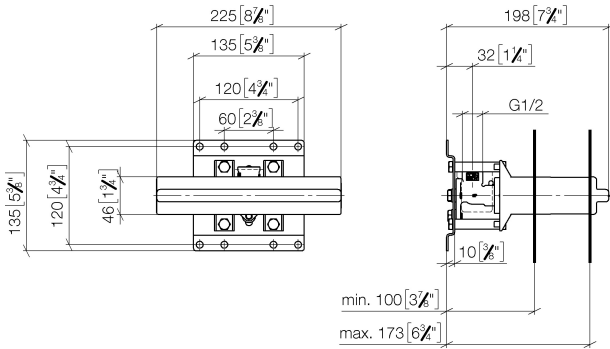
xGRID Installation track 555 mm - 12 360 970 90



Concealed wall installation box -

35 206 970 90

mm [inches]



Codes & Standards

DIN 4109

ISO 3822

Scottish Water
Byelaws

UK Water Supply
Regulations

Ü-Zeichen

Certificates

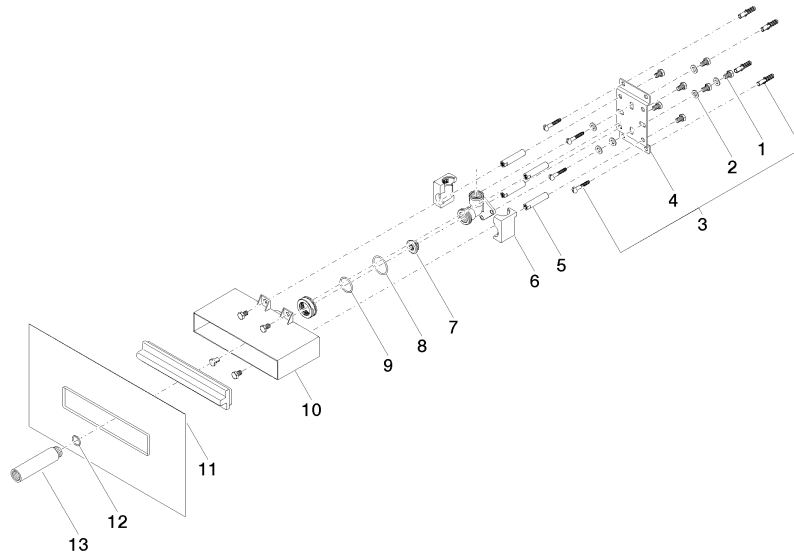
LGA_19

WRAS_2106

Concealed wall installation box -

35 206 970 90

Product version from 3/7/2023





Concealed wall installation box -

35 206 970 90

Spare parts list

Product version from 3/7/2023

No.	Item Number	Name	Quantity used	Delivery time
	09 30 30 152 90	screw	28	2