


Concealed wall-mounted single-lever mixer -

35 860 970 90
Product version from 5/1/2022




- 2x female thread 1/2" connections
- 1x female thread 1/2" outlet for wall spout
- 1x female thread 1/2" outlet
- 2x dust cover
- anti-water packing
- soundproofing
- gauge 100 mm
- WRAS


Required miscellaneous

<div>  </div>	<div> Leak protection 1/2" - •This article is needed 2x. </div>	<div> 12 010 970 90 </div>
--	---	----------------------------


Recommended miscellaneous

<div>  </div>	<div> Extension 20 mm - •Not suitable for combining with META PURE (36 86X 664-FF). </div>	<div> 12 869 970 90 </div>
--	--	----------------------------

Recommended miscellaneous

<div>  </div>	<div> Extension 20 mm - •Can only be combined with exposed trim parts 36 86X 664-FF. </div>	<div> 12 870 970 90 </div>
--	---	----------------------------

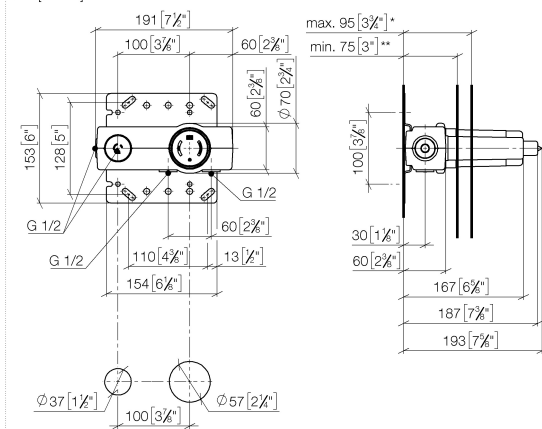
Recommended miscellaneous

<div>  </div>	<div> Adapter for reversed water connections - •Not suitable for combining with META PURE (36 86X 664-FF). </div>	<div> 12 880 970 90 </div>
--	---	----------------------------

Concealed wall-mounted single-lever mixer -

35 860 970 90 Product version from 5/1/2022

mm [inches]



	**min	*max
+ 1286997090	95 [3 3/4"]	115 [4 1/2"]
+ 1287097090	95 [3 3/4"]	115 [4 1/2"]

Flow rate chart



Codes & Standards

EN 817

Scottish Water
Byelaws

UK Water Supply
Regulations

XP P 41-280



Concealed wall-mounted single-lever mixer -

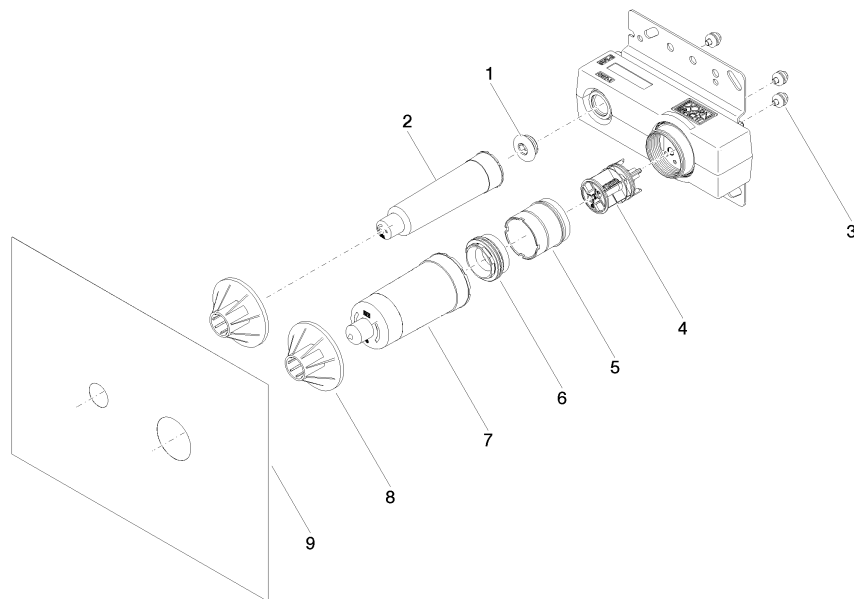
35 860 970 90 Product version from 5/1/2022

Certificates

WRAS_2010	ACS_21 ACC LY	DVGW_DW- 6512DN0	WRAS_2107
-----------	---------------	---------------------	-----------

Concealed wall-mounted single-lever mixer -

35 860 970 90 Product version from 5/1/2022



Spare parts list

No.	Item Number	Name	Quantity used	Delivery time
1	04 31 20 006 00 90	plug	1	2
2	09 21 02 173 90	cap	1	2
3	90 30 11 086 00 90	fixing set	3	60
4	90 31 20 107 00 90	plug	1	2
5	90 17 01 238 00 90	sleeve	1	2
6	90 24 04 349 00 90	threaded connector	1	2
7	09 21 02 182 90	cap	1	2
8	90 23 01 174 00 90	sleeve	2	2
9	04 14 03 074 01 90	gasket kit	1	2