

Concealed single-lever mixer with cover plate with integrated shower connection - Dark Chrome

SERIES SPECIFIC

36 046 660 Product version from 4/1/2024



- cover plate Ø 80 mm
- Intrinsic protection against back flow.**
- Intrinsic protection against back flow.

	Dark Chrome	36 046 660-19
	Chrome	36 046 660-00
	Brushed Platinum	36 046 660-06
	Platinum	36 046 660-08
	Brushed Durabrass (23kt Gold)	36 046 660-28
	Matte Black	36 046 660-33
	Brushed Dark Brass	36 046 660-39
	Brushed Bronze	36 046 660-42
	Brushed Champagne (22kt Gold)	36 046 660-46
	Champagne (22kt Gold)	36 046 660-47
	Brushed Chrome	36 046 660-93
	Brushed Dark Platinum	36 046 660-99

Required miscellaneous

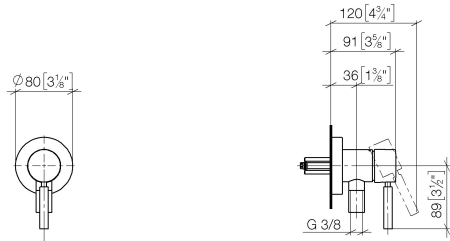
- Concealed wall mounting -** 35 050 970 90
- min. recess depth 80 mm
 - max. recess depth 105 mm



Concealed single-lever mixer with cover plate with integrated shower connection - Dark Chrome

SERIES SPECIFIC

36 046 660 Product version from 4/1/2024
mm [inches]



Flow rate chart



Codes & Standards

DIN 4109 ISO 3822 Ü-Zeichen



Concealed single-lever mixer with cover plate with integrated shower connection - Dark Chrome

SERIES SPECIFIC

36 046 660 Product version from 4/1/2024

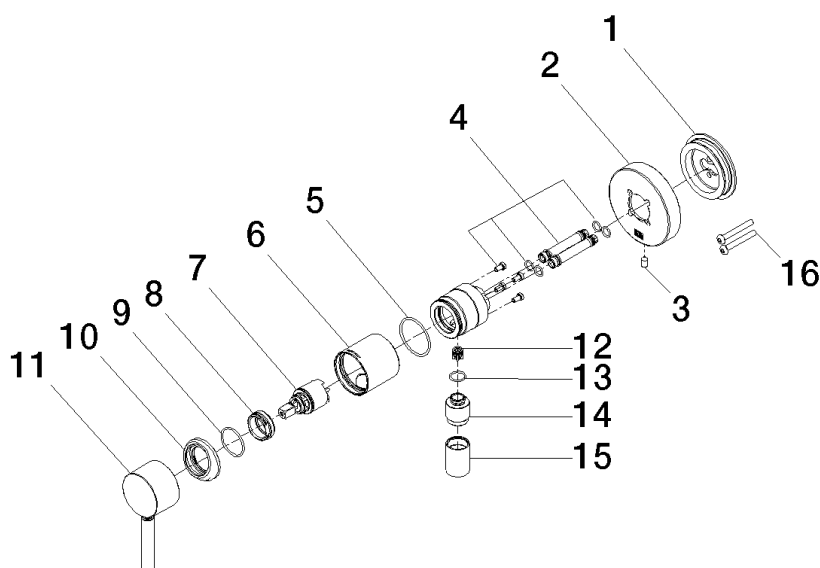
Certificates and sustainability

LGA_38

Concealed single-lever mixer with cover plate with integrated shower connection - Dark Chrome

SERIES SPECIFIC

36 046 660 Product version from 4/1/2024



Spare parts list

No.	Item Number	Name	Quantity used	Delivery time
	5 09 14 10 111 90	seal	1.00	2
	16 90 30 30 229 00 90	screw	2.00	2
	14 09 24 03 281-19	nipple	1.00	20
	7 90 15 05 044 00 90	cartridge	1.00	2
	12 09 23 01 131 90	back-flow preventer	1.00	2
	9 09 14 10 120 90	seal	1.00	2
	13 90 14 10 021 00 90	seal	1.00	2
	1 90 30 11 232 00 90	disc	1.00	2
	11 90 20 66 006 00-19	handle	1.00	20
	4 90 24 01 046 00 90	connection	2.00	2
	2 90 27 66 023 00-19	rosette	1.00	-
Spare part can no longer be ordered, please order the replacement item				
	6 90 18 40 320 00-19	sleeve	1.00	-
Spare part can no longer be ordered, please order the replacement item				
	10 09 28 30 041-19	cover	1.00	20
	8 09 24 04 266 90	nut	1.00	2
	3 09 31 11 144 90	pin	1.00	2
	15 90 21 02 069 00-19	cover	1.00	20