

Concealed single-lever mixer with diverter - Chrome

SERIES SPECIFIC

36 120 660 Product version up to 2/20/2020



- automatic diverter
- cover plate Ø 150 mm
- WRAS

| | | |
|---|-------------------------------------|---------------|
|  | Chrome | 36 120 660-00 |
|  | Brushed Platinum | 36 120 660-06 |
|  | Platinum | 36 120 660-08 |
|  | Dark Chrome | 36 120 660-19 |
|  | Light Gold | 36 120 660-26 |
|  | Brushed Light Gold | 36 120 660-27 |
|  | Brushed Durabronze (23kt Gold) | 36 120 660-28 |
|  | Matte Black | 36 120 660-33 |
|  | Brushed Bronze | 36 120 660-42 |
|  | Brushed Champagne (22kt Gold) | 36 120 660-46 |
|  | Champagne (22kt Gold) | 36 120 660-47 |
|  | Brushed Chrome | 36 120 660-93 |
|  | Brushed Dark Platinum | 36 120 660-99 |

Required miscellaneous



Concealed single-lever mixer - 35 020 970 90
 • max. recess depth 105 mm
 • min. recess depth 80 mm

Required miscellaneous



xGRID Installation track 555 mm - 12 360 970 90

Required miscellaneous



Concealed single-lever mixer with backflow preventor - 35 021 970 90
 • max. recess depth 105 mm
 • min. recess depth 80 mm

Recommended miscellaneous



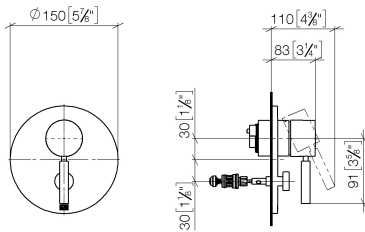
xGRID Attachment set for integrating in the dry wall construction - 12 340 970 90

Concealed single-lever mixer with diverter - Chrome

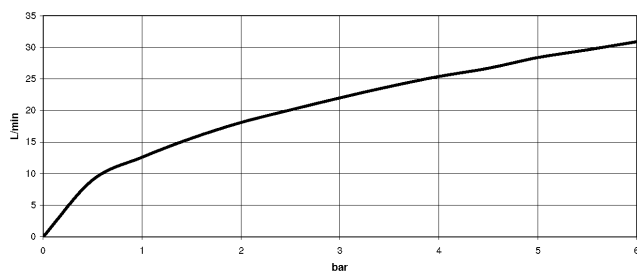
SERIES SPECIFIC

36 120 660 Product version up to 2/20/2020

mm [inches]



Flow rate chart



Codes & Standards

DIN 4109

EN 817

ISO 3822

Scottish Water
Byelaws

UK Water Supply
Regulations

Ü-Zeichen



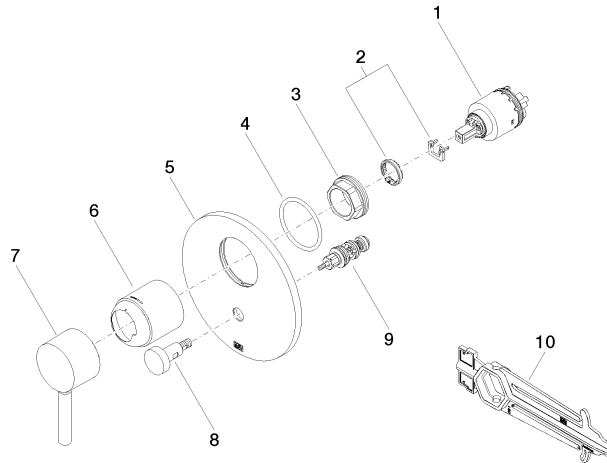
Concealed single-lever mixer with diverter - Chrome

SERIES SPECIFIC

36 120 660 Product version up to 2/20/2020

Certificates and sustainability

| | | |
|---------------------|--------|-----------|
| DVGW_DW- 6512DN0 | LGA_19 | WRAS_2207 |
|---------------------|--------|-----------|



Spare parts list

| No. | Item Number | Name | Quantity used | Delivery time |
|-----|-----------------------|-------------|---------------|---------------|
| | 2 04 28 10 149 00 90 | accessories | 1.00 | 2 |
| | 5 09 11 02 261-00 | plate | 1.00 | 10 |
| | 9 90 21 34 081 00 90 | diverter | 1.00 | 2 |
| | 7 90 20 66 004 00-00 | handle | 1.00 | 10 |
| | 1 90 15 05 038 00 90 | cartridge | 1.00 | 60 |
| | 4 09 14 10 084 90 | seal | 1.00 | 2 |
| | 8 90 31 09 139 00-00 | pull-rod | 1.00 | 10 |
| | 3 09 24 04 448 90 | nut | 1.00 | 2 |
| | 6 09 11 02 260-00 | sleeve | 1.00 | 10 |
| | 10 90 30 09 064 00 90 | key | 1.00 | 2 |