

Concealed single-lever mixer with diverter - Brushed Bronze

SERIES SPECIFIC

36 120 660 Product version from 2/20/2020



- automatic diverter
- cover plate Ø 150 mm
- WRAS

| | | |
|--|--------------------------------|---------------|
| | Brushed Bronze | 36 120 660-42 |
| | Chrome | 36 120 660-00 |
| | Brushed Platinum | 36 120 660-06 |
| | Platinum | 36 120 660-08 |
| | Dark Chrome | 36 120 660-19 |
| | Light Gold | 36 120 660-26 |
| | Brushed Light Gold | 36 120 660-27 |
| | Brushed Durabronze (23kt Gold) | 36 120 660-28 |
| | Matte Black | 36 120 660-33 |
| | Brushed Champagne (22kt Gold) | 36 120 660-46 |
| | Champagne (22kt Gold) | 36 120 660-47 |
| | Brushed Chrome | 36 120 660-93 |
| | Brushed Dark Platinum | 36 120 660-99 |

Required miscellaneous



- Concealed single-lever mixer -** 35 020 970 90
- min. recess depth 80 mm
 - max. recess depth 105 mm

Recommended miscellaneous



- xGRID Attachment set for integrating in the dry wall construction -** 12 340 970 90

Required miscellaneous



- Concealed single-lever mixer with backflow preventor -** 35 021 970 90
- min. recess depth 80 mm
 - max. recess depth 105 mm

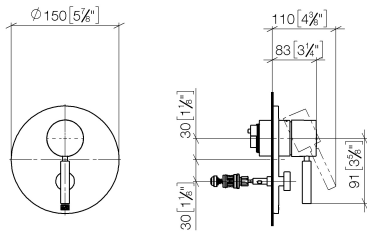
Required miscellaneous



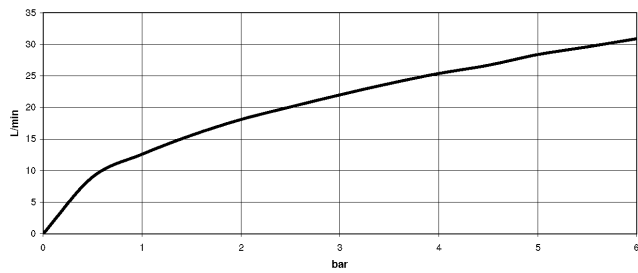
- xGRID Installation track 555 mm -** 12 360 970 90

36 120 660 Product version from 2/20/2020

mm [inches]



Flow rate chart



Codes & Standards

| | | | |
|----------|----------|---------------------------|--------------------------------|
| DIN 4109 | ISO 3822 | Scottish Water Byelaws | UK Water Supply Regulations |
|----------|----------|---------------------------|--------------------------------|

Ü-Zeichen



Concealed single-lever mixer with diverter - Brushed Bronze

SERIES SPECIFIC

36 120 660 Product version from 2/20/2020

Certificates and sustainability

LGA_19 WRAS_2207

