

VAIA Concealed two-way diverter - Brushed Champagne (22kt Gold)
VAIA


36 200 809
Product version from 4/1/2022



- rotary diverter
- rosette Ø 60 mm
- WRAS

	Brushed Champagne (22kt Gold)	36 200 809-46
	Chrome	36 200 809-00
	Brushed Platinum	36 200 809-06
	Dark Chrome	36 200 809-19
	Brushed Durabrass (23kt Gold)	36 200 809-28
	Brushed Dark Brass	36 200 809-39
	Brushed Bronze	36 200 809-42
	Champagne (22kt Gold)	36 200 809-47
	Brushed Dark Platinum	36 200 809-99

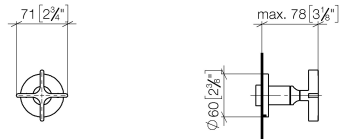
Required miscellaneous



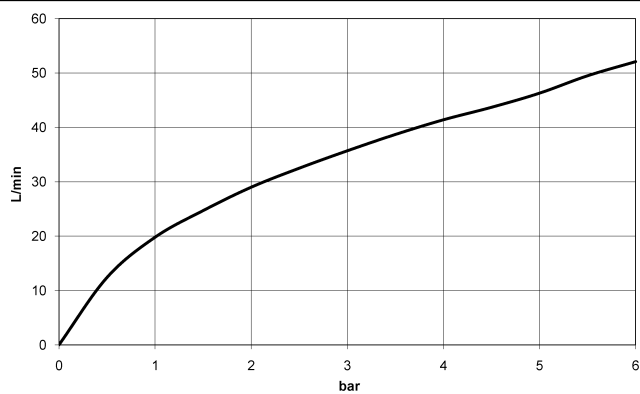
Concealed two-way diverter -
35 202 970 90

- max. recess depth 160 mm
- min. recess depth 85 mm

mm [inches]



Flow rate chart



## Codes & Standards

DIN 4109

ISO 3822

Scottish Water  
Byelaws

UK Water Supply  
Regulations

Ü-Zeichen



## VAIA Concealed two-way diverter - Brushed Champagne (22kt Gold)

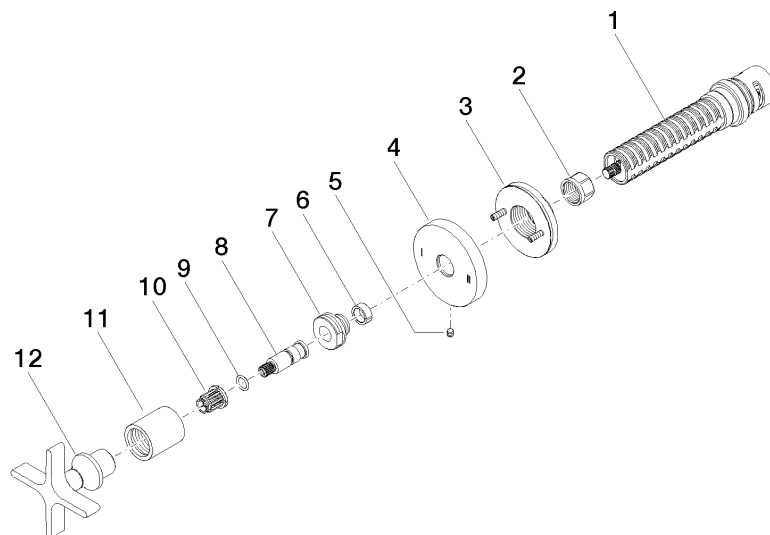
VAIA

36 200 809 Product version from 4/1/2022

Certificates and sustainability

LGA\_38

WRAS\_2307



## Spare parts list

No.	Item Number	Name	Quantity used	Delivery time
3	90 21 02 181 00 90	disc	1.00	2
5	09 31 11 294 90	pin	1.00	2
10	90 12 12 002 00 90	fixing cap	1.00	2
1	90 90 03 304 10 90	diverter	1.00	2
4	09 27 89 118-46	rosette	1.00	30
8	09 29 06 022 90	spindle	1.00	2
7	09 24 05 002 90	nipple	1.00	2
11	09 21 02 070-46	cover	1.00	30
12	90 20 80 014 01-46	handle	1.00	30
2	90 23 30 023 00 90	nut	1.00	2
6	90 14 15 020 03 90	ring	1.00	2
9	90 14 10 060 00 90	seal	1.00	2