

SYMETRICS Concealed two-way diverter - Brushed Platinum

SYMETRICS

36 200 985


Product version from 4/1/2022



- rotary diverter
- rosette 60 x 60 mm
- WRAS

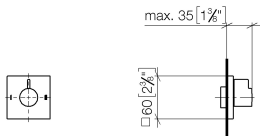
	Brushed Platinum	36 200 985-06
	Chrome	36 200 985-00
	brushed chrome	36 200 985-93
	Dark Chrome	36 200 985-19
	Brushed Light Gold	36 200 985-27
	Brushed Durabrass (23kt Gold)	36 200 985-28
	Matte Black	36 200 985-33
	Brushed Champagne (22kt Gold)	36 200 985-46
	Champagne (22kt Gold)	36 200 985-47
	Brushed Dark Platinum	36 200 985-99

Required miscellaneous

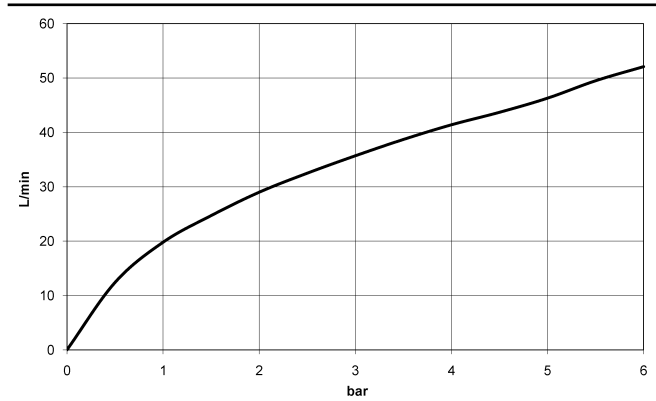
	<div>Concealed two-way diverter -</div> <div> <div>•max. recess depth 160 mm</div> <div>•min. recess depth 85 mm</div> </div>	35 202 970 90
---	---	---------------

36 200 985 Product version from 4/1/2022

mm [inches]



Flow rate chart



Codes & Standards

DIN 4109	ISO 3822	Scottish Water Byelaws	UK Water Supply Regulations
----------	----------	---------------------------	--------------------------------

Ü-Zeichen



SYMETRICS Concealed two-way diverter - Brushed Platinum

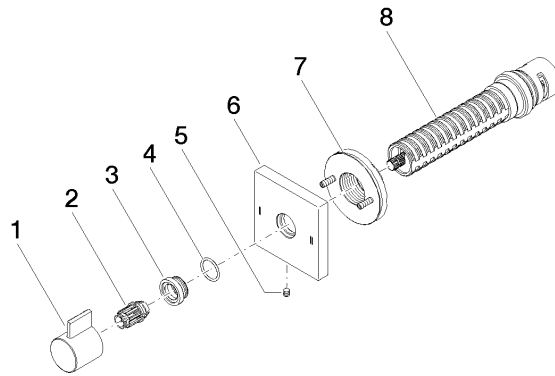
SYMETRICS

36 200 985 Product version from 4/1/2022

Certificates and sustainability

LGA_38

WRAS_2307



Spare parts list

No.	Item Number	Name	Quantity used	Delivery time
	6 09 27 98 037-06	rosette	1.00	10
	4 09 14 10 017 90	seal	1.00	2
	1 09 20 98 002-06	handle	1.00	10
	5 09 31 11 294 90	pin	1.00	2
	8 90 90 03 304 10 90	diverter	1.00	2
	7 90 21 02 181 00 90	disc	1.00	2
	2 09 12 12 005 90	fixing cap	1.00	2
	3 09 12 12 043-06	base	1.00	10