

LULU Concealed thermostat with one function volume control - Brushed Platinum

LULU

36 425 710

Product version up to 8/24/2020

● cover plate 150 x 90 mm

● temperature control handle with safety limit stop at 38°C

● hot water temperature limiter, can be preset

● WRAS

Brushed Platinum

36 425 710-06

Chrome

36 425 710-00

Required miscellaneous

Concealed thermostat with built-in isolators -

●max. recess depth 136 mm

●min. recess depth 80 mm

35 426 970 90

Recommended miscellaneous

xGRID Attachment set for integrating in the dry wall construction -

12 340 970 90

Required miscellaneous

Concealed thermostat -

●max. recess depth 136 mm

●min. recess depth 80 mm

35 425 970 90

Required miscellaneous

xGRID Installation track 555 mm -

12 360 970 90

We reserve the right to change designs, product range and technical specifications without prior notice.

More information can be found at: [www.dornbracht.com](http://www.dornbracht.com) +49 (0) 2371 8899 900 [mail@dornbracht.com](mailto:mail@dornbracht.com)

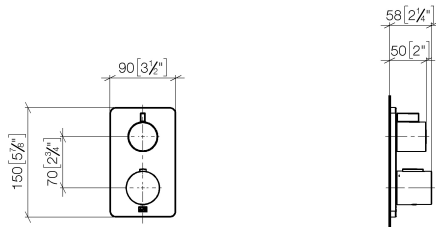
1/5

6/12/2025

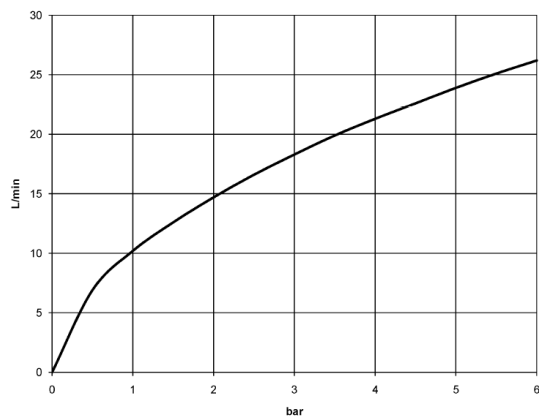
# LULU Concealed thermostat with one function volume control - Brushed Platinum

LULU

36 425 710 Product version up to 8/24/2020  
mm [inches]



## Flow rate chart



## Codes & Standards

DIN 4109

EN 1111

ISO 3822

Scottish Water  
Byelaws

UK Water Supply  
Regulations

Ü-Zeichen

VA-Zeichen



LULU Concealed thermostat with one function volume control - Brushed Platinum

LULU

36 425 710    Product version up to 8/24/2020

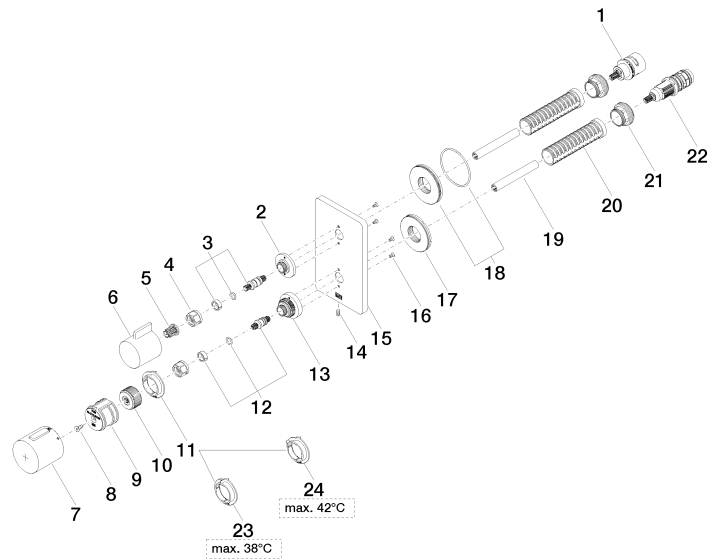
Certificates and sustainability

LGA_19	ETA_20	DVGW_DW-6512DN0	LGA_19	WRAS_250402
--------	--------	-----------------	--------	-------------

# LULU Concealed thermostat with one function volume control - Brushed Platinum

LULU

36 425 710 Product version up to 8/24/2020





## LULU Concealed thermostat with one function volume control - Brushed Platinum

LULU

36 425 710 Product version up to 8/24/2020

### Spare parts list

No.	Item Number	Name	Quantity used	Delivery time
14	09 31 11 134 90	pin	1.00	2
17	09 30 01 296 90	disc	1.00	2
22	90 15 02 013 00 90	cartridge	1.00	2
16	09 30 30 157 90	screw	4.00	2
11	09 28 10 187 90	regulator	1.00	2
21	09 24 04 257 90	nut	2.00	2
23	09 28 10 188 90	regulator	1.00	2
1	90 90 03 166 00 90	top	1.00	2
6	09 20 67 006-06	handle	1.00	10
18	90 30 01 190 00 90	disc	1.00	2
10	09 12 12 054 90	base	1.00	2
24	09 28 10 189 90	regulator	1.00	2
13	09 12 12 051-06	base	1.00	10
5	90 12 12 002 00 90	fixing cap	1.00	2
7	90 17 33 017 00-06	handle	1.00	10
15	09 11 02 246-06	plate	1.00	10
2	09 12 12 053-06	base	1.00	10
20	90 18 40 077 01 90	spindle	2.00	2
12	04 29 06 024 01-00	spindle	1.00	10
4	90 23 30 023 00 90	nut	2.00	2
9	90 12 12 052 00 90	base	1.00	2
3	04 29 06 111 01-00	spindle	1.00	10
8	90 30 30 124 00 90	screw	1.00	2
19	90 23 01 124 00 90	sleeve	2.00	2