

## CYO Wall-mounted basin mixer without pop-up waste - Chrome

CYO





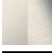


36 707 811



- 160mm projection
- fixed spout
- rectangular, air-enriched flow
- hole diameter valve 37 mm
- hole diameter spout 37 mm
- handle Ø 60mm
- max. flow 4.5 l/min
- lead-free
- This product can help a building meet the requirements of Green Building Rating Systems, e.g. LEED®, BREEAM®, DGNB
- WRAS

**NOTE: The handle inserts must be ordered separately from the fittings!**

NOTE: The handle inserts must be ordered separately from the fittings!

	Chrome	36 707 811-00
	Brushed Platinum	36 707 811-06
	Dark Chrome	36 707 811-19
	Brushed Durabronze (23kt Gold)	36 707 811-28
	Platinum / Brushed Platinum	36 707 811-36
	Durabronze / Brushed Durabronze (23kt Gold)	36 707 811-38
	Brushed Dark Platinum	36 707 811-99

### Required miscellaneous



- Concealed wall-mounted mixer centred spout -** 35 700 970 90
- max. recess depth 145 mm
  - min. recess depth 85 mm

### Required miscellaneous



- Concealed wall-mounted mixer variable positioning -** 35 720 970 90
- min. recess depth 85 mm
  - max. recess depth 145 mm

36 707 811

mm [inches]



Flow rate chart



#### Codes & Standards

ASME A112.18.1	cUPC	DIN 4109	EPA WaterSense
ISO 3822	NSF372	NSF61	Scottish Water Byelaws
UK Water Supply Regulations	Ü-Zeichen	WaterSense	





CYO Wall-mounted basin mixer without pop-up waste - Chrome

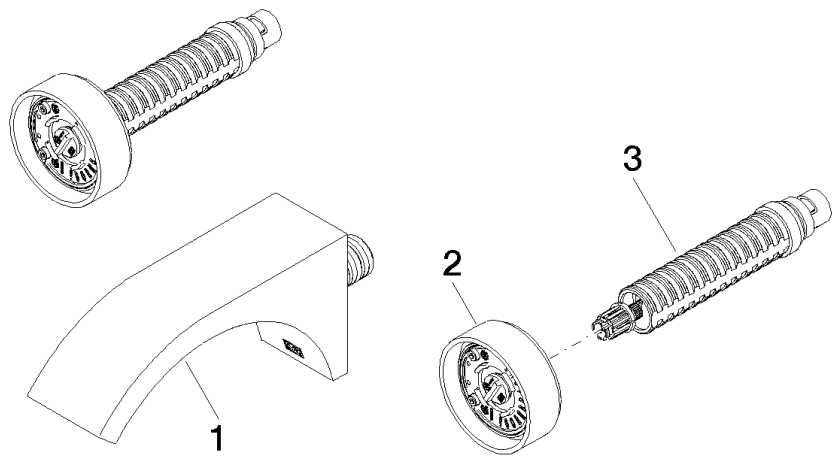
CYO

36 707 811

Certificates and sustainability

WRAS_2111	IAPMO_N-4976	IAPMO_6397	LGA_38	IAPMO_4976 (
IAPMO_8834				

36 707 811



Spare parts list

No.	Item Number	Name	Quantity used	Delivery time
3	90 90 03 171 01 90	top	1.00	2
1	13 800 811-00	CYO Wall-mounted basin spout without pop-up waste - Chrome	1.00	10
2	90 18 40 290 00-00	handle	1.00	10