

36 712 809 Product version from 3/13/2017



- 190mm projection
- fixed spout
- circular, air-enriched flow
- hole diameter valve 37 mm
- hole diameter spout 40 mm
- rosettes Ø 60 mm
- max. flow 5.7 l/min
- lead-free
- This product can help a building meet the requirements of Green Building Rating Systems, e.g. LEED®, BREEAM®, DGNB
- WRAS

|  |                                |               |
|--|--------------------------------|---------------|
|   | Brushed Dark Brass             | 36 712 809-39 |
|   | Chrome                         | 36 712 809-00 |
|   | Brushed Platinum               | 36 712 809-06 |
|   | Platinum                       | 36 712 809-08 |
|   | Dark Chrome                    | 36 712 809-19 |
|   | Brushed Durabronze (23kt Gold) | 36 712 809-28 |
|   | Brushed Bronze                 | 36 712 809-42 |
|   | Brushed Champagne (22kt Gold)  | 36 712 809-46 |
|   | Champagne (22kt Gold)          | 36 712 809-47 |
|  | Brushed Dark Platinum          | 36 712 809-99 |

36 712 809 Product version from 3/13/2017

mm [inches]



Flow rate chart



Trajectory diagram



## Codes & Standards

DIN 4109

ISO 3822

Scottish Water  
Byelaws

UK Water Supply  
Regulations

Ü-Zeichen



## VAIA Wall-mounted basin mixer without pop-up waste - Brushed Dark Brass

---

VAIA

36 712 809 Product version from 3/13/2017

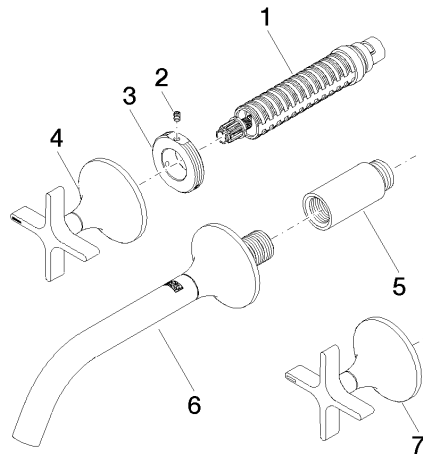
### Certificates and sustainability

---

LGA\_29

WRAS\_2312

Parts for other  
finishes can be found  
here: [Chrome](#)



## Spare parts list

| No. | Item Number        | Name   | Quantity used | Delivery time |
|-----|--------------------|--|---------------|---------------|
| 4   | 90 20 80 011 00-39 | handle ( hot )   | 1.00          | 30            |
| 3   | 09 21 02 163 90    | disc   | 2.00          | 2             |
| 7   | 90 20 80 010 00-39 | handle ( cold )  | 1.00          | 30            |
| 6   | 13 800 809-39      | VAIA Wall-mounted basin spout without pop-up waste -<br>Brushed Dark Brass | 1.00          | 30            |
| 5   | 09 24 03 081 10 90 | extension  | 1.00          | 2             |
| 2   | 09 31 11 008 90    | pin  | 2.00          | 2             |
| 1   | 90 90 03 157 00 90 | top  | 2.00          | 2             |