

MEM Wall-mounted single-lever basin mixer without pop-up waste - Dark Chrome

36 861 782



- 207mm projection
- fixed spout
- rectangular, air-enriched flow
- hole diameter spout 37 mm
- hole diameter single-lever mixer 57 mm
- rosette for spout 80 x 60mm
- rosette for mixer 80 x 80mm
- max. flow 5.7 l/min
- lead-free
- This product can help a building meet the requirements of Green Building Rating Systems, e.g. LEED®, BREEAM®, DGNB
- WRAS

	Dark Chrome	36 861 782-19
	Chrome	36 861 782-00
	Brushed Platinum	36 861 782-06
	Platinum	36 861 782-08
	Brushed Durabrass (23kt Gold)	36 861 782-28
	Brushed Champagne (22kt Gold)	36 861 782-46
	Champagne (22kt Gold)	36 861 782-47
	Brushed Dark Platinum	36 861 782-99

Required miscellaneous



- Concealed wall-mounted single-lever mixer mixer on right -

35 816 970 90
- NOTE:Not suitable for concealed installation.Connection by means of angle valves, mounted with screws to back wall.

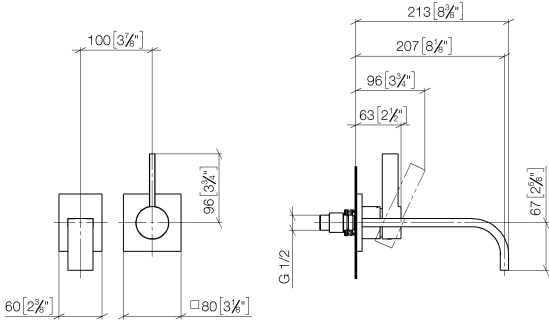


- Concealed wall-mounted single-lever mixer -

35 860 970 90
- min. recess depth mm
 - max. recess depth mm
 - mixer can be placed above, to the left or to the right of the spout.

MEM Wall-mounted single-lever basin mixer without pop-up waste - Dark Chrome

36 861 782
mm [inches]



Flow rate chart



Codes & Standards

DIN 4109	EN 817	ISO 3822	Scottish Water Byelaws
UK Water Supply Regulations	Ü-Zeichen		



MEM Wall-mounted single-lever basin mixer without pop-up waste - Dark
Chrome

36 861 782
Certificates

LGA_29	DVGW_DW- 6512DN0	WRAS_2107
--------	---------------------	-----------

MEM Wall-mounted single-lever basin mixer without pop-up waste - Dark Chrome

36 861 782

