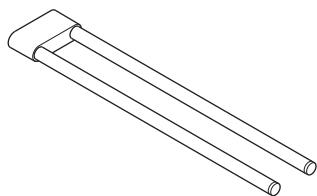
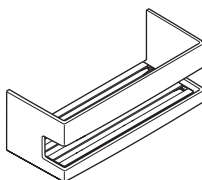


Dornbracht Montageanleitung

Installation instructions



a 83 210 832-FF

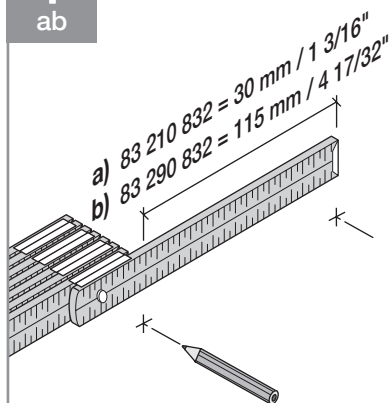


b 83 290 832-FF

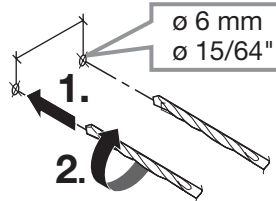


c 83 590 832-FF

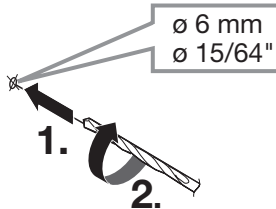
1
ab



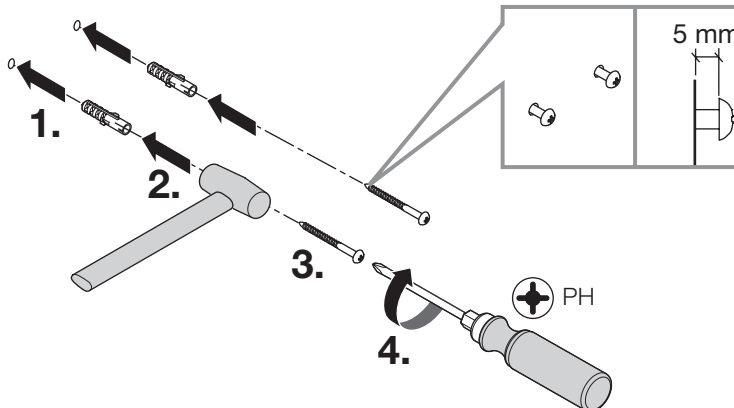
2
ab



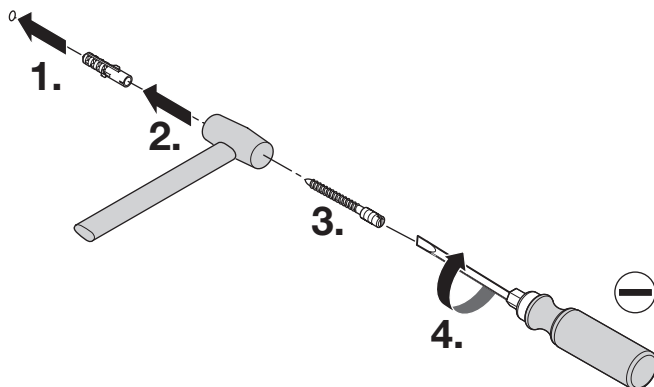
2
c



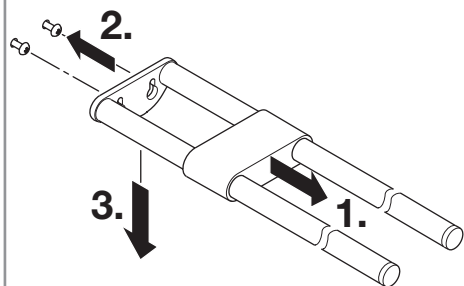
3
ab



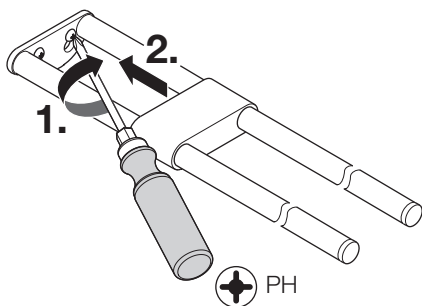
3
c



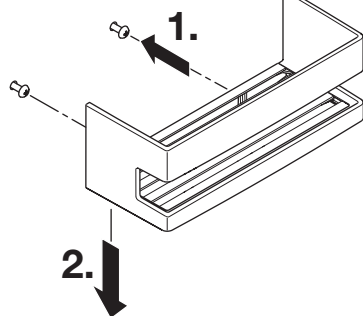
4
a



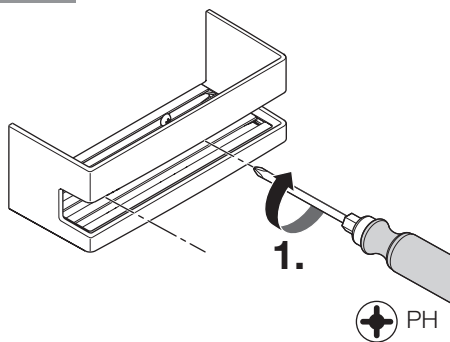
5
a



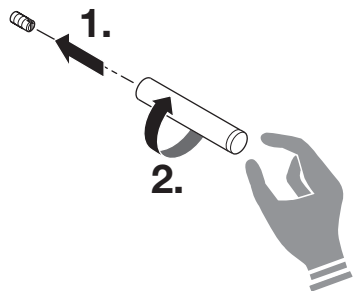
4
b



5
b



4
c



DE ACHTUNG!

Das beigegefügte, universelle Befestigungsmaterial ist nicht für alle Untergründe geeignet. Bitte verwenden Sie nur - für den jeweiligen Untergrund - geeignete Schrauben und Dübel. Bitte prüfen Sie vor Verwendung sorgfältig, ob das beigegefügte Befestigungsmaterial für den vorgesehenen Untergrund tauglich ist.

GB ATTENTION!

The universal fastening accessories supplied with the product are not suitable for all substrates. Please only use screws and plugs that are suitable for the substrate concerned. Therefore, before using the accessories, please carry out a thorough check to ensure that the fastening accessories supplied with the product are suitable for the intended substrate.

Dornbracht AG & Co. KG
Köbbingser Mühle 6, D-58640 Iserlohn
Tel. +49 2371 8899-900
mail@dornbracht.de
www.dornbracht.com



01 03 55 003 00 / 03.2022