

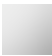





CL.1 Tissue holder without cover - Chrome

CL.1

83 500 705    Product version from 3/9/2015



- width 200mm
- height 35 mm
- 70mm projection

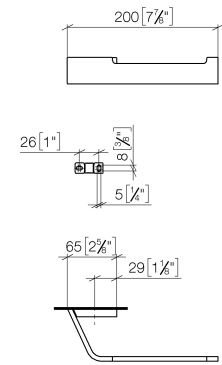
|   |                               |               |
|---|-------------------------------|---------------|
|  | Chrome                        | 83 500 705-00 |
|  | Brushed Platinum              | 83 500 705-06 |
|  | Dark Chrome                   | 83 500 705-19 |
|  | Brushed Champagne (22kt Gold) | 83 500 705-46 |
|  | Champagne (22kt Gold)         | 83 500 705-47 |
|  | Brushed Dark Platinum         | 83 500 705-99 |

# CL.1 Tissue holder without cover - Chrome

CL.1

83 500 705 Product version from 3/9/2015

mm [inches]

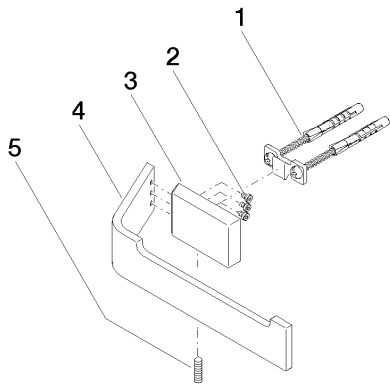


# CL.1 Tissue holder without cover - Chrome

CL.1

83 500 705    Product version from 3/9/2015

Parts for other  
finishes can be found  
here: Brushed  
Platinum



## Spare parts list

| No. | Item Number          | Name       | Quantity used | Delivery time |
|-----|----------------------|------------|---------------|---------------|
|     | 5 04 31 11 113 00 90 | pin        | 1.00          | 2             |
|     | 1 05 17 20 758 00 90 | fixing set | 1.00          | 2             |
|     | 4 08 17 70 553-00    | holder     | 1.00          | 10            |
|     | 2 09 30 30 191 90    | screw      | 3.00          | 2             |
|     | 3 08 17 70 500-00    | holder     | 1.00          | 10            |