

## TARA Tissue holder without cover - Platinum

83 500 892 Product version from 4/1/2024



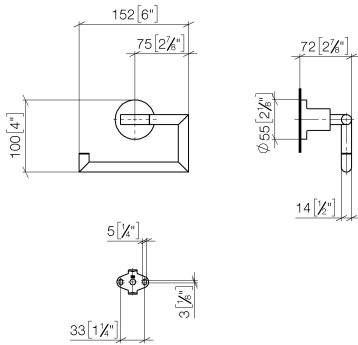
- width 152mm
- height 100 mm
- rosette Ø 55 mm
- 72mm projection

|   |                                     |               |
|---|-------------------------------------|---------------|
|    | Platinum                            | 83 500 892-08 |
|    | Chrome                              | 83 500 892-00 |
|    | Brushed Platinum                    | 83 500 892-06 |
|    | Dark Chrome                         | 83 500 892-19 |
|    | Brushed Durabronze<br>(23kt Gold)   | 83 500 892-28 |
|    | Matte Black                         | 83 500 892-33 |
|    | Brushed Bronze                      | 83 500 892-42 |
|    | Brushed<br>Champagne (22kt<br>Gold) | 83 500 892-46 |
|    | Champagne (22kt<br>Gold)            | 83 500 892-47 |
|   | Brushed Chrome                      | 83 500 892-93 |
|  | Brushed Dark<br>Platinum            | 83 500 892-99 |

## TARA Tissue holder without cover - Platinum

83 500 892 Product version from 4/1/2024

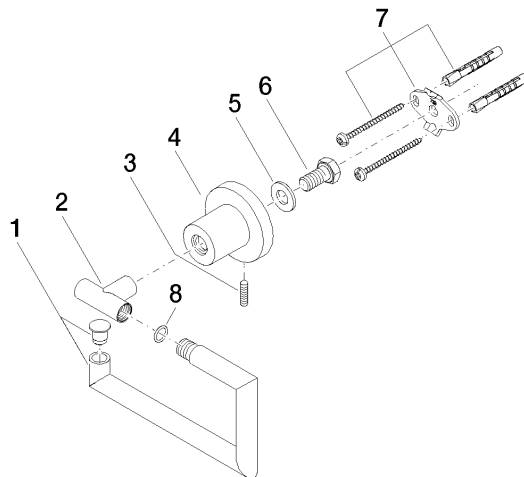
mm [inches]



## TARA Tissue holder without cover - Platinum

83 500 892 Product version from 4/1/2024

Parts for other  
finishes can be found  
here: [Chrome](#)



### Spare parts list

| No.  | Item Number        | Name       | Quantity used | Delivery time |
|--|--------------------|------------|---------------|---------------|
| 1  | 90 28 22 640 00-08 | holder     | 1             | -             |
| Spare part can no longer be ordered, please order the replacement item |                    |            |               |               |
| 2  | 05 17 89 552 00-08 | holder     | 1             | 40            |
| 3  | 04 31 11 113 00 90 | pin        | 1             | 2             |
| 4  | 08 17 89 505-08    | holder     | 1             | 40            |
| 5  | 09 30 11 046 90    | disc       | 1             | 2             |
| 6  | 09 30 30 071 90    | screw      | 1             | 2             |
| 7  | 05 17 20 739 00 90 | fixing set | 1             | 2             |
| 8  | 09 14 10 042 90    | seal       | 1             | 2             |