

TARA Shower pipe with shower thermostat 220 mm - Platinum

TARA

ST 050 302 4892



- shower with fixed riser projection 452mm
- Rain shower: PURE RAIN, max. flow rate 7 l/min (at 3 bar)
- Function from: 6 l/min
- rain shower Ø 220 mm
- rain shower with anti-scale system
- Hand shower: COMPACT RAIN, max. flow rate 15 l/min (at 3 bar)
- rotary diverter with volume control and shut-off function
- slide-on rosettes Ø 70 mm
- height of fittings up to rain shower (bottom edge) 964mm
- height of fittings up to top edge of elbow 1267mm
- gauge 150 mm - 13 mm
- metal shower hose 1750mm with integrated anti-twist protection
- 1/2" connection
- slide bar
- Pipe diameter 23.5 mm

| | | |
|--|--------------------------------|--------------------|
|  | Platinum | ST 050 302 4892-08 |
|  | Chrome | ST 050 302 4892-00 |
|  | Brushed Platinum | ST 050 302 4892-06 |
|  | Dark Chrome | ST 050 302 4892-19 |
|  | Brushed Durabronze (23kt Gold) | ST 050 302 4892-28 |
|  | Matte Black | ST 050 302 4892-33 |
|  | Brushed Bronze | ST 050 302 4892-42 |
|  | Brushed Champagne (22kt Gold) | ST 050 302 4892-46 |
|  | Champagne (22kt Gold) | ST 050 302 4892-47 |
|  | Brushed Chrome | ST 050 302 4892-93 |
|  | Brushed Dark Platinum | ST 050 302 4892-99 |

Individual components of this set

You need the following components for this set

1x 28 015 979-08



1x 34 458 892-08



TARA Shower pipe with shower thermostat 220 mm - Platinum

TARA

ST 050 302 4892



- COMPACT RAIN, max. flow rate 15 l/min (at 3 bar)
- with anti-scale system
- spray head Ø 100mm
- 1/2" connection
- WRAS 2009011

Intrinsic protection against back flow.

Fits: IMO, LULU, MADISON, MEM, TARA,
CL.1, LISSÉ, VAIA, META, CYO

| | | |
|--|-------------------------------------|-------------------|
|  | Platinum | 28 015 979-0 |
|  | Chrome | 28 015 979-0 |
|  | Chrome | 28 015 979-00 001 |
|  | Brushed Platinum | 28 015 979-0 |
|  | Brushed Platinum | 28 015 979-06 001 |
|  | Platinum | 28 015 979-08 001 |
|  | Dark Chrome | 28 015 979-1 |
|  | Dark Chrome | 28 015 979-19 001 |
|  | Light Gold | 28 015 979-26 001 |
|  | Light Gold | 28 015 979-2 |
|  | Brushed Light Gold | 28 015 979-2 |
|  | Brushed Light Gold | 28 015 979-27 001 |
|  | Brushed Durabronze (23kt Gold) | 28 015 979-2 |
|  | Brushed Durabronze (23kt Gold) | 28 015 979-28 001 |
|  | Matte Black | 28 015 979-3 |
|  | Matte Black | 28 015 979-33 001 |
|  | Brushed Bronze | 28 015 979-42 001 |
|  | Brushed Bronze | 28 015 979-4 |
|  | Brushed Champagne (22kt Gold) | 28 015 979-46 001 |
|  | Brushed Champagne (22kt Gold) | 28 015 979-4 |
|  | Champagne (22kt Gold) | 28 015 979-4 |
|  | Champagne (22kt Gold) | 28 015 979-47 001 |
|  | Brushed Chrome | 28 015 979-9 |
|  | Brushed Chrome | 28 015 979-93 001 |
|  | Brushed Dark Platinum | 28 015 979-9 |
|  | Brushed Dark Platinum | 28 015 979-99 001 |



TARA Shower pipe with shower thermostat 220 mm - Platinum

TARA

ST 050 302 4892

8
—
0
—
0
—
6
—
0
—
0
—
9
—
0
—
0
—
6
—
7
—
0
—
8
—
0
—
3
—
0
—
0
—
2
—
0
—
6
—
7
—
0
—
3
—
0
—
9
—
0
—

ST 050 302 4892

mm [inches]



Flow rate chart



Certificates

WRAS_2009

DVGW_DW-
6517DN0

LGA_29

Codes & Standards

| | | | |
|--------------------------------|-----------|----------|---------------------------|
| DIN 4109 | EN 1112 | ISO 3822 | Scottish Water Byelaws |
| UK Water Supply Regulations | Ü-Zeichen | | |

Product version from 4/1/2024

Parts for other
finishes can be found
here: [Chrome](#)





TARA Shower pipe with shower thermostat 220 mm - Platinum

TARA

ST 050 302 4892

Spare parts list

Product version from 4/1/2024

| No. | Item Number | Name | Quantity used | Delivery time |
|-----|-----------------|-------|---------------|---------------|
| | 09 23 01 039 90 | sieve | 1 | 2 |

TARA Shower pipe with shower thermostat 220 mm - Platinum

TARA

ST 050 302 4892



- shower with fixed riser projection 452mm
- Rain shower: PURE RAIN, max. flow rate 7 l/min (at 3 bar)
- Function from: 6 l/min
- rain shower Ø 220 mm
- rain shower with anti-scale system
- rotary diverter with volume control and shut-off function
- slide-on rosettes Ø 70 mm
- height of fittings up to rain shower (bottom edge) 964mm
- height of fittings up to top edge of elbow 1267mm
- gauge 150 mm - 13 mm
- metal shower hose 1750mm with integrated anti-twist protection
- 1/2" connection
- slide bar
- Pipe diameter 23.5 mm
- This product can help a building meet the requirements of Green Building Rating Systems, e.g. LEED®, BREEAM®, DGNB
- WRAS 2204013

This article does not include a hand shower!

Intrinsic protection against back flow.

| | | |
|--|--------------------------------|--------------|
|  | Platinum | 34 458 892-0 |
|  | Chrome | 34 458 892-0 |
|  | Brushed Platinum | 34 458 892-0 |
|  | Dark Chrome | 34 458 892-1 |
|  | Brushed Durabronze (23kt Gold) | 34 458 892-2 |
|  | Matte Black | 34 458 892-3 |
|  | Brushed Bronze | 34 458 892-4 |
|  | Brushed Champagne (22kt Gold) | 34 458 892-4 |
|  | Champagne (22kt Gold) | 34 458 892-4 |
|  | Brushed Chrome | 34 458 892-9 |
|  | Brushed Dark Platinum | 34 458 892-9 |



TARA Shower pipe with shower thermostat 220 mm - Platinum

TARA

ST 050 302 4892


8
—
0
—
6
—
9
—
8
—
3
—
2
—
6
—
7
—
3
—
9
—

TARA Shower pipe with shower thermostat 220 mm - Platinum

TARA

ST 050 302 4892

Required miscellaneous

| | | |
|---|--|--------------------|
|  | Hand shower FlowReduce - Platinum | 28 012 979-08 0010 |
|---|--|--------------------|


Required miscellaneous

| | | |
|---|-------------------------------|---------------|
|  | Hand shower - Platinum | 28 016 979-08 |
|---|-------------------------------|---------------|


Required miscellaneous

| | | |
|---|-------------------------------|---------------|
|  | Hand shower - Platinum | 28 012 979-08 |
|---|-------------------------------|---------------|


Required miscellaneous

| | | |
|---|--|--------------------|
|  | Hand shower FlowReduce - Platinum | 28 016 979-08 0010 |
|---|--|--------------------|

Required miscellaneous

| | | |
|---|--|--------------------|
|  | Hand shower FlowReduce - Platinum | 28 018 979-08 0010 |
|---|--|--------------------|

Required miscellaneous

| | | |
|---|--|--------------------|
|  | SERIES-VARIOUS Hand shower - Platinum | 28 029 979-08 0010 |
|---|--|--------------------|

Required miscellaneous

| | | |
|---|--|---------------|
|  | SERIES-VARIOUS Hand shower - Platinum | 28 029 979-08 |
|---|--|---------------|

Required miscellaneous

| | | |
|---|--|--------------------|
|  | SERIES-VARIOUS Hand shower - Platinum | 28 025 979-08 0010 |
|---|--|--------------------|


Required miscellaneous

| | | |
|---|-------------------------------|---------------|
|  | Hand shower - Platinum | 28 017 979-08 |
|---|-------------------------------|---------------|

Required miscellaneous

| | | |
|---|-------------------------------|---------------|
|  | Hand shower - Platinum | 28 016 979-08 |
|---|-------------------------------|---------------|

Required miscellaneous

| | | |
|---|--|--------------------|
|  | Hand shower FlowReduce - Platinum | 28 016 979-08 0010 |
|---|--|--------------------|

Required miscellaneous

| | | |
|---|-------------------------------|---------------|
|  | Hand shower - Platinum | 28 018 979-08 |
|---|-------------------------------|---------------|

Required miscellaneous

| | | |
|---|--|--------------------|
|  | SERIES-VARIOUS Hand shower - Platinum | 28 029 979-08 0010 |
|---|--|--------------------|

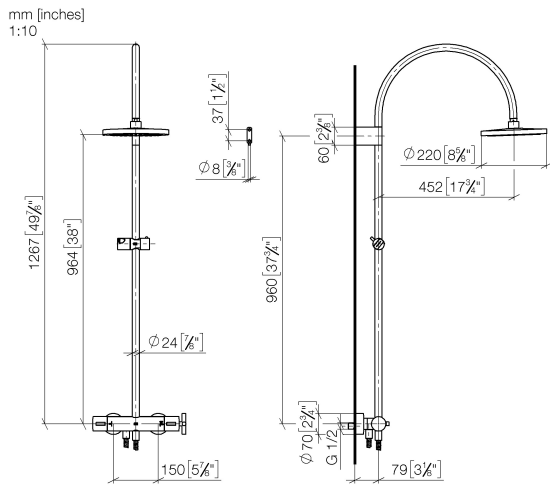
Required miscellaneous

| | | |
|---|--|---------------|
|  | SERIES-VARIOUS Hand shower - Platinum | 28 029 979-08 |
|---|--|---------------|

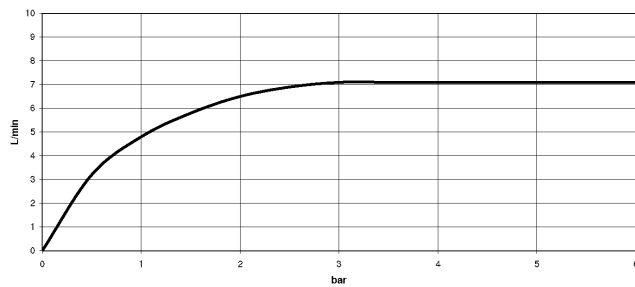
Required miscellaneous

| | | |
|---|--|--------------------|
|  | SERIES-VARIOUS Hand shower - Platinum | 28 027 979-08 0010 |
|---|--|--------------------|

ST 050 302 4892



Flow rate chart



Certificates

WRAS_2204

LGA_38

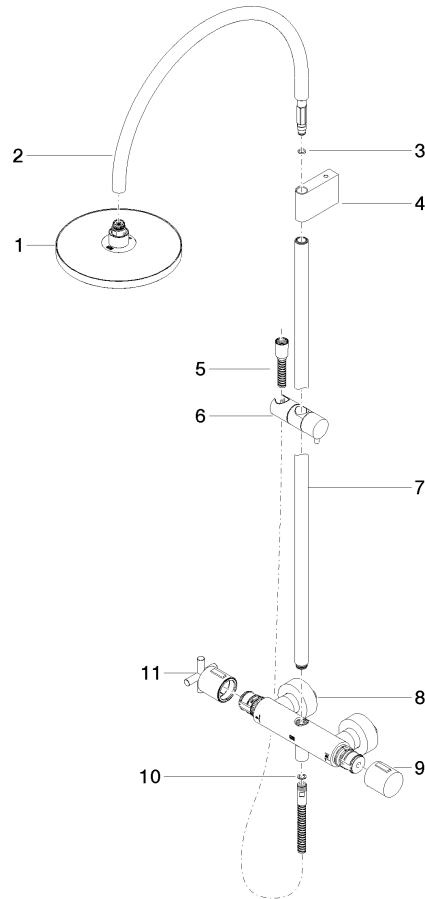
Belgaqua_22_283_2

Codes & Standards

| | | | |
|--------------------------------|-----------|----------|---------------------------|
| DIN 4109 | EN 1717 | ISO 3822 | Scottish Water Byelaws |
| UK Water Supply Regulations | Ü-Zeichen | | |

Product version from 5/1/2022

Parts for other
finishes can be found
here: [Chrome](#)



Spare parts list

Product version from 5/1/2022

| No. | Item Number | Name | Quantity used | Delivery time |
|-----|--------------------|--------|---------------|---------------|
| | 90 12 05 092 20-08 | shower | 11 | 40 |