


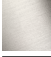


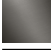


CL.1 Bath spout without diverter for deck mounting - Brushed Champagne (22kt Gold)

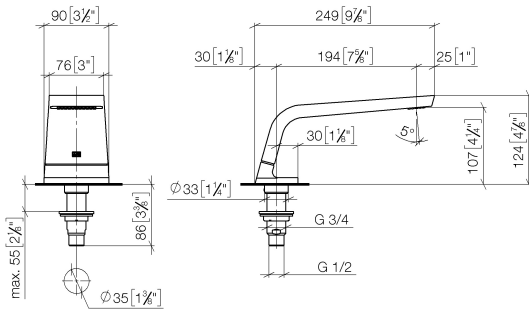
CL.1

<div>13 612 705</div> <div>Product version from 5/27/2021</div> <div>  </div>	<ul style="list-style-type: none"> • 200mm projection • rectangular spray pattern with 55 individual jets • height of mixer 125 mm • height up to aerator 108 mm • hole diameter 35 mm • 1/2" connection • max. flow 24.6 l/min at 3 bar flow pressure • WRAS 	<div>  Brushed Champagne (22kt Gold) </div> <div>13 612 705-46</div>
		<div>  Chrome </div> <div>13 612 705-00</div>
		<div>  Brushed Platinum </div> <div>13 612 705-06</div>
		<div>  Dark Chrome </div> <div>13 612 705-19</div>
		<div>  Champagne (22kt Gold) </div> <div>13 612 705-47</div>
		<div>  Brushed Dark Platinum </div> <div>13 612 705-99</div>

CL.1 Bath spout without diverter for deck mounting - Brushed Champagne (22kt Gold)

CL.1

13 612 705 Product version from 5/27/2021
mm [inches]



Flow rate chart



Codes & Standards

ASME A112.18.1

cUPC

DIN 4109

ISO 3822

Ü-Zeichen



CL.1 Bath spout without diverter for deck mounting - Brushed Champagne (22kt Gold)

CL.1

13 612 705 Product version from 5/27/2021

Certificates and sustainability

LGA_28

IAPMO_4976

CL.1 Bath spout without diverter for deck mounting - Brushed Champagne (22kt Gold)

CL.1

13 612 705 Product version from 5/27/2021

Parts for other
finishes can be found
here: [Chrome](#)



Spare parts list

No.	Item Number	Name	Quantity used	Delivery time
1	90 11 70 007 00-46	spout	1.00	30
3	09 14 10 009 90	seal	1.00	2
4	09 30 01 117 90	connection	1.00	2
5	09 23 01 057 90	flow reducer	1.00	2
6	09 18 40 090 90	sleeve	1.00	2
7	04 23 10 004 03 90	fixing set	1.00	2
2	09 31 11 099 90	pin	1.00	2