

VAIA Bath spout for wall mounting - Brushed Platinum

VAIA

13 801 809



- 200mm projection
- circular normal flow
- hole diameter 37 mm
- rosette Ø 60 mm
- 1/2" connection
- max. flow 21.5 l/min at 3 bar flow pressure
- WRAS 2306002

| | | |
|--|--------------------------------|---------------|
|  | Brushed Platinum | 13 801 809-06 |
|  | Chrome | 13 801 809-00 |
|  | Platinum | 13 801 809-08 |
|  | Dark Chrome | 13 801 809-19 |
|  | Brushed Durabronze (23kt Gold) | 13 801 809-28 |
|  | Brushed Bronze | 13 801 809-42 |
|  | Brushed Champagne (22kt Gold) | 13 801 809-46 |
|  | Champagne (22kt Gold) | 13 801 809-47 |
|  | Brushed Dark Platinum | 13 801 809-99 |

Recommended miscellaneous



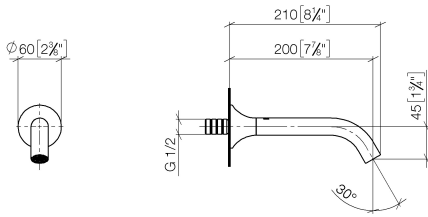
Concealed wall elbow -

35 085 970 90

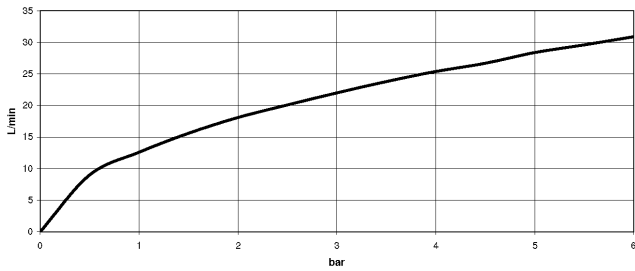
- max. recess depth 163 mm
- min. recess depth 90 mm

13 801 809

mm [inches]



Flow rate chart



Codes & Standards

DIN 4109

ISO 3822

Scottish Water
Byelaws

UK Water Supply
Regulations

Ü-Zeichen



VAIA Bath spout for wall mounting - Brushed Platinum

VAIA

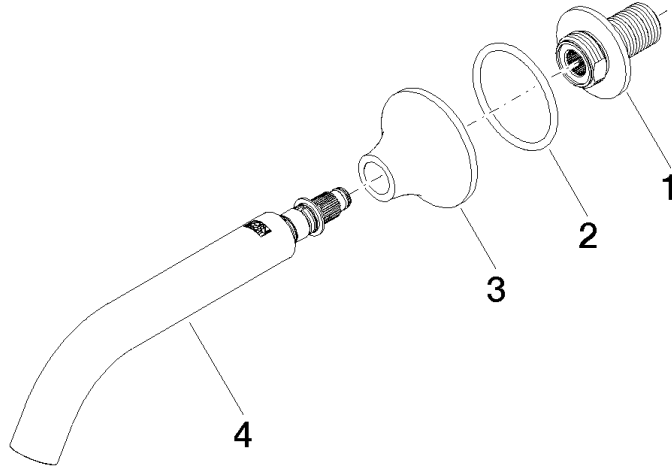
13 801 809

Certificates

WRAS_2306

LGA_29

Product version from 3/13/2017





VAIA Bath spout for wall mounting - Brushed Platinum

VAIA

13 801 809

Spare parts list

Product version from 3/13/2017

| No. | Item Number | Name | Quantity used | Delivery time |
|-----|-----------------|--------|---------------|---------------|
| | 09 24 03 269 90 | nipple | 4 | 2 |