


TARA Deck valve anti-clockwise closing - Platinum

TARA

20 000 883

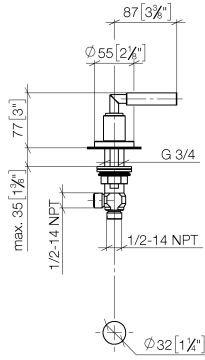


- hole diameter 32 mm
- rosette Ø 55 mm
- WRAS 2112061

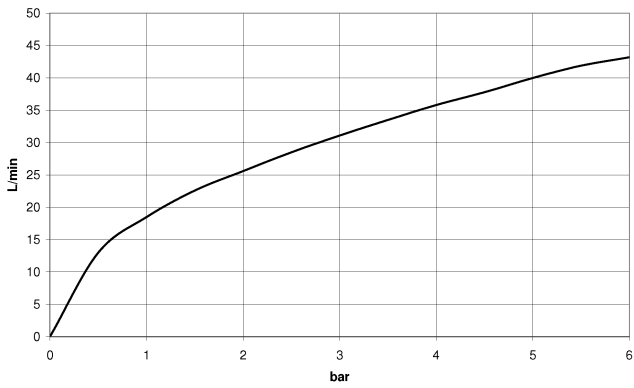
	Platinum	20 000 883-08
	Brushed Bronze	20 000 883-42
	Brushed Champagne (22kt Gold)	20 000 883-46
	Champagne (22kt Gold)	20 000 883-47

20 000 883

mm [inches]



Flow rate chart



Codes & Standards

ASME A112.18.1

cUPC

Scottish Water  
Byelaws

UK Water Supply  
Regulations



## TARA Deck valve anti-clockwise closing - Platinum

---

TARA

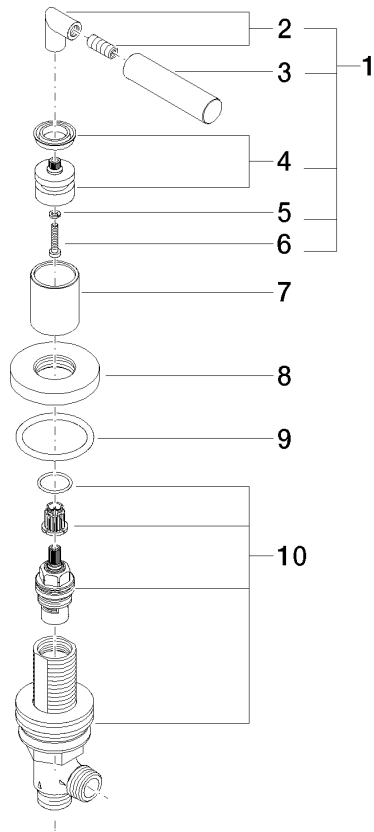
20 000 883

### Certificates

---

IAPMO\_4976

WRAS\_2112





## TARA Deck valve anti-clockwise closing - Platinum

TARA

20 000 883

### Spare parts list

No.	Item Number	Name	Quantity used	Delivery time
	04 20 88 052 00-08	handle	10	40