

## VAIA Three-hole basin mixer with pop-up waste - Dark Chrome

VAIA

20 705 819 Product version from 4/1/2025



- 165mm projection
- pivotable spout 360°
- circular, air-enriched flow
- height of mixer 144 mm
- height up to aerator 90 mm
- hole diameter valve 32 mm
- hole diameter spout 35 mm
- rosette Ø 60 mm
- max. flow 5.7 l/min
- lead-free
- This product can help a building meet the requirements of Green Building Rating Systems, e.g. LEED®, BREEAM®, DGNB
- WRAS

Only suitable for basins with an overflow.

	Dark Chrome	20 705 819-19
	Chrome	20 705 819-00
	Brushed Platinum	20 705 819-06
	Platinum	20 705 819-08
	Brushed Durabronze (23kt Gold)	20 705 819-28
	Brushed Dark Brass	20 705 819-39
	Brushed Bronze	20 705 819-42
	Brushed Champagne (22kt Gold)	20 705 819-46
	Champagne (22kt Gold)	20 705 819-47
	Brushed Dark Platinum	20 705 819-99

### Recommended miscellaneous



#### High pressure hoses -

- 2x 3/8" x 1/2" x 500mm high pressure hose

12 506 970 90

20 705 819 Product version from 4/1/2025

mm [inches]



### Flow rate chart



### Codes & Standards

DIN 4109

Executive Order  
no. 1007

ISO 3822

Scottish Water  
Byelaws

UK Water Supply  
Regulations

Ü-Zeichen



## VAIA Three-hole basin mixer with pop-up waste - Dark Chrome

VAIA

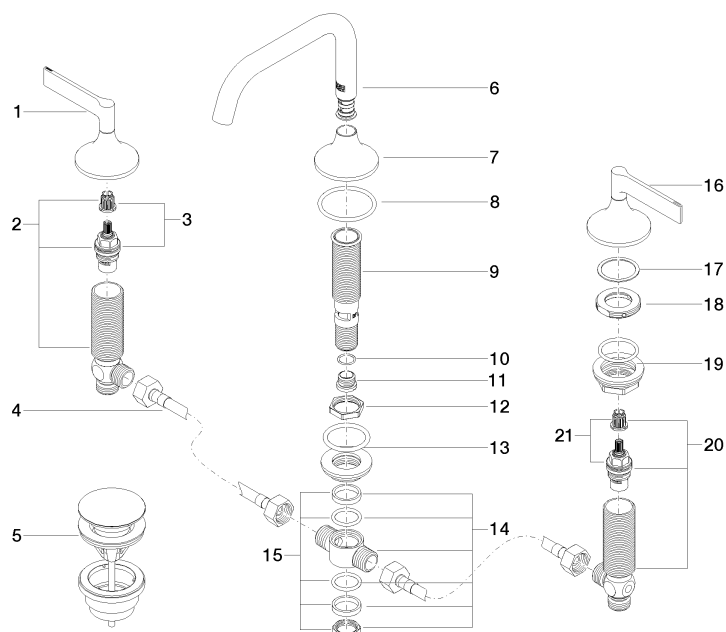
20 705 819 Product version from 4/1/2025

### Certificates and sustainability

GDV\_0400

LGA\_38

WRAS\_2312



## Spare parts list

No.	Item Number	Name	Quantity used	Delivery time
	19 04 23 10 032 78 90	fixing set	2.00	2
	20 04 17 11 055 50 90	side panel	1.00	2
	8 09 14 10 084 90	seal	1.00	2
	4 04 30 04 096 00 90	hose	2.00	2
	11 09 24 04 021 10 90	nipple	1.00	2
	21 90 90 03 150 00 90	top	1.00	2
	7 09 27 80 011-19	rosette	1.00	60
	5 10 125 970-19	Basin Waste with push fastening 1 1/4" - Dark Chrome	1.00	20
	18 09 24 01 028 90	ring	2.00	2
	9 90 30 01 033 00 90	base	1.00	2
	1 90 20 80 013 00-19	handle ( hot )	1.00	20
	12 09 23 10 127 90	nut	1.00	2
	10 09 14 10 017 90	seal	1.00	2
	13 04 23 10 004 04 90	fixing set	1.00	2
	3 90 90 03 151 00 90	top	1.00	2
	16 90 20 80 012 00-19	handle ( cold )	1.00	20
	6 90 28 22 368 00-19	spout	1.00	20
	15 90 23 10 012 00 90	gasket kit	1.00	2
	2 04 17 11 055 51 90	side panel	1.00	2
	17 09 28 10 003 90	ring	2.00	2
	14 90 17 11 020 10 90	distributor	1.00	2