

TARA Three-hole basin mixer with pop-up waste - Brushed Bronze

TARA

20 710 892 Product version from 6/25/2021

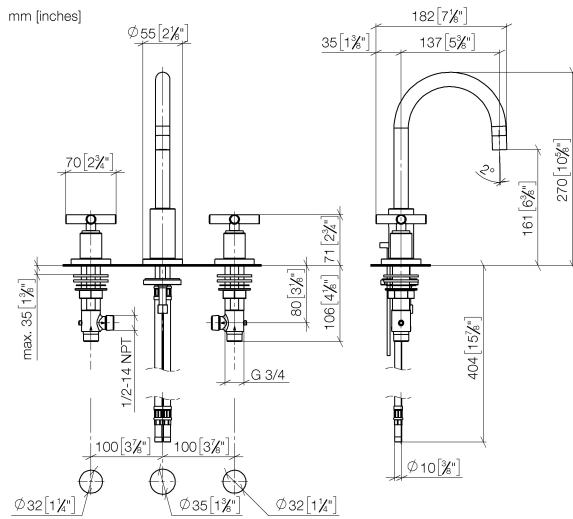


- 135mm projection
- pivotable spout 360°
- circular, air-enriched flow
- height of mixer 270 mm
- height up to aerator 161 mm
- hole diameter valve 32 mm
- hole diameter spout 35 mm
- rosette Ø 55 mm
- 2x screw-in M 10 x 1 pressure hose, leak-tested
- max. flow 7 l/min
- lead-free
- WRAS
- This product can help a building meet the requirements of Green Building Rating Systems, e.g. LEED®, BREEAM®, DGNB

Only suitable for basins with an overflow.

| | | |
|---|--------------------------------|---------------|
|  | Brushed Bronze | 20 710 892-42 |
|  | Chrome | 20 710 892-00 |
|  | Brushed Platinum | 20 710 892-06 |
|  | Platinum | 20 710 892-08 |
|  | Dark Chrome | 20 710 892-19 |
|  | Brushed Durabronze (23kt Gold) | 20 710 892-28 |
|  | Matte Black | 20 710 892-33 |
|  | Brushed Dark Brass | 20 710 892-39 |
|  | Brushed Champagne (22kt Gold) | 20 710 892-46 |
|  | Champagne (22kt Gold) | 20 710 892-47 |
|  | Brushed Chrome | 20 710 892-93 |
|  | Brushed Dark Platinum | 20 710 892-99 |

20 710 892 Product version from 6/25/2021



Flow rate chart



Codes & Standards

| | | | |
|---------------------------|--------------------------------|-----------------------------|------------|
| DIN 4109 | EN 200 | Executive Order no. 1007 | ISO 3822 |
| Scottish Water Byelaws | UK Water Supply Regulations | Ü-Zeichen | VA-Zeichen |



TARA Three-hole basin mixer with pop-up waste - Brushed Bronze

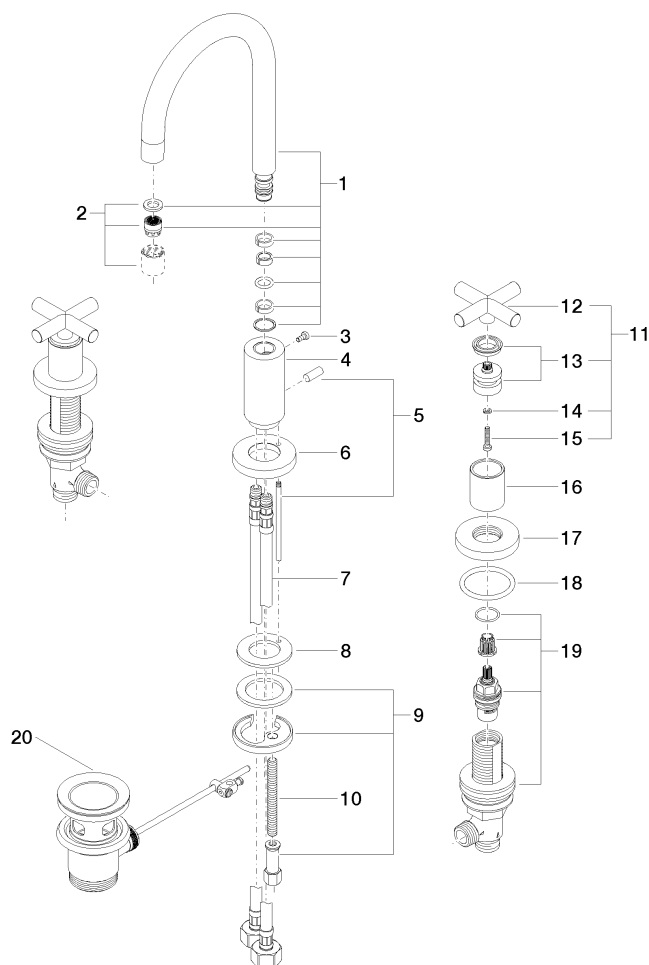
TARA

20 710 892 Product version from 6/25/2021

Certificates and sustainability

| | | | |
|--------|--------|-----------|----------|
| LGA_18 | ETA_18 | WRAS_2212 | GDV_0400 |
|--------|--------|-----------|----------|

Parts for other
finishes can be found
here: [Chrome](#)



Spare parts list

| No. | Item Number | Name | Quantity used | Delivery time |
|-----|--------------------|--------------|---------------|---------------|
| 9 | 04 30 11 038 00 90 | fixing set | 1.00 | 2 |
| 10 | 09 31 11 011 90 | pin | 1.00 | 2 |
| 3 | 09 30 30 057 90 | screw | 1.00 | 2 |
| 15 | 90 30 30 075 00 90 | screw | 2.00 | 2 |
| 20 | 90 11 01 001 00-42 | pop-up waste | 1.00 | 30 |
| 18 | 90 14 10 043 00 90 | seal | 4.00 | 2 |
| 13 | 90 12 12 007 00-42 | base | 2.00 | 30 |
| 14 | 90 30 11 029 00 90 | disc | 2.00 | 2 |
| 12 | 09 20 89 010-42 | handle | 2.00 | 30 |
| 6 | 09 28 10 133-42 | ring | 1.00 | 60 |
| 4 | 09 11 10 087 10-42 | connection | 1.00 | 60 |
| 7 | 04 30 04 019 00 90 | hose | 2.00 | 2 |
| 19 | 90 17 11 040 51 90 | side panel | 2.00 | 2 |
| 2 | 90 23 01 028 03-42 | aerator | 1.00 | 30 |
| 11 | 90 20 89 010 10-42 | handle | 2.00 | 30 |
| 1 | 90 28 22 217 01-42 | spout | 1.00 | 30 |
| 16 | 09 21 02 140-42 | sleeve | 2.00 | 60 |
| 5 | 04 20 89 030 80-42 | pull-rod | 1.00 | 60 |
| 8 | 09 14 05 047 90 | seal | 1.00 | 2 |