

## VAIA Single-hole basin mixer with pop-up waste - Brushed Dark Brass

VAIA

22 513 809 Product version from 4/1/2025

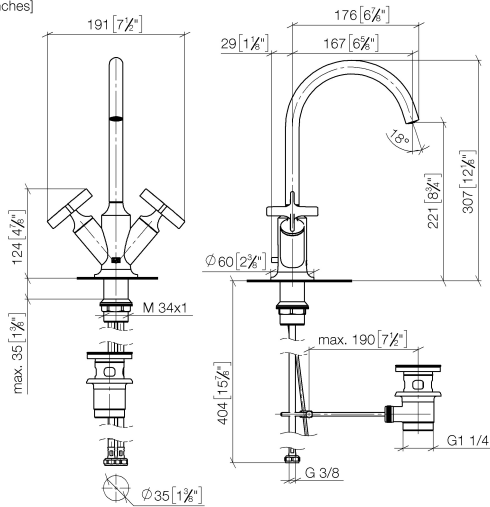


- 167mm projection
- pivotable spout 360°
- circular, air-enriched flow
- height of mixer 307 mm
- height up to aerator 221 mm
- hole diameter 35 mm
- rosette Ø 60 mm
- 2x screw-in M 10 x 1 pressure hose, leak-tested
- max. flow 5.7 l/min
- lead-free
- This product can help a building meet the requirements of Green Building Rating Systems, e.g. LEED®, BREEAM®, DGNB
- WRAS

Only suitable for basins with an overflow.

	Brushed Dark Brass	22 513 809-39
	Chrome	22 513 809-00
	Brushed Platinum	22 513 809-06
	Platinum	22 513 809-08
	Dark Chrome	22 513 809-19
	Brushed Durabronze (23kt Gold)	22 513 809-28
	Brushed Bronze	22 513 809-42
	Brushed Champagne (22kt Gold)	22 513 809-46
	Champagne (22kt Gold)	22 513 809-47
	Brushed Dark Platinum	22 513 809-99

mm [inches]



A line graph showing the relationship between  $L_{\min}$  (y-axis) and  $\bar{\alpha}$  (x-axis). The x-axis ranges from 0 to 6 with major ticks every 1 unit. The y-axis ranges from 0 to 7 with major ticks every 1 unit. The curve starts at (0,0), rises steeply to approximately (1, 4), then more gradually to a peak of about 6 at  $\bar{\alpha} = 3$ . It then dips slightly to about 5.7 at  $\bar{\alpha} = 4$ , and finally rises to about 6.2 at  $\bar{\alpha} = 6$ .

$\bar{\alpha}$	$L_{\min}$
0	0
1	4.0
2	5.3
3	5.9
4	5.7
5	5.9
6	6.2



## VAIA Single-hole basin mixer with pop-up waste - Brushed Dark Brass

---

VAIA

22 513 809 Product version from 4/1/2025

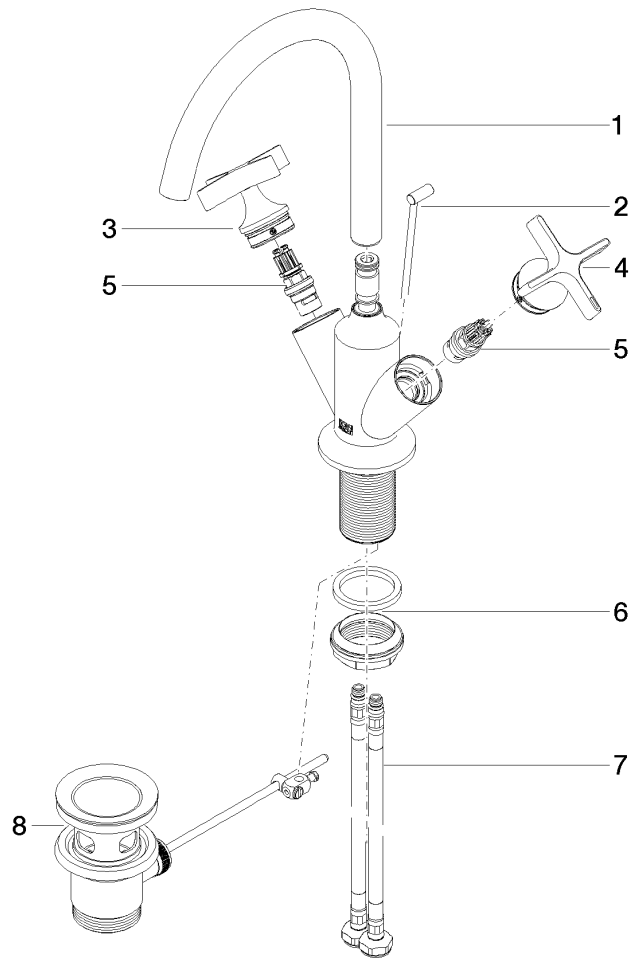
### Certificates and sustainability

---

LGA\_18

WRAS\_240102

Parts for other  
finishes can be found  
here: [Chrome](#)



## Spare parts list

No.	Item Number	Name	Quantity used	Delivery time
6	04 23 10 044 07 90	fixing set	1.00	2
8	90 11 01 001 00-39	pop-up waste	1.00	30
2	04 20 89 035 80-39	pull-rod	1.00	60
3	90 20 66 029 01-39	handle ( hot )	1.00	30
7	04 30 04 100 00 90	hose	2.00	2
1	90 28 22 320 00-39	spout	1.00	30
5	90 90 03 175 00 90	top	2.00	2
4	90 20 66 028 00-39	handle ( cold )	1.00	30