

TARA Single-hole basin mixer with raised base without pop-up waste - Brushed Dark Brass

TARA

22 533 892 Product version from 5/27/2021



- 200mm projection
- pivotable spout 360°
- circular, air-enriched flow
- height of mixer 425 mm
- height up to aerator 280 mm
- hole diameter 35 mm
- rosette Ø 59 mm
- 2x screw-in M 10 x 1 pressure hose, leak-tested
- max. flow 7 l/min
- lead-free
- This product can help a building meet the requirements of Green Building Rating Systems, e.g. LEED®, BREEAM®, DGNB
- WRAS

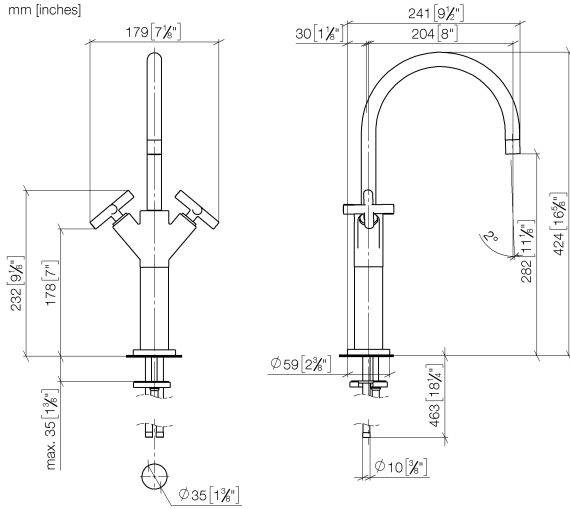
for use on countertop bowls

	Brushed Dark Brass	22 533 892-39
	Chrome	22 533 892-00
	Brushed Platinum	22 533 892-06
	Platinum	22 533 892-08
	Dark Chrome	22 533 892-19
	Brushed Durabronze (23kt Gold)	22 533 892-28
	Matte Black	22 533 892-33
	Brushed Bronze	22 533 892-42
	Brushed Champagne (22kt Gold)	22 533 892-46
	Champagne (22kt Gold)	22 533 892-47
	Brushed Chrome	22 533 892-93
	Brushed Dark Platinum	22 533 892-99

TARA Single-hole basin mixer with raised base without pop-up waste - Brushed Dark Brass

TARA

22 533 892 Product version from 5/27/2021
mm [inches]



Flow rate chart



Codes & Standards

DIN 4109	EN 200	Executive Order no. 1007	ISO 3822
Scottish Water Byelaws	UK Water Supply Regulations	Ü-Zeichen	VA-Zeichen



TARA Single-hole basin mixer with raised base without pop-up waste - Brushed
Dark Brass

TARA

22 533 892 Product version from 5/27/2021

Certificates and sustainability

ETA_18	LGA_18	GDV_0400	WRAS_240702
--------	--------	----------	-------------

TARA Single-hole basin mixer with raised base without pop-up waste - Brushed Dark Brass

TARA

22 533 892 Product version from 5/27/2021

Parts for other
finishes can be found
here: [Chrome](#)



Spare parts list

No.	Item Number	Name	Quantity used	Delivery time
12	09 14 10 134 90	seal	1.00	2
5	90 30 11 029 00 90	disc	2.00	2
1	90 28 22 214 01-39	spout	1.00	30
4	90 12 12 007 00-39	base	2.00	30
6	90 30 30 075 00 90	screw	2.00	2
7	90 90 03 151 00 90	top	2.00	2
10	04 30 04 105 00 90	hose	2.00	2
14	09 31 11 000 90	pin	1.00	2
11	09 28 10 132-39	ring	1.00	60
13	04 30 11 038 00 90	fixing set	1.00	2
8	09 30 30 054 90	screw	1.00	2
3	09 20 89 010-39	handle	2.00	60
2	90 20 89 010 10-39	handle	2.00	30
9	09 18 40 063-39	sleeve	1.00	60