








## IMO Single-lever bath mixer with stand pipe for free-standing assembly with hand shower set - Chrome

IMO

25 863 671



- 279mm projection
- spout: cascade
- Hand shower: COMPACT RAIN, max. flow rate 6.8 l/min (at 3 bar)
- bar-type hand shower with anti-scale system
- wall bracket
- automatic bath/shower diverter
- total height 943 - 1013 mm
- stand pipe height 548 - 618 mm
- height up to aerator 891 – 961 mm
- metal shower hose 1250mm with integrated anti-twist protection
- max. flow for complete hand shower set 6.8 l/min
- slide-on rosettes Ø 135 mm

|   |                       |               |
|---|-----------------------|---------------|
|  | Chrome                | 25 863 671-00 |
|  | Brushed Platinum      | 25 863 671-06 |
|  | Dark Chrome           | 25 863 671-19 |
|  | Brushed Light Gold    | 25 863 671-27 |
|  | Matte Black           | 25 863 671-33 |
|  | Brushed Chrome        | 25 863 671-93 |
|  | Brushed Dark Platinum | 25 863 671-99 |

### Required miscellaneous



#### **Concealed floor mounting -**

- min. recess depth 80 mm
- max. recess depth 150 mm

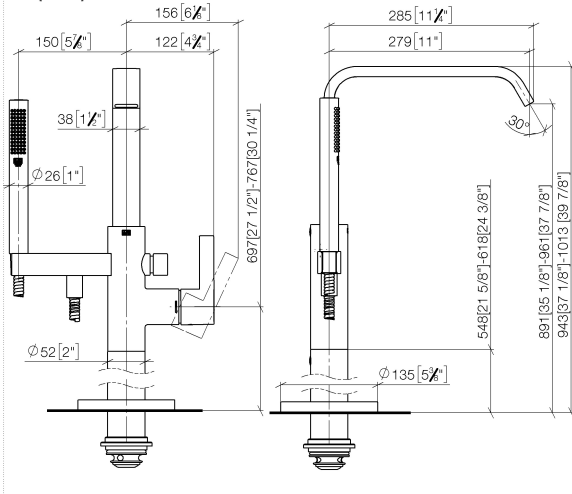
35 945 970 90

# IMO Single-lever bath mixer with stand pipe for free-standing assembly with hand shower set - Chrome

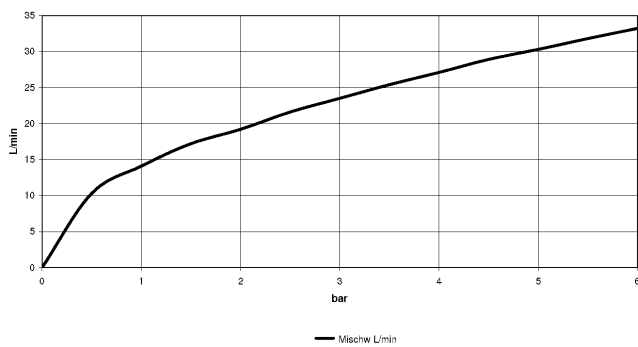
IMO

25 863 671

mm [inches]



## Flow rate chart



## Codes & Standards

ASME A112.18.1

cUPC

DIN 4109

ISO 3822

Scottish Water  
Byelaws

UK Water Supply  
Regulations

Ü-Zeichen



IMO Single-lever bath mixer with stand pipe for free-standing assembly with hand shower set - Chrome

IMO

25 863 671

Certificates and sustainability

LGA\_38

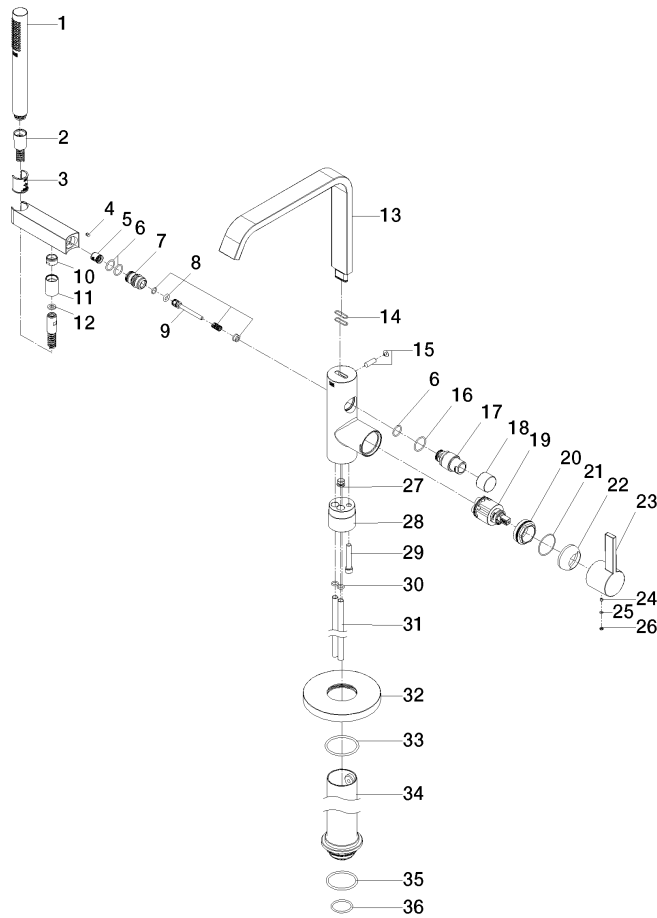
WRAS\_250302

IAPMO\_4976 (

# IMO Single-lever bath mixer with stand pipe for free-standing assembly with hand shower set - Chrome

IMO

25 863 671



# IMO Single-lever bath mixer with stand pipe for free-standing assembly with hand shower set - Chrome

IMO

25 863 671

## Spare parts list

| No. | Item Number        | Name   | Quantity used | Delivery time |
|-----|--------------------|--|---------------|---------------|
| 5   | 90 23 01 141 00 90 | back-flow preventer                              | 1.00          | 2             |
| 9   | 09 31 09 102 20-00 | pull-rod   | 1.00          | 10            |
| 27  | 04 31 20 039 11 90 | plug   | 1.00          | 2             |
| 16  | 09 14 10 112 90    | seal   | 1.00          | 2             |
| 36  | 09 14 10 018 90    | seal   | 1.00          | 2             |
| 14  | 09 14 10 096 90    | seal   | 2.00          | 2             |
| 17  | 09 21 34 081 20-00 | nipple   | 1.00          | 10            |
| 34  | 04 28 22 030 00-00 | pipe   | 1.00          | 10            |
| 20  | 09 24 04 298 90    | nut  | 1.00          | 2             |
| 35  | 09 14 10 084 90    | seal   | 1.00          | 2             |
| 11  | 90 21 02 069 00-00 | cover  | 1.00          | 10            |
| 6   | 90 14 10 010 00 90 | seal   | 3.00          | 2             |
| 8   | 90 16 02 023 00 90 | spring   | 1.00          | 2             |
| 19  | 90 15 05 039 00 90 | cartridge  | 1.00          | 2             |
| 2   | 90 30 02 072 00-00 | Metal shower hose 1/2" x 3/8" x 1250 mm - Chrome | 1.00          | 10            |
| 28  | 09 24 03 152 20-00 | adaptor  | 1.00          | 10            |
| 31  | 04 28 22 025 00 90 | connection                                       | 2.00          | 2             |
| 29  | 09 30 30 111 90    | screw  | 1.00          | 2             |
| 3   | 09 18 40 118 90    | sleeve   | 1.00          | 2             |
| 26  | 09 31 20 087-00    | plug   | 1.00          | 10            |
| 15  | 04 31 20 036 00 90 | plug   | 1.00          | 2             |
| 18  | 09 20 88 002-00    | handle   | 1.00          | 10            |
| 32  | 09 27 88 007-00    | rosette  | 1.00          | 10            |
| 23  | 09 20 67 014-00    | handle   | 1.00          | 10            |
| 33  | 90 14 10 129 00 90 | seal   | 1.00          | 2             |
| 30  | 09 14 10 139 90    | seal   | 4.00          | 2             |
| 25  | 09 14 10 133 90    | seal   | 1.00          | 2             |
| 4   | 09 31 11 058 90    | pin  | 1.00          | 2             |
| 22  | 09 28 30 036-00    | cover  | 1.00          | 10            |
| 24  | 90 31 11 030 00 90 | pin  | 1.00          | 2             |
| 21  | 09 14 10 190 90    | seal   | 1.00          | 2             |
| 12  | 09 14 03 066 90    | seal   | 1.00          | 2             |
| 1   | 90 12 11 140 41-00 | shower   | 1.00          | 10            |
| 10  | 09 24 03 069 90    | nipple   | 1.00          | 2             |
| 13  | 90 28 22 408 00-00 | spout  | 1.00          | 10            |
| 7   | 09 24 03 153 20-00 | nipple   | 1.00          | 10            |