







CL.1 Single-lever bath mixer with stand pipe for free-standing assembly with hand shower set - Chrome

CL.1

25 863 705



- 238mm projection
- rectangular spray pattern with 55 individual jets
- max. spout flow rate 24.6 l/min
- Hand shower: COMPACT RAIN, max. flow rate 6.8 l/min (at 3 bar)
- bar-type hand shower with anti-scale system
- wall bracket
- automatic bath/shower diverter
- total height 935 - 1005 mm
- stand pipe height 598 - 668 mm
- height up to aerator 852 – 922 mm
- push-on rosette 131 x 131 mm
- metal shower hose 1250mm with integrated anti-twist protection

	Chrome	25 863 705-00
	Brushed Platinum	25 863 705-06
	Dark Chrome	25 863 705-19
	Brushed Champagne (22kt Gold)	25 863 705-46
	Champagne (22kt Gold)	25 863 705-47
	Brushed Dark Platinum	25 863 705-99

Required miscellaneous



- Concealed floor mounting -**
- max. recess depth 150 mm
 - min. recess depth 80 mm

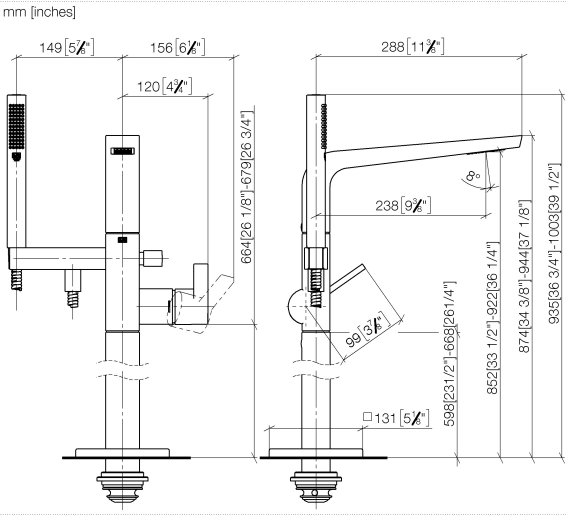
35 945 970 90

CL.1 Single-lever bath mixer with stand pipe for free-standing assembly with hand shower set - Chrome

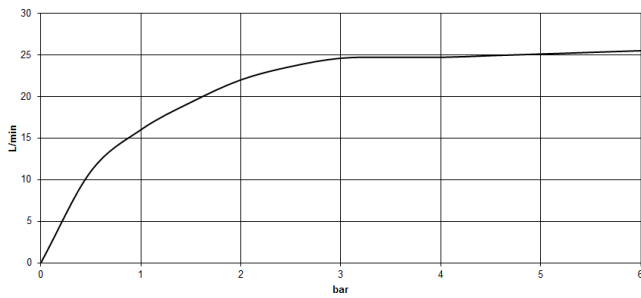
CL.1

25 863 705

mm [inches]



Flow rate chart



Codes & Standards

ASME A112.18.1

cUPC

DIN 4109

EN 1717

ISO 3822

Ü-Zeichen



CL.1 Single-lever bath mixer with stand pipe for free-standing assembly with hand shower set - Chrome

CL.1

25 863 705

Certificates

IAPMO_4976

Belgaqua_19_77

LGA_29

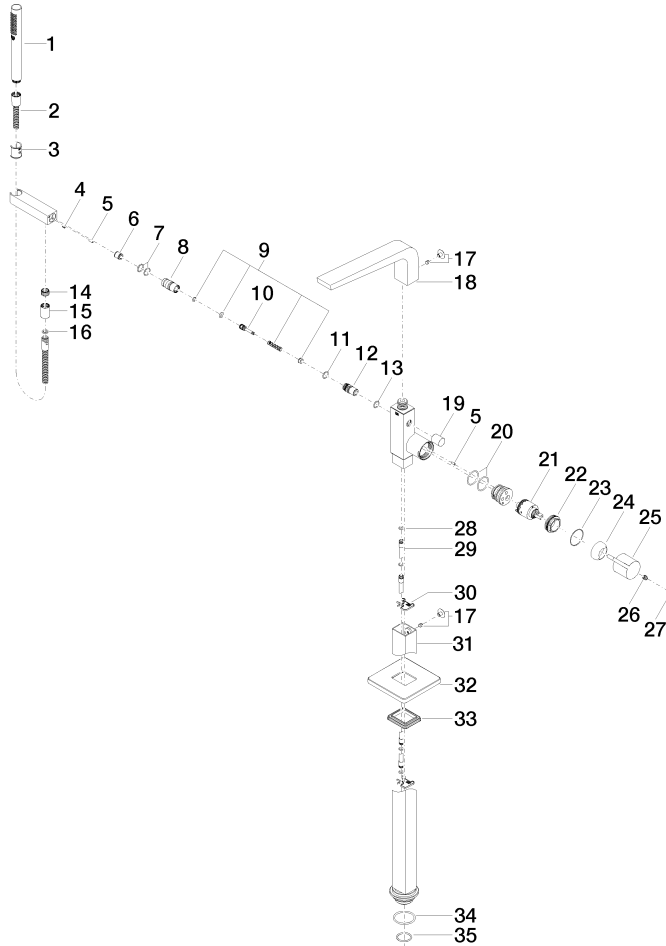
Belgaqua_24-003-2

CL.1 Single-lever bath mixer with stand pipe for free-standing assembly with hand shower set - Chrome

CL.1

25 863 705

Product version from 7/1/2023





CL.1 Single-lever bath mixer with stand pipe for free-standing assembly with hand shower set - Chrome

CL.1

25 863 705

Spare parts list

Product version from 7/1/2023

No.	Item Number	Name	Quantity used	Delivery time
	90 12 11 140 30-00	shower	43	10