

MADISON Bath shower set for bath rim or tile edge installation - Brushed Durabron (23kt Gold)



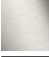


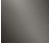
MADISON

27 502 360



- spout: circular, air-enriched flow
- max. spout flow rate 23 l/min
- Hand shower: COMPACT RAIN, max. flow rate 6.8 l/min (at 3 bar)
- complete hand shower set with anti-scale system
- 225mm projection
- automatic bath/shower diverter
- height of mixer 185 mm
- height up to aerator 140 mm
- hole diameter valve 32 mm
- hole diameter spout 32 mm
- hole diameter for complete hand shower set 32 mm
- rosette for complete hand shower set Ø 55mm
- rosette for deck valve Ø 55mm
- metal shower hose 1750mm with integrated anti-twist protection

Intrinsic protection against back flow.

| | | |
|--|------------------------------|---------------|
|  | Brushed Durabron (23kt Gold) | 27 502 360-28 |
|  | Chrome | 27 502 360-00 |
|  | Brushed Platinum | 27 502 360-06 |
|  | Platinum | 27 502 360-08 |
|  | Durabron (23kt Gold) | 27 502 360-09 |
|  | Brushed Dark Platinum | 27 502 360-99 |

Recommended miscellaneous



Perfecto installation kit - 12 614 970 90

Recommended miscellaneous

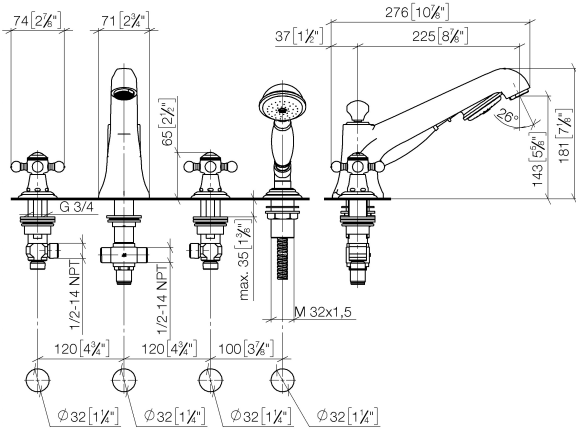


Decorative caps for Perfecto - Brushed Durabron (23kt Gold) 12 801 970-28
• 1 pair

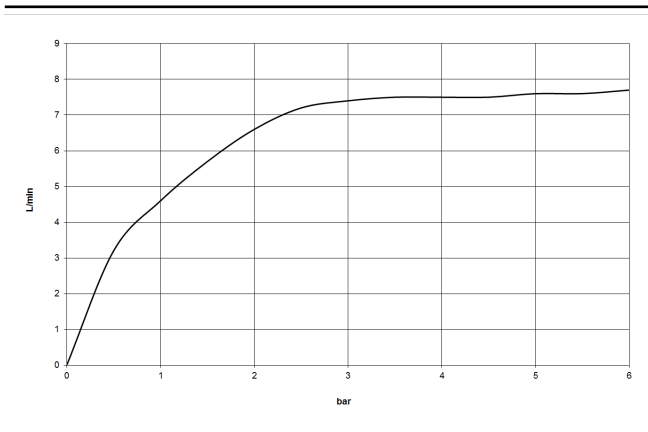
MADISON Bath shower set for bath rim or tile edge installation - Brushed Durabronz (23kt Gold)

MADISON

27 502 360
mm [inches]



Flow rate chart



Codes & Standards

DIN 4109

EN 1717

ISO 3822

Ü-Zeichen



MADISON Bath shower set for bath rim or tile edge installation - Brushed
Durabronz (23kt Gold)

MADISON

27 502 360

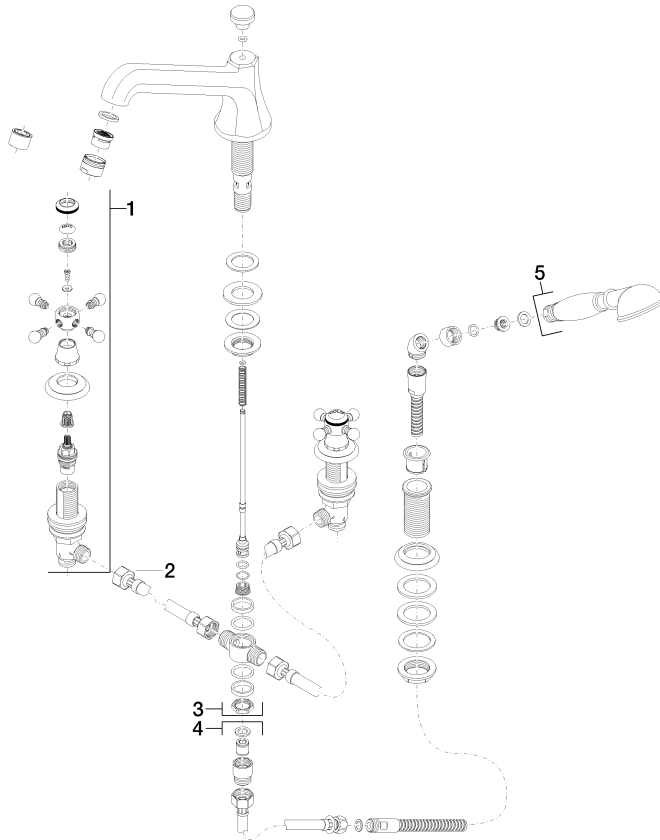
Certificates

LGA_8

Belgaqua_21-380-2

27 502 360

Product version from 7/31/2009





MADISON Bath shower set for bath rim or tile edge installation - Brushed
Durabronze (23kt Gold)

MADISON

27 502 360

Spare parts list

Product version from 7/31/2009