

MADISON Rain shower with ceiling fixing 200 mm - Durabrand (23kt Gold)

MADISON




28 565 977 Product version up to 12/5/2019




- rain shower Ø 200 mm
- PURE RAIN, max. flow rate 14 l/min (at 3 bar)
- Function from: 8 l/min
- with anti-scale system

Technical data:

- distance between ceiling and lower edge of the shower 185mm
- rosette Ø 55 mm
- 1/2" connection

| | | |
|---|-------------------------------|---------------|
|  | Durabrand (23kt Gold) | 28 565 977-09 |
|  | Chrome | 28 565 977-00 |
|  | Brushed Platinum | 28 565 977-06 |
|  | Platinum | 28 565 977-08 |
|  | Brushed Durabrand (23kt Gold) | 28 565 977-28 |
|  | Brushed Dark Brass | 28 565 977-39 |
|  | Brushed Dark Platinum | 28 565 977-99 |

Recommended miscellaneous

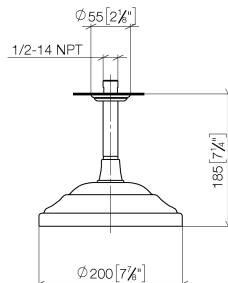
- 

Concealed wall elbow -

 - max. recess depth 163 mm
 - min. recess depth 90 mm

35 085 970 90

mm [inches]



Flow rate chart



Codes & Standards

DIN 4109

EN 1112

ISO 3822

Scottish Water
Byelaws

UK Water Supply
Regulations

Ü-Zeichen



MADISON Rain shower with ceiling fixing 200 mm - Durabrand (23kt Gold)

MADISON

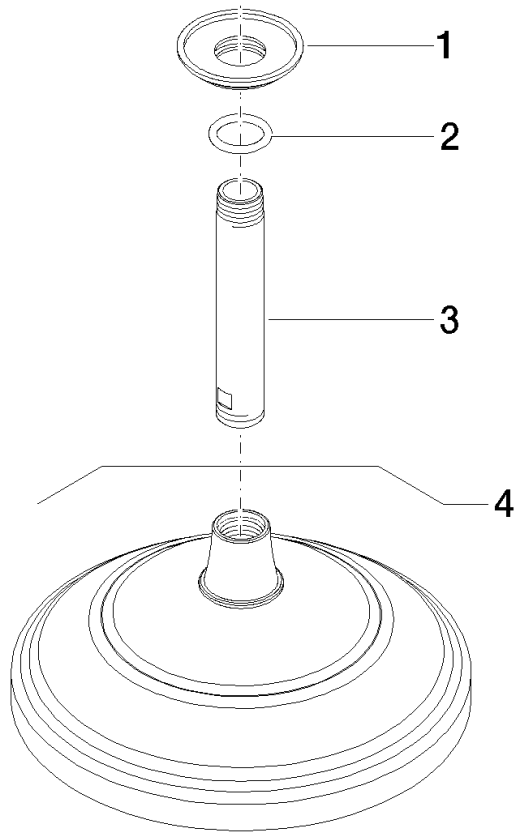
28 565 977 Product version up to 12/5/2019

Certificates and sustainability

DVGW_DW-
6517DN0

LGA_38

WRAS_250102



Spare parts list

| No. | Item Number | Name | Quantity used | Delivery time |
|-----|--------------------|------------|---------------|---------------|
| 3 | 09 11 03 018-09 | connection | 1.00 | 40 |
| 1 | 09 27 35 003-09 | rosette | 1.00 | 40 |
| 2 | 90 14 10 026 00 90 | seal | 2.00 | 2 |