

Two-way diverter for bath rim or tile edge installation - Champagne (22kt Gold) SERIES SPECIFIC

29 140 979 Product version from 6/30/2015

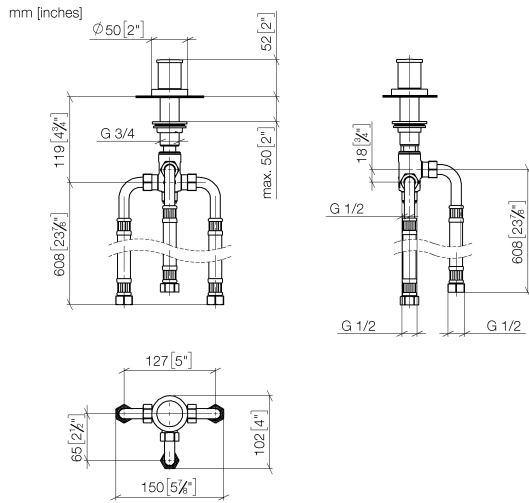


- automatic bath/shower diverter
- hole diameter 32 mm
- rosette Ø 50 mm
- 1/2" connection
- max. flow 64.9 l/min at 3 bar flow pressure
- WRAS

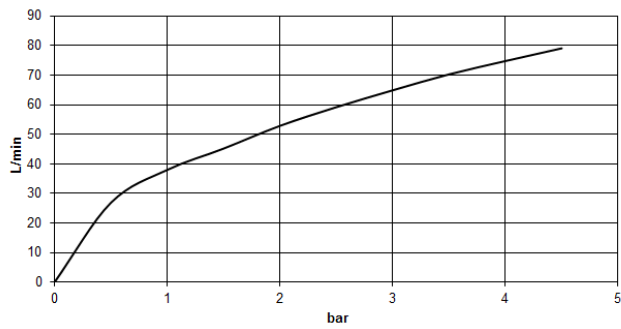
| | | |
|---|--------------------------------|---------------|
|  | Champagne (22kt Gold) | 29 140 979-47 |
|  | Chrome | 29 140 979-00 |
|  | Brushed Platinum | 29 140 979-06 |
|  | Platinum | 29 140 979-08 |
|  | Dark Chrome | 29 140 979-19 |
|  | Brushed Durabronze (23kt Gold) | 29 140 979-28 |
|  | Matte Black | 29 140 979-33 |
|  | Brushed Dark Brass | 29 140 979-39 |
|  | Brushed Bronze | 29 140 979-42 |
|  | Brushed Champagne (22kt Gold) | 29 140 979-46 |
|  | Brushed Chrome | 29 140 979-93 |
|  | Brushed Dark Platinum | 29 140 979-99 |

Two-way diverter for bath rim or tile edge installation - Champagne (22kt Gold) SERIES SPECIFIC

29 140 979 Product version from 6/30/2015



Flow rate chart



Codes & Standards

DIN 4109

ISO 3822

Ü-Zeichen



Two-way diverter for bath rim or tile edge installation - Champagne (22kt Gold) SERIES SPECIFIC

29 140 979 Product version from 6/30/2015

Certificates and sustainability

LGA_29

