

IMO Single-lever bath mixer for wall mounting without shower set - Brushed Chrome




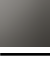

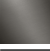
IMO

33 200 671
Product version from 4/1/2024



- 190mm projection
- rectangular normal flow
- automatic bath/shower diverter
- 3/8" shower outlet
- slide-on rosettes Ø 60 mm
- 1/2" connection
- gauge 150 mm - 15 mm
- max. flow 16.7 l/min at 3 bar flow pressure

Intrinsic protection against back flow.

|   |                       |               |
|---|-----------------------|---------------|
|  | Brushed Chrome        | 33 200 671-93 |
|  | Chrome                | 33 200 671-00 |
|  | Brushed Platinum      | 33 200 671-06 |
|  | Dark Chrome           | 33 200 671-19 |
|  | Matte Black           | 33 200 671-33 |
|  | Brushed Dark Platinum | 33 200 671-99 |

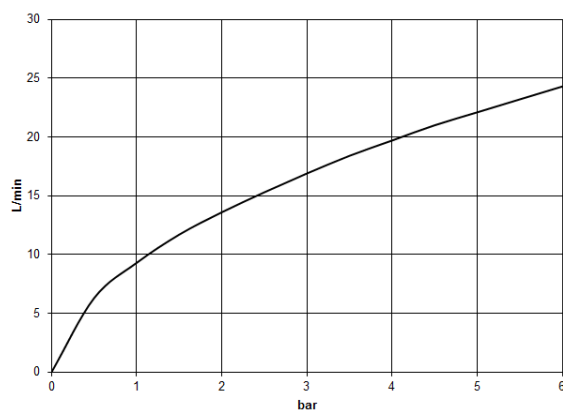
# IMO Single-lever bath mixer for wall mounting without shower set - Brushed Chrome

IMO

33 200 671 Product version from 4/1/2024  
mm [inches]



## Flow rate chart



## Codes & Standards

DIN 4109

ISO 3822

Scottish Water  
Byelaws

UK Water Supply  
Regulations

## Ü-Zeichen



## IMO Single-lever bath mixer for wall mounting without shower set - Brushed Chrome

IMO

---

33 200 671 Product version from 4/1/2024

Certificates and sustainability

---

LGA\_38

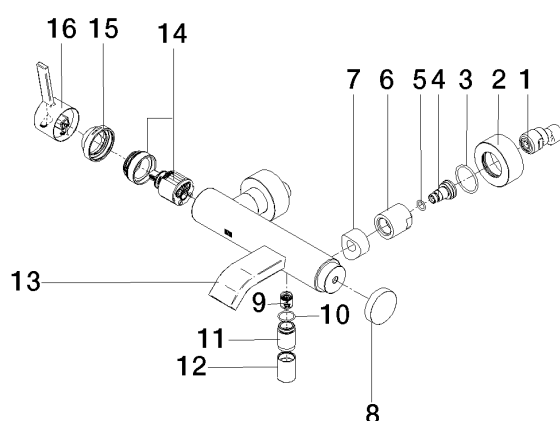
WRAS\_250102

# IMO Single-lever bath mixer for wall mounting without shower set - Brushed Chrome

IMO

33 200 671 Product version from 4/1/2024

Parts for other  
finishes can be found  
here: [Chrome](#)



## Spare parts list

| No.  | Item Number           | Name                | Quantity used | Delivery time |
|--|-----------------------|---------------------|---------------|---------------|
|  | 3 09 14 10 119 90     | seal                | 2.00          | 2             |
|  | 15 09 28 30 032-93    | cover               | 1.00          | 20            |
|  | 10 90 14 10 032 00 90 | seal                | 1.00          | 2             |
|  | 9 90 23 01 141 00 90  | back-flow preventer | 1.00          | 2             |
|  | 14 90 15 05 046 01 90 | cartridge           | 1.00          | 2             |
|  | 11 09 24 03 115 20-93 | nipple              | 1.00          | 20            |
|  | 1 04 11 04 030 00 90  | connection          | 1.00          | 2             |
|  | 6 09 23 10 048-93     | nut                 | 2.00          | 20            |
|  | 2 09 27 62 004-93     | rosette             | 2.00          | 20            |
|  | 13 90 11 06 228 00-93 | spout               | 1.00          | -             |
| Spare part can no longer be ordered, please order the replacement item |                       |                     |               |               |
|  | 16 90 20 67 020 00-93 | handle              | 1.00          | 20            |
|  | 8 09 20 62 031-93     | handle              | 1.00          | 20            |
|  | 12 90 21 02 069 00-93 | cover               | 1.00          | 20            |
|  | 4 09 29 05 005 20 90  | nipple              | 2.00          | 60            |
|  | 5 09 14 10 008 90     | seal                | 2.00          | 2             |
|  | 7 09 18 40 059-93     | sleeve              | 2.00          | 20            |