

LISSÉ Single-lever basin mixer with raised base with pop-up waste - Brushed Chrome



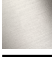




LISSÉ

33 506 845 Product version from 3/9/2016 to 10/31/2018



- 130mm projection
- fixed spout
- circular, air-enriched flow
- height of mixer 236 mm
- height up to aerator 185 mm
- hole diameter 35 mm
- 2x screw-in M 8 x 1 pressure hose, leak-tested
- max. flow 5.7 l/min
- lead-free
- This product can help a building meet the requirements of Green Building Rating Systems, e.g. LEED®, BREEAM®, DGNB
- WRAS

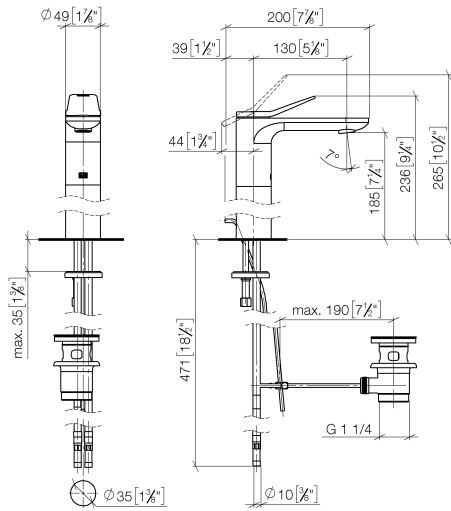
Only suitable for basins with an overflow.

| | | |
|---|-----------------------|---------------|
|  | Brushed Chrome | 33 506 845-93 |
|  | Chrome | 33 506 845-00 |
|  | Brushed Platinum | 33 506 845-06 |
|  | Dark Chrome | 33 506 845-19 |
|  | Brushed Light Gold | 33 506 845-27 |
|  | Matte Black | 33 506 845-33 |
|  | Brushed Dark Platinum | 33 506 845-99 |

LISSÉ Single-lever basin mixer with raised base with pop-up waste - Brushed Chrome

LISSÉ

33 506 845 Product version from 3/9/2016 to 10/31/2018
mm [inches]



Flow rate chart



Codes & Standards

DIN 4109

Executive Order
no. 1007

ISO 3822

Scottish Water
Byelaws

UK Water Supply
Regulations

Ü-Zeichen



LISSE Single-lever basin mixer with raised base with pop-up waste - Brushed Chrome

LISSE

33 506 845 Product version from 3/9/2016 to 10/31/2018

Certificates and sustainability

LGA_29

GDV_0400

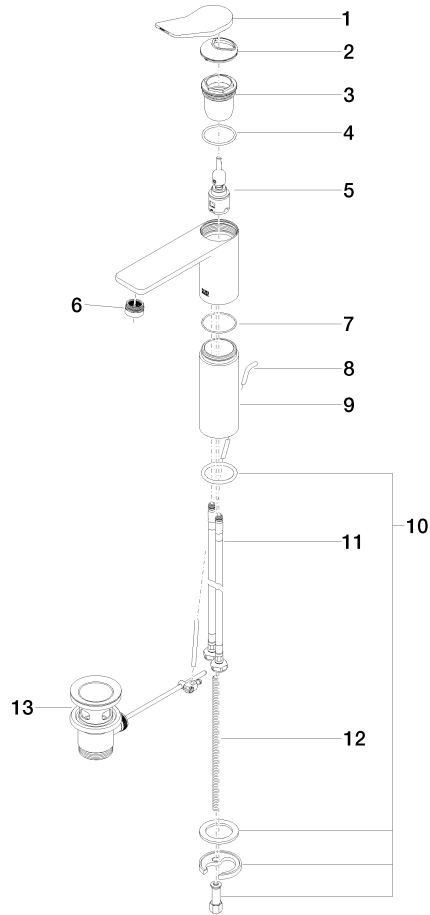
WRAS_250402

LISSÉ Single-lever basin mixer with raised base with pop-up waste - Brushed Chrome

LISSÉ

33 506 845 Product version from 3/9/2016 to 10/31/2018

Parts for other
finishes can be found
here: [Chrome](#)



Spare parts list

| No. | Item Number | Name | Quantity used | Delivery time |
|-----|-----------------------|--------------|---------------|---------------|
| | 2 09 28 30 034 90 | cover | 1.00 | 2 |
| | 9 09 28 22 305-93 | sleeve | 1.00 | 20 |
| | 6 90 23 01 161 01-93 | aerator | 1.00 | 20 |
| | 10 04 30 11 038 75 90 | fixing set | 1.00 | 2 |
| | 8 09 31 09 120-93 | pull-rod | 1.00 | 20 |
| | 12 09 31 11 000 90 | pin | 1.00 | 2 |
| | 7 09 14 10 108 90 | seal | 1.00 | 2 |
| | 5 90 15 05 042 01 90 | cartridge | 1.00 | 2 |
| | 1 90 20 84 020 00-93 | handle | 1.00 | 20 |
| | 3 09 23 10 123 90 | nut | 1.00 | 2 |
| | 11 04 30 04 101 00 90 | hose | 2.00 | 2 |
| | 4 09 14 10 038 90 | seal | 1.00 | 2 |
| | 13 90 11 01 001 00-93 | pop-up waste | 1.00 | 20 |