

## MEM BAR TAP Single-lever mixer - Chrome

MEM

33 805 682 Product version from 3/1/2023



- 166mm projection
- pivotable spout 360°
- Optional swivel limiter available with swivel limiter set 12 820 970 90
- air-enriched flow
- max. flow 6.3 l/min at 3 bar flow pressure
- lead-free
- This product can help a building meet the requirements of Green Building Rating Systems, e.g. LEED®, BREEAM®, DGNB
- WRAS

|                                                                                     |                                |               |
|-------------------------------------------------------------------------------------|--------------------------------|---------------|
|    | Chrome                         | 33 805 682-00 |
|    | Brushed Platinum               | 33 805 682-06 |
|    | Platinum                       | 33 805 682-08 |
|    | Durabronze (23kt Gold)         | 33 805 682-09 |
|    | Dark Chrome                    | 33 805 682-19 |
|    | Brushed Durabronze (23kt Gold) | 33 805 682-28 |
|    | Matte Black                    | 33 805 682-33 |
|    | Brushed Bronze                 | 33 805 682-42 |
|    | Brushed Champagne (22kt Gold)  | 33 805 682-46 |
|   | Champagne (22kt Gold)          | 33 805 682-47 |
|  | Brushed Chrome                 | 33 805 682-93 |
|  | Brushed Dark Platinum          | 33 805 682-99 |

### Recommended miscellaneous

**Swivel limitation set -** 12 820 970 90



### Recommended miscellaneous

**Strainer waste with control handle - Chrome** 10 712 970-00



### Recommended miscellaneous

**Dispenser without rosette - Chrome** 82 424 970-00

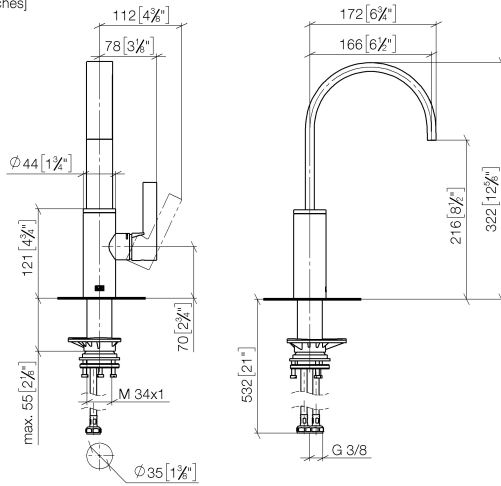


## MEM BAR TAP Single-lever mixer - Chrome

MEM

33 805 682 Product version from 3/1/2023

mm [inches]



### Flow rate chart



### Codes & Standards

DIN 4109

ISO 3822

Scottish Water  
Byelaws

UK Water Supply  
Regulations

Ü-Zeichen



## MEM BAR TAP Single-lever mixer - Chrome

---

MEM

33 805 682 Product version from 3/1/2023

Certificates and sustainability

---

LGA\_38

WRAS\_240202



## Spare parts list

| No. | Item Number        | Name       | Quantity used | Delivery time |
|-----|--------------------|------------|---------------|---------------|
| 1   | 90 28 22 282 00-00 | spout      | 1.00          | 10            |
| 8   | 04 23 10 044 08 90 | fixing set | 1.00          | 2             |
| 2   | 09 19 86 012-00    | cover      | 1.00          | 60            |
| 9   | 04 30 04 101 00 90 | hose       | 2.00          | 2             |
| 7   | 90 20 86 004 00-00 | handle     | 1.00          | 10            |
| 6   | 90 28 30 052 00-00 | cover      | 1.00          | 10            |
| 5   | 09 24 04 266 90    | nut        | 1.00          | 2             |
| 4   | 90 15 05 042 00 90 | cartridge  | 1.00          | 2             |
| 3   | 90 23 10 128 00 90 | nut        | 1.00          | 2             |