

## Concealed two-way diverter

SERIES SPECIFIC

35 207 970 90 Product version from 1/1/2025



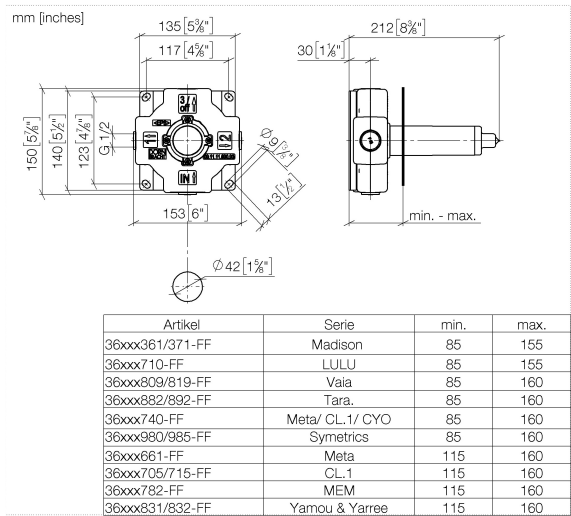
- red brass, lead-free
- 1x male 1/2" connector
- 2x female thread 1/2" outlet
- cut-to-length spindle and sleeve
- dust cover
- anti-water packing
- soundproofing

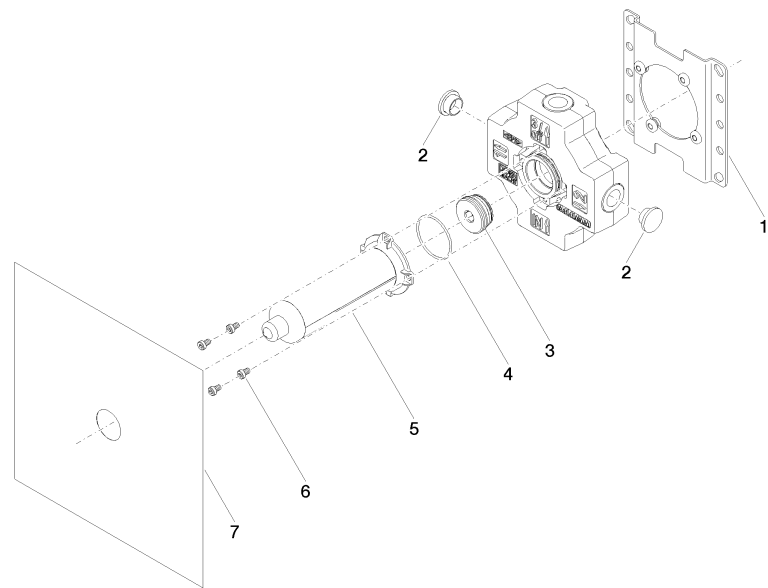
Extra valves can be connected separately.

# Concealed two-way diverter

SERIES SPECIFIC

35 207 970 90    Product version from 1/1/2025





**Spare parts list**

No.	Item Number	Name	Quantity used	Delivery time
1	04 17 20 252 00 90	base	1.00	60
7	04 14 03 116 00 90	gasket kit	1.00	2
6	09 30 30 112 90	screw	1.00	2
3	90 31 20 131 00 90	plug	1.00	2
2	09 31 20 092 90	plug	1.00	2
5	04 21 02 180 10 90	cap	1.00	2
4	09 14 10 210 90	seal	1.00	2