

eSET Touchfree Basin mixer with temperature setting for combining with wall-mounted fittings - SERIES-VARIOUS

35 741 970 90 Product version from 7/3/2017



- lead-free
- 2x male thread 1/2" connection
- 2x back flow preventer
- 2x integrated supply stop
- concealed installation
- min. recess depth 90 mm
- max. recess depth 125 mm
- WRAS

Can be combined with spouts from the Vaia, Lissé, CL.1, IMO, Tara., Tara Logic, Meta.02, Deque, Supernova, Symetrics, LULU and MEM series

Cannot be combined with spouts with a pull-rod pop-up waste.

Please combine with item no. 10 126 970-FF

Other series and finishes on request (x-TRA SERVICE)

ATTENTION: Separate terms and conditions for electronic articles are applicable.

Required miscellaneous

Leak protection 1/2" -

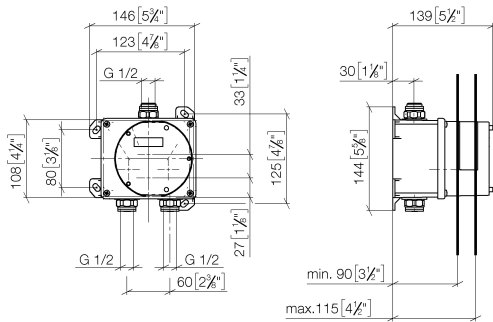
12 010 970 90

- This article is needed 2x.



eSET Touchfree Basin mixer with temperature setting for combining with wall-mounted fittings - SERIES-VARIOUS

35 741 970 90 Product version from 7/3/2017
mm [inches]



Codes & Standards

DIN 4109	EN 1717	ISO 3822	Scottish Water Byelaws
UK Water Supply Regulations	Ü-Zeichen		

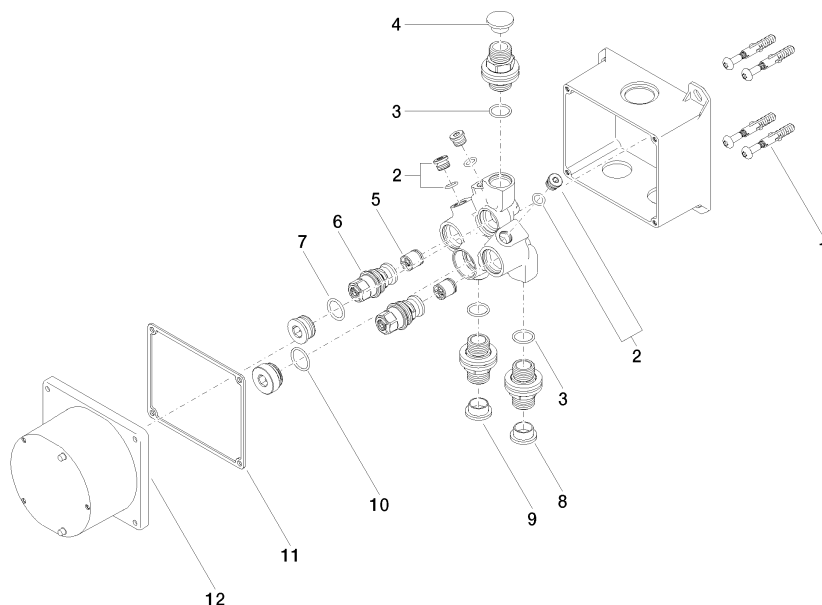
Certificates and sustainability

Belgaqua_23-210-2 LGA_29 WRAS_250302

eSET Touchfree Basin mixer with temperature setting for combining with wall-mounted fittings -

SERIES-VARIOUS

35 741 970 90 Product version from 7/3/2017



Spare parts list

No.	Item Number	Name	Quantity used	Delivery time
8	09 31 20 094 90	plug	1.00	2
4	09 31 20 092 90	plug	1.00	2
11	09 14 03 103 90	seal	1.00	2
6	04 29 05 031 01 90	insert	2.00	2
9	09 31 20 093 90	plug	1.00	2
1	04 30 31 024 01 90	fixing set	2.00	2
5	90 23 01 040 00 90	back-flow preventer	2.00	2
7	09 14 10 117 90	seal	1.00	2
12	09 11 11 011 90	lid	1.00	2
10	09 14 10 031 90	seal	1.00	2
2	04 31 20 039 11 90	plug	3.00	2
3	90 14 10 010 00 90	seal	3.00	2