

WATER FAN horizontal Concealed body spray - Brushed Champagne (22kt Gold)

SERIES-VARIOUS

36 512 979 Product version from 4/1/2024



- forceful flat water jet
- horizontal water jet
- cover plate 240 x 60 mm
- water jet adjustable
- 1/2" connection
- max. flow 10 l/min
- WRAS
- This product can help a building meet the requirements of Green Building Rating Systems, e.g. LEED®, BREEAM®, DGNB

	Brushed Champagne (22kt Gold)	36 512 979-46
	Chrome	36 512 979-00
	Brushed Platinum	36 512 979-06
	Platinum	36 512 979-08
	Dark Chrome	36 512 979-19
	Light Gold	36 512 979-26
	Brushed Light Gold	36 512 979-27
	Brushed Durabronze (23kt Gold)	36 512 979-28
	Matte Black	36 512 979-33
	Brushed Bronze	36 512 979-42
	Champagne (22kt Gold)	36 512 979-47
	Brushed Chrome	36 512 979-93
	Brushed Dark Platinum	36 512 979-99

Required miscellaneous



- Concealed wall installation box -** 35 206 970 90
- max. recess depth 173 mm
 - min. recess depth 100 mm

Required miscellaneous



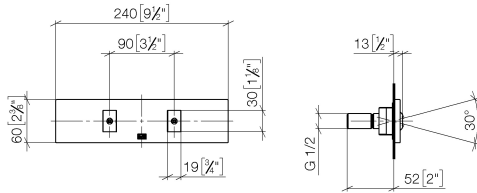
- xGRID Installation track 555 mm -** 12 360 970 90

Recommended miscellaneous

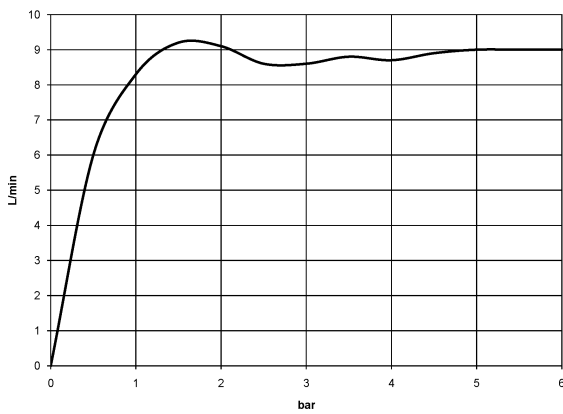


- xGRID Attachment set for integrating in the dry wall construction -** 12 340 970 90

36 512 979 Product version from 4/1/2024
mm [inches]



Flow rate chart



Trajectory diagram



Codes & Standards

DIN 4109

ISO 3822

Ü-Zeichen



WATER FAN horizontal Concealed body spray - Brushed Champagne (22kt Gold)

SERIES-VARIOUS

36 512 979 Product version from 4/1/2024

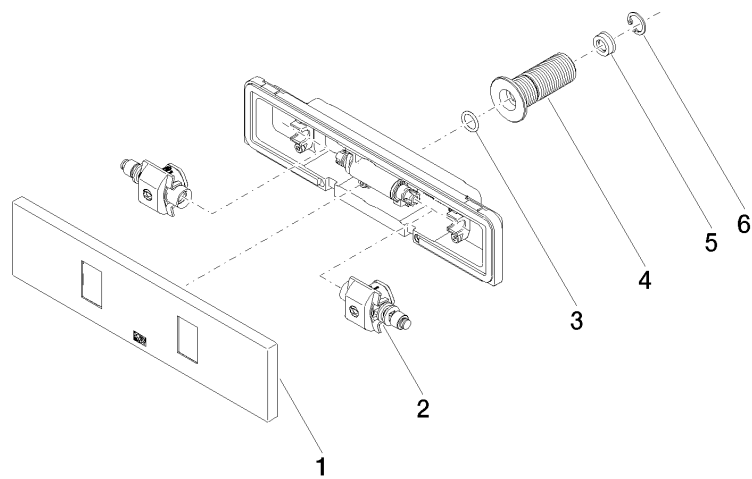
Certificates and sustainability

LGA_29

WATER FAN horizontal Concealed body spray - Brushed Champagne (22kt Gold)

SERIES-VARIOUS

36 512 979
Product version from 4/1/2024



Spare parts list

No.	Item Number	Name	Quantity used	Delivery time
2	90 31 10 012 00 90	insert	1.00	2
6	09 16 01 014 90	ring	1.00	2
1	90 27 99 002 00-46	insert	1.00	30
5	09 23 01 134 90	flow reducer	1.00	2
4	09 24 05 015 90	nipple	1.00	2
3	09 14 10 003 90	seal	1.00	2