

META Wall-mounted single-lever basin mixer without pop-up waste - Champagne (22kt Gold)

META

36 860 660 Product version from 7/1/2023



- 190mm projection
- fixed spout
- circular, air-enriched flow
- hole diameter spout 37 mm
- hole diameter single-lever mixer 57 mm
- rosette for spout Ø 55mm
- rosette for mixer Ø 78mm
- max. flow 5.7 l/min
- lead-free
- This product can help a building meet the requirements of Green Building Rating Systems, e.g. LEED®, BREEAM®, DGNB
- WRAS

| | | |
|--|-------------------------------|---------------|
| | Champagne (22kt Gold) | 36 860 660-47 |
| | Chrome | 36 860 660-00 |
| | Brushed Platinum | 36 860 660-06 |
| | Dark Chrome | 36 860 660-19 |
| | Light Gold | 36 860 660-26 |
| | Brushed Light Gold | 36 860 660-27 |
| | Matte Black | 36 860 660-33 |
| | Brushed Bronze | 36 860 660-42 |
| | Brushed Champagne (22kt Gold) | 36 860 660-46 |
| | Brushed Chrome | 36 860 660-93 |
| | Brushed Dark Platinum | 36 860 660-99 |

Required miscellaneous



Concealed wall-mounted single-lever mixer mixer on right - 35 816 970 90

- NOTE:Not suitable for concealed installation.Connection by means of angle valves, mounted with screws to back wall.

Required miscellaneous



Concealed wall-mounted single-lever mixer - 35 860 970 90

- min. recess depth 80 mm
- max. recess depth 95 mm
- mixer can be placed above, to the left or to the right of the spout.

META Wall-mounted single-lever basin mixer without pop-up waste - Champagne (22kt Gold)

META

36 860 660 Product version from 7/1/2023
mm [inches]



Flow rate chart



Trajectory diagram



Codes & Standards

EN 817

Scottish Water
Byelaws

UK Water Supply
Regulations



META Wall-mounted single-lever basin mixer without pop-up waste - Champagne (22kt Gold)

META

36 860 660 Product version from 7/1/2023

Certificates and sustainability

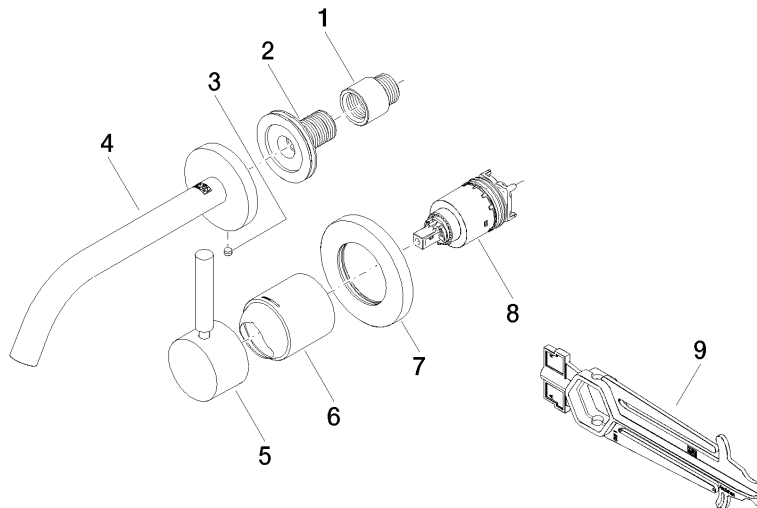
DVGW_DW-
6512DN0

WRAS_2107

META Wall-mounted single-lever basin mixer without pop-up waste - Champagne (22kt Gold)

META

36 860 660 Product version from 7/1/2023



Spare parts list

| No. | Item Number | Name | Quantity used | Delivery time |
|-----|--------------------|-----------|---------------|---------------|
| 6 | 09 11 02 288-47 | cover | 1.00 | 30 |
| 1 | 09 24 03 072 10 90 | nipple | 1.00 | 2 |
| 8 | 90 15 05 064 01 90 | cartridge | 1.00 | 2 |
| 4 | 90 28 22 323 00-47 | spout | 1.00 | 30 |
| 2 | 90 24 03 280 00 90 | nipple | 1.00 | 2 |
| 7 | 90 27 62 011 00-47 | rosette | 1.00 | 30 |
| 5 | 90 20 66 007 00-47 | handle | 1.00 | 30 |
| 3 | 09 31 11 112 90 | pin | 1.00 | 60 |
| 9 | 90 30 09 064 00 90 | key | 1.00 | 2 |