

## CL.1 Wall-mounted single-lever basin mixer without pop-up waste - Chrome

CL.1

36 860 705 Product version from 7/1/2023



- 198mm projection
- fixed spout
- rectangular spray pattern with 40 individual jets
- hole diameter spout 37 mm
- hole diameter single-lever mixer 57 mm
- rosette 80 x 80 mm
- max. flow 4.5 l/min
- lead-free
- This product can help a building meet the requirements of Green Building Rating Systems, e.g. LEED®, BREEAM®, DGNB

	Chrome	36 860 705-00
	Brushed Platinum	36 860 705-06
	Dark Chrome	36 860 705-19
	Brushed Champagne (22kt Gold)	36 860 705-46
	Champagne (22kt Gold)	36 860 705-47
	Brushed Dark Platinum	36 860 705-99

### Required miscellaneous



- Concealed wall-mounted single-lever mixer -** 35 860 970 90
- max. recess depth 95 mm
  - min. recess depth 80 mm
  - mixer can be placed above, to the left or to the right of the spout.

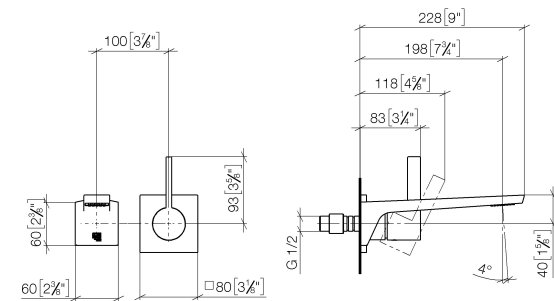
### Required miscellaneous



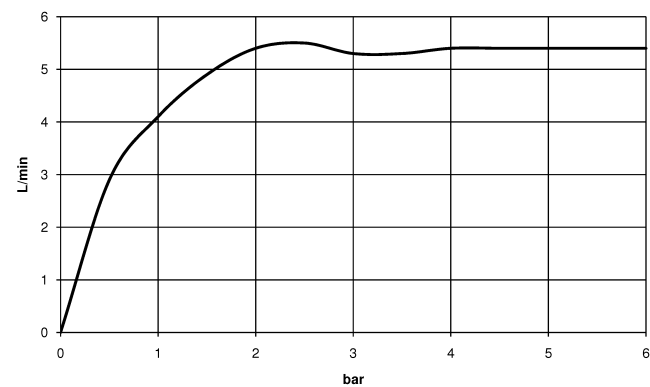
- Concealed wall-mounted single-lever mixer mixer on right -** 35 816 970 90
- NOTE: Not suitable for concealed installation. Connection by means of angle valves, mounted with screws to back wall.

36 860 705 Product version from 7/1/2023


mm [inches]



Flow rate chart



Codes & Standards

ASME A112.18.1	cUPC	DIN 4109	EN 817
EPA WaterSense	ISO 3822	NSF372	NSF61
Ü-Zeichen	WaterSense		



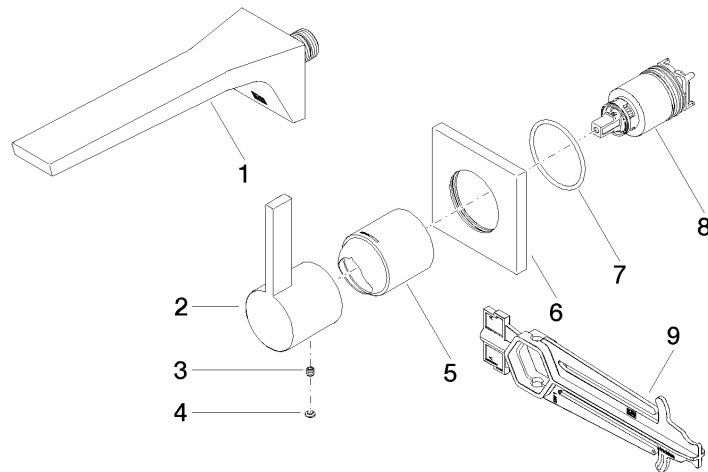
CL.1 Wall-mounted single-lever basin mixer without pop-up waste - Chrome

CL.1

36 860 705 Product version from 7/1/2023

Certificates and sustainability

IAPMO_N-4976	DVGW_DW-6512DN0	IAPMO_6397	LGA_29	IAPMO_8834
IAPMO_4976 (				



## Spare parts list

No.	Item Number	Name	Quantity used	Delivery time
6	09 27 78 039-00	rosette	1.00	10
4	90 31 20 087 00-00	plug	1.00	10
1	13 800 705-00	CL.1 Wall-mounted basin spout without pop-up waste - Chrome	1.00	2
2	09 20 70 050-00	handle	1.00	10
5	09 11 02 288-00	cover	1.00	10
8	90 15 05 064 01 90	cartridge	1.00	2
7	90 14 10 049 00 90	seal	1.00	2
3	90 31 11 030 00 90	pin	1.00	2
9	90 30 09 064 00 90	key	1.00	2