

41 615 979



- exposed trim parts
- Rain panel with 2 different spray modes
- AQUACIRCLE RAIN: Circular rain curtain, max. flow rate 6.8 l/min (at 3 bar)
- TEMPEST RAIN: Natural rain, max. flow rate 5 l/min (at 3 bar)

Ceiling module power supply

- 12V DC (CV)

Ambient lighting

- LED coloured light RGBW
- Bulbs protected against splashing water

Activation

- ZigBee Light Link RGBW controller
- Provided by customer: Zigbee gateway

Environment

- Not suitable for outdoor use.
- Not suitable for use in a steam room.
- Not suitable for use in chlorinated or salty environments.
- Comply with the protection zone regulations as defined in DIN VDE 0100, Part 701 (IEC 60364-7-701).
- Dornbracht recommends consulting a systems integrator.

Rain panel cover for adaptation to ceiling colour available in all RAL colours, price and delivery time on request
includes light bulbs with a Class G energy efficiency
Pre-assembly kit for three-way diverter included

Rain panel cover for adaptation to ceiling colour available in all RAL colours, price and delivery time on request

includes light bulbs with a Class G energy efficiency

Pre-assembly kit for three-way diverter included

Required miscellaneous



RAINMOON Concealed ceiling installation box with color light - 35 615 970 90

- Ceiling installation enclosure 1356 x 1356 x 290 mm
- concealed rough parts
- Opening diameter 1252 mm
- min. recess depth 290 mm
- Pre-assembly kit for three-way diverter included



RAINMOON Rain panel with color light - Matte White

SERIES-VARIOUS

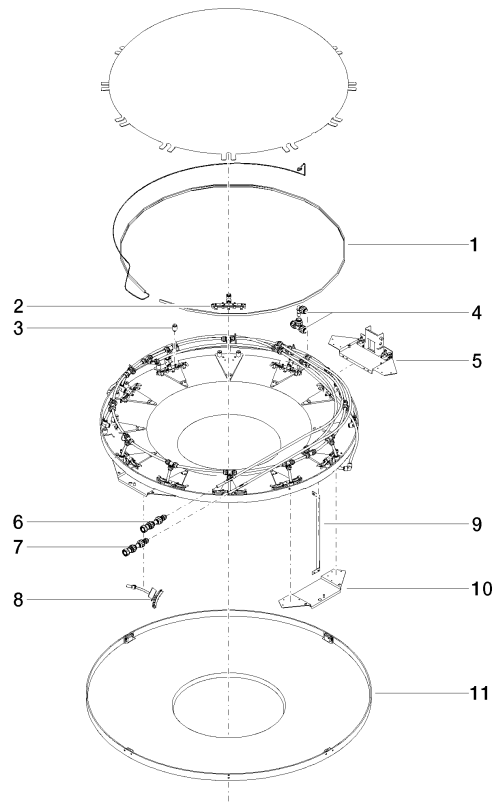
41 615 979

Codes & Standards

DIN 4109	ISO 3822	Ü-Zeichen
----------	----------	-----------

Certificates and sustainability

LGA_29



Spare parts list

No.	Item Number	Name	Quantity used	Delivery time
2	90 17 09 056 01 90	jet module	12.00	60
6	90 24 04 346 01 90	connection AQUACIRCLE	1.00	2
10	90 17 20 216 00 90	holder	3.00	2
5	90 17 20 211 00 90	joint	1.00	2
8	90 17 09 057 01 90	jet module	12.00	2
9	90 17 20 217 00 90	holder	4.00	2
4	90 24 04 321 00 90	threaded connector	1.00	2
1	90 10 01 183 01 90	lamp	1.00	2
7	90 24 04 346 02 90	connection TEMPEST	1.00	2
3	90 18 40 222 00 90	adaptor	24.00	2
11	90 11 02 325 00 90	cover	1.00	2