

41 625 979



- exposed trim parts
- Rain panel with 3 different flow modes
- AQUACIRCLE RAIN: Circular rain curtain, max. flow rate 12 l/min (at 3 bar)
- TEMPEST RAIN: Natural rain, max. flow rate 10 l/min (at 3 bar)
- QUEEN'S COLLAR CASCADE: Rounded cascade, max. flow rate 24 l/min (at 3 bar)
- Matt white cover, RAL 9003
- with anti-scale system
- Outer diameter 1240 mm, opening diameter 450 mm
- Flow rate at 3 bar flow pressure in conjunction with xTOOL: 46 l/min
- Weight 22.5 kg
- Protection rating IP67
- Control elements not included among the items supplied

## Ceiling module power supply

- 12V DC (CV)

## Ambient lighting

- LED coloured light RGBW
- Bulbs protected against splashing water

## Activation

- ZigBee Light Link RGBW controller
- Provided by customer: Zigbee gateway

## Environment

- Not suitable for outdoor use.
- Not suitable for use in a steam room.
- Not suitable for use in chlorinated or salty environments.
- Comply with the protection zone regulations as defined in DIN VDE 0100, Part 701 (IEC 60364-7-701).
- Dornbracht recommends consulting a systems integrator.

**Rain panel cover for adaptation to ceiling colour available in all RAL colours, price and delivery time on request includes light bulbs with a Class G energy efficiency**

Rain panel cover for adaptation to ceiling colour available in all RAL colours, price and delivery time on request

includes light bulbs with a Class G energy efficiency

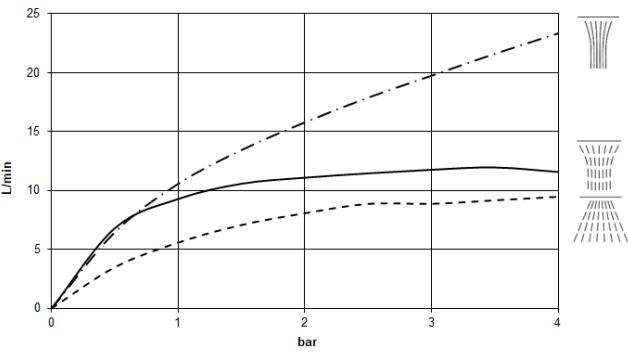
## Required miscellaneous



### AQUAMOON Concealed ceiling installation box with color light - 35 625 970 90

- Ceiling installation enclosure 1356 x 1356 x 290 mm
- concealed rough parts
- Opening diameter 1252 mm
- min. recess depth 290 mm

Flow rate chart



Codes & Standards

DIN 4109

ISO 3822

Ü-Zeichen



## AQUAMOON Rain panel with color light - Matte White

---

SERIES-VARIOUS

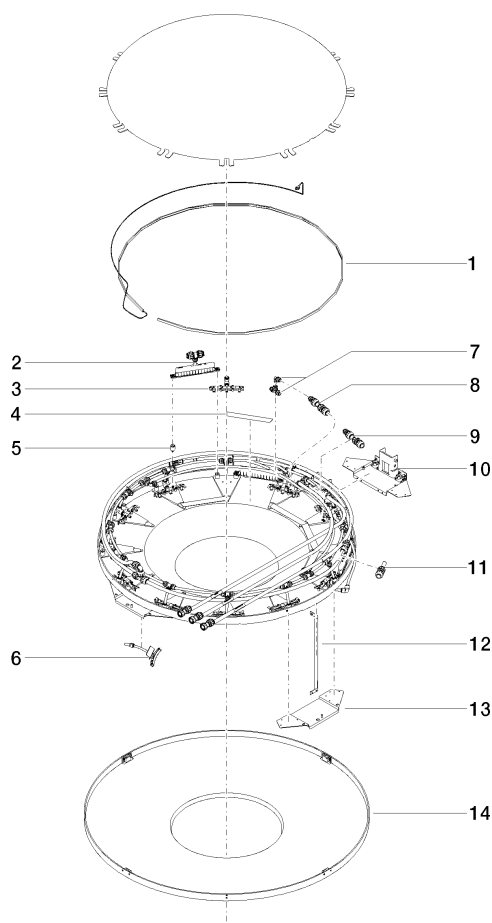
41 625 979

Certificates and sustainability

---

LGA\_29

41 625 979



## Spare parts list

| No. | Item Number        | Name                    | Quantity used | Delivery time |
|-----|--------------------|-------------------------|---------------|---------------|
| 7   | 90 24 04 321 00 90 | threaded connector      | 1.00          | 2             |
| 11  | 90 24 04 314 01 90 | connection QUEENSCOLLAR | 1.00          | 2             |
| 5   | 90 18 40 222 00 90 | adaptor                 | 24.00         | 2             |
| 6   | 90 17 09 057 00 90 | jet module              | 12.00         | 2             |
| 4   | 90 17 20 221 00 90 | holder                  | 5.00          | 2             |
| 13  | 90 17 20 216 00 90 | holder                  | 3.00          | 2             |
| 1   | 90 10 01 183 01 90 | lamp                    | 1.00          | 2             |
| 14  | 90 11 02 325 00 90 | cover                   | 1.00          | 2             |
| 8   | 90 24 04 346 00 90 | connection AQUACIRCLE   | 1.00          | 2             |
| 12  | 90 17 20 217 00 90 | holder                  | 4.00          | 2             |
| 10  | 90 17 20 211 00 90 | joint                   | 1.00          | 2             |
| 9   | 90 24 04 314 00 90 | connection TEMPEST      | 1.00          | 60            |
| 2   | 90 17 09 058 00 90 | jet module              | 5.00          | 2             |
| 3   | 90 17 09 056 02 90 | spout                   | 12.00         | 2             |