



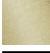



36 607 361



- Roseta Ø 55 mm
- Montura con husillo ajustable y camisa
- 3x Plaquitas de porcelana HOT, COLD y NEUTRAL

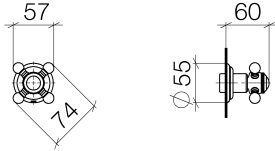
	Cromo	36 607 361-00
	Platino cepillado	36 607 361-06
	Platino	36 607 361-08
	Latón (Oro 23k)	36 607 361-09
	Latón cepillado (Oro 23k)	36 607 361-28
	Dark Platinum cepillado	36 607 361-99

**Complementos necesarios**



- Válvula empotrada 1/2" -** 35 607 970 90
- Profundidad de montaje mín. 75 mm
  - Profundidad de montaje máx. 145 mm

36 607 361



Certificado

DVGW\_DW-  
6501DN0116.

WRAS\_2011026.

IAPMO\_4976 (1).

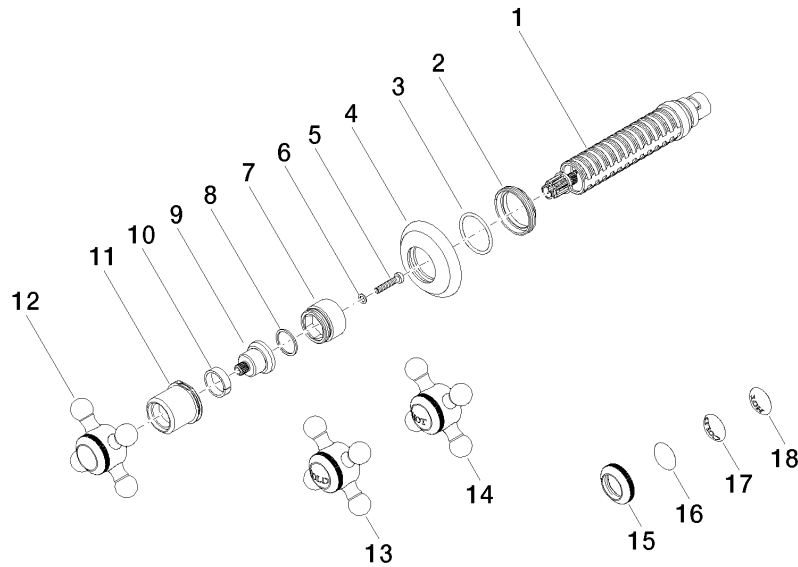
LGA\_29931.

WRAS\_2010066.

DVGW\_DW-  
6512DN0706.

LGA\_29932.

36 607 361



Lista de piezas de recambios

N°	Número de artículo	Denominación	Cantidad de montaje	Plazo de entrega
1	90 90 03 143 00 90	parte superior	1	2
2	09 23 10 125-00	tuerca	1	10
3	90 14 10 063 00 90	sello	1	2
4	09 27 36 102-00	roseta	1	10
5	90 30 30 075 00 90	tornillo	1	2
6	09 30 11 194 90	disco	1	2
7	09 18 30 007-00	camisa	1	10
8	90 28 10 030 00 90	anillo	1	2
9	09 12 12 064-00	alojamiento	1	10
10	90 14 15 021 00 90	anillo	1	2
11	09 21 02 161-00	funda	1	10
12	04 20 36 100 02-00	manilla	1	10
13	04 20 36 100 00-00	manilla ( cold )	1	10
14	04 20 36 100 01-00	manilla ( hot )	1	10
15	09 20 36 005-00	manilla	1	10
16	09 26 01 016 90	accessorio	1	2
17	09 26 01 010 90	accessorio	1	2
18	09 26 01 011 90	accessorio	1	2