








CL.1 Bath spout without diverter for deck mounting - Brushed Champagne (22kt Gold)

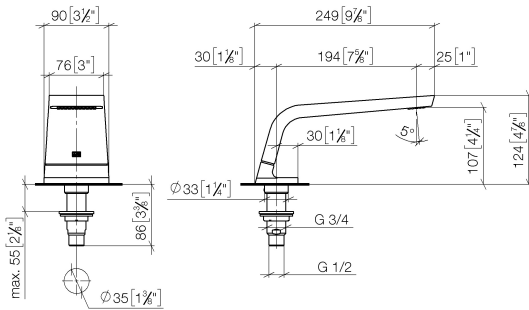
CL.1

13 612 705 Product version from 5/27/2021			
	<ul style="list-style-type: none"> • 200mm projection • rectangular spray pattern with 55 individual jets • height of mixer 125 mm • height up to aerator 108 mm • hole diameter 35 mm • 1/2" connection • max. flow 24.6 l/min at 3 bar flow pressure • WRAS 		Brushed Champagne (22kt Gold) 13 612 705-46
			Chrome 13 612 705-00
			Brushed Platinum 13 612 705-06
			Dark Chrome 13 612 705-19
			Champagne (22kt Gold) 13 612 705-47
			Brushed Dark Platinum 13 612 705-99

CL.1 Bath spout without diverter for deck mounting - Brushed Champagne (22kt Gold)

CL.1

13 612 705 Product version from 5/27/2021
mm [inches]



Flow rate chart



Codes & Standards

ASME A112.18.1	cUPC	DIN 4109	ISO 3822
----------------	------	----------	----------

Ü-Zeichen



CL.1 Bath spout without diverter for deck mounting - Brushed Champagne (22kt Gold)

CL.1

13 612 705 Product version from 5/27/2021

Certificates and sustainability

LGA_28

IAPMO_4976

CL.1 Bath spout without diverter for deck mounting - Brushed Champagne (22kt Gold)

CL.1

13 612 705 Product version from 5/27/2021

Parts for other
finishes can be found
here: [Chrome](#)



Spare parts list

No.	Item Number	Name	Quantity used	Delivery time
1	90 11 70 007 00-46	spout	1.00	30
3	09 14 10 009 90	seal	1.00	2
4	09 30 01 117 90	connection	1.00	2
5	09 23 01 057 90	flow reducer	1.00	2
6	09 18 40 090 90	sleeve	1.00	2
7	04 23 10 004 03 90	fixing set	1.00	2
2	09 31 11 099 90	pin	1.00	2