

## MEM Deck-mounted basin spout with pop-up waste - Champagne (22kt Gold)

MEM

13 715 782

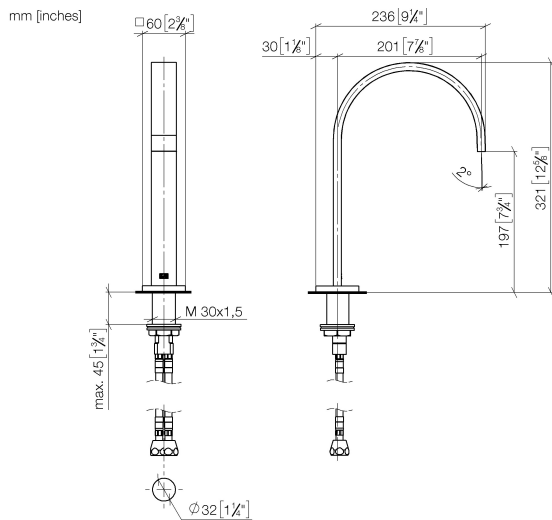


- 200mm projection
- fixed spout
- rectangular, air-enriched flow
- height of mixer 321 mm
- height up to aerator 190 mm
- hole diameter 35 mm
- 2x screw-in M 10 x 1 pressure hose, leak-tested
- rosette 60 x 60 mm
- max. flow 5.7 l/min
- lead-free
- This product can help a building meet the requirements of Green Building Rating Systems, e.g. LEED®, BREEAM®, DGNB

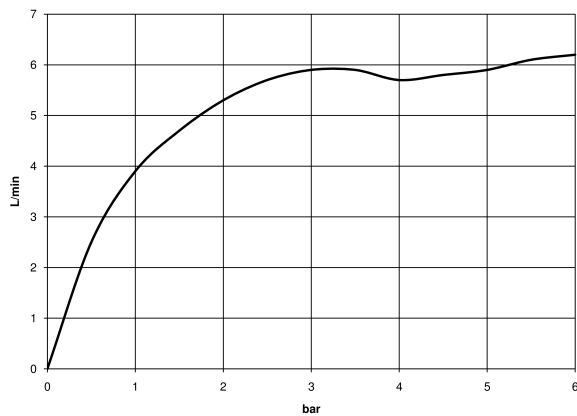
Only suitable for basins with an overflow.

|  |                                |               |
|--|--------------------------------|---------------|
|  | Champagne (22kt Gold)          | 13 715 782-47 |
|  | Chrome                         | 13 715 782-00 |
|  | Brushed Platinum               | 13 715 782-06 |
|  | Platinum                       | 13 715 782-08 |
|  | Dark Chrome                    | 13 715 782-19 |
|  | Brushed Durabronze (23kt Gold) | 13 715 782-28 |
|  | Brushed Champagne (22kt Gold)  | 13 715 782-46 |
|  | Brushed Dark Platinum          | 13 715 782-99 |

13 715 782



### Flow rate chart



### Codes & Standards

Executive Order  
no. 1007



## MEM Deck-mounted basin spout with pop-up waste - Champagne (22kt Gold)

---

MEM

13 715 782

Certificates

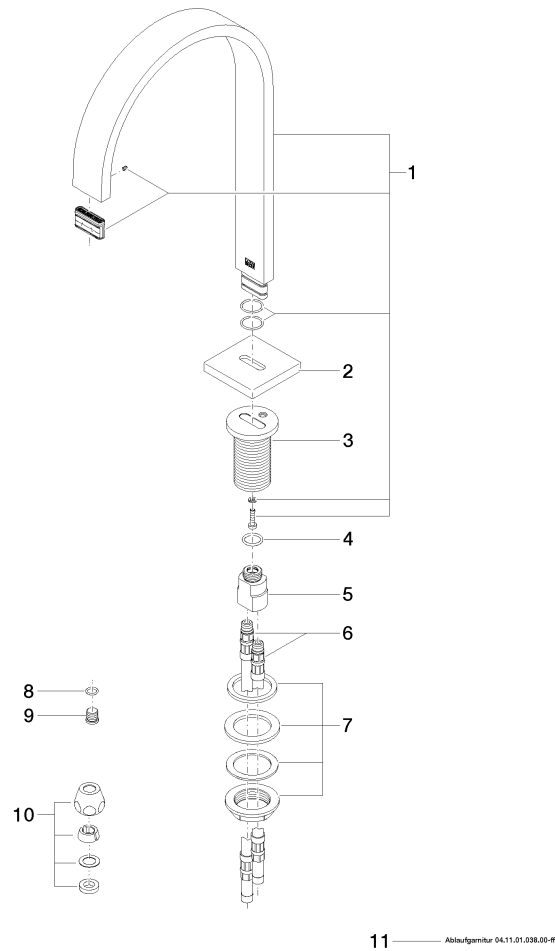
---

GDV\_0400

13 715 782

**Product version from 7/1/2021**

Parts for other  
finishes can be found  
here: [Chrome](#)





## MEM Deck-mounted basin spout with pop-up waste - Champagne (22kt Gold)

---

MEM

13 715 782

### **Spare parts list**

**Product version from 7/1/2021**