

## LULU Wall-mounted basin spout without pop-up waste - Chrome

LULU

13 800 710



- 200mm projection
- fixed spout
- circular, air-enriched flow
- hole diameter 40 mm
- 1/2" connection
- plug-link mounting
- max. flow 7 l/min
- lead-free
- This product can help a building meet the requirements of Green Building Rating Systems, e.g. LEED®, BREEAM®, DGNB
- WRAS 1906062

For Touchfree control please order eSet Touchfree  
WITH or WITHOUT temperature adjustment

### Recommended miscellaneous



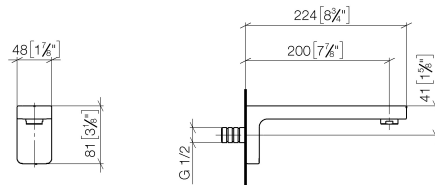
**Concealed wall elbow -**

35 085 970 90

- max. recess depth 163 mm
- min. recess depth 90 mm

13 800 710

mm [inches]



### Flow rate chart



### Codes & Standards

DIN 4109

ISO 3822

Scottish Water  
Byelaws

UK Water Supply  
Regulations

Ü-Zeichen



## LULU Wall-mounted basin spout without pop-up waste - Chrome

---

LULU

13 800 710

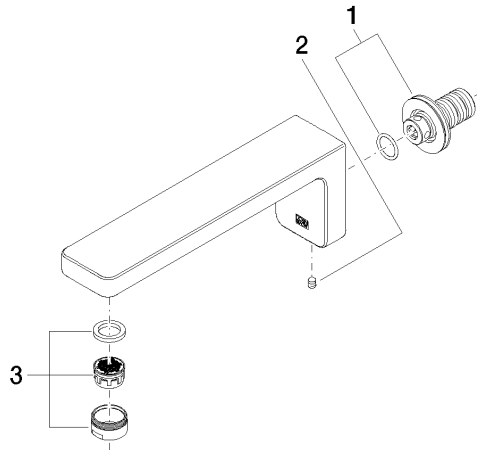
### Certificates

---

WRAS\_1906

LGA\_29

**Product version from 3/13/2017**





## LULU Wall-mounted basin spout without pop-up waste - Chrome

LULU

13 800 710

### Spare parts list

#### Product version from 3/13/2017

No.	Item Number	Name	Quantity used	Delivery time
	90 24 03 108 00 90	nipple set	3	2