




MEM Wall-mounted basin spout without pop-up waste - Brushed Durabrass (23kt Gold)

13 800 782 Product version from 3/10/2014



- 200mm projection
- fixed spout
- rectangular, air-enriched flow
- hole diameter 37 mm
- rosette 60 x 60 mm
- 1/2" connection
- max. flow 5.7 l/min
- lead-free
- WRAS
- This product can help a building meet the requirements of Green Building Rating Systems, e.g. LEED®, BREEAM®, DGNB

	Brushed Durabrass (23kt Gold)	13 800 782-28
	Chrome	13 800 782-00
	Brushed Platinum	13 800 782-06
	Platinum	13 800 782-08
	Dark Chrome	13 800 782-19
	Brushed Champagne (22kt Gold)	13 800 782-46
	Champagne (22kt Gold)	13 800 782-47
	Brushed Dark Platinum	13 800 782-99

Recommended miscellaneous

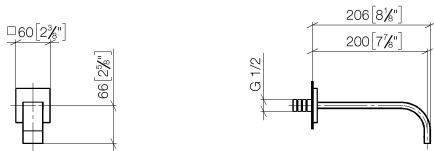
- Concealed wall elbow -**
- max. recess depth mm
 - min. recess depth mm

35 085 970 90



**MEM Wall-mounted basin spout without pop-up waste - Brushed Durabronz
(23kt Gold)**

13 800 782 Product version from 3/10/2014
mm [inches]



Flow rate chart



Codes & Standards

Scottish Water Byelaws UK Water Supply Regulations



MEM Wall-mounted basin spout without pop-up waste - Brushed Durabrass (23kt Gold)

13 800 782 Product version from 3/10/2014

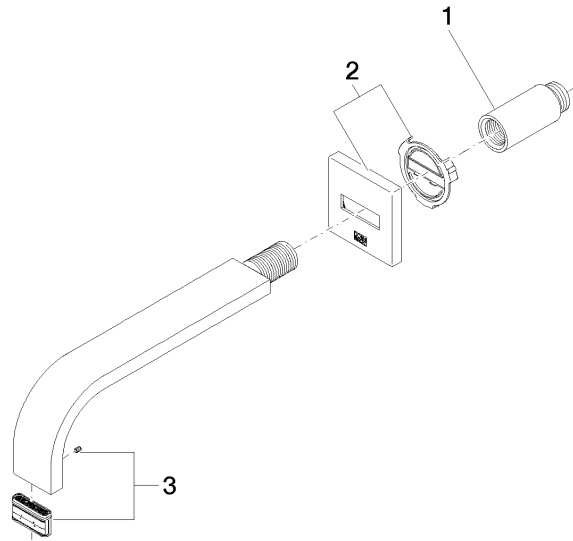
Certificates

WRAS_2203

MEM Wall-mounted basin spout without pop-up waste - Brushed Durabrass

(23kt Gold)

13 800 782 Product version from 3/10/2014



Spare parts list

No.	Item Number	Name	Quantity used	Delivery time
1	09 24 03 081 10 90	extension	1	2
2	90 27 78 035 00-28	rosette	1	20
3	90 29 03 109 00 90	aerator	1	2