

VAIA Wall-mounted basin spout without pop-up waste - Brushed Platinum

VAIA

13 800 809 Product version from 3/13/2017



- 190mm projection
- fixed spout
- circular, air-enriched flow
- hole diameter 37 mm
- rosette Ø 60 mm
- 1/2" connection
- plug-link mounting
- max. flow 5.7 l/min
- lead-free
- WRAS
- This product can help a building meet the requirements of Green Building Rating Systems, e.g. LEED®, BREEAM®, DGNB

For Touchfree control please order eSet Touchfree with temperature adjustment

| | | |
|--|--------------------------------|---------------|
|  | Brushed Platinum | 13 800 809-06 |
|  | Chrome | 13 800 809-00 |
|  | Platinum | 13 800 809-08 |
|  | Dark Chrome | 13 800 809-19 |
|  | Brushed Durabronze (23kt Gold) | 13 800 809-28 |
|  | Brushed Dark Brass | 13 800 809-39 |
|  | Brushed Bronze | 13 800 809-42 |
|  | Brushed Champagne (22kt Gold) | 13 800 809-46 |
|  | Champagne (22kt Gold) | 13 800 809-47 |
|  | Brushed Dark Platinum | 13 800 809-99 |

Recommended miscellaneous



Concealed wall elbow -

35 085 970 90

- max. recess depth 163 mm
- min. recess depth 90 mm



Flow rate chart



Trajectory diagram



Codes & Standards

DIN 4109

ISO 3822

Scottish Water
Byelaws

UK Water Supply
Regulations

Ü-Zeichen



VAIA Wall-mounted basin spout without pop-up waste - Brushed Platinum

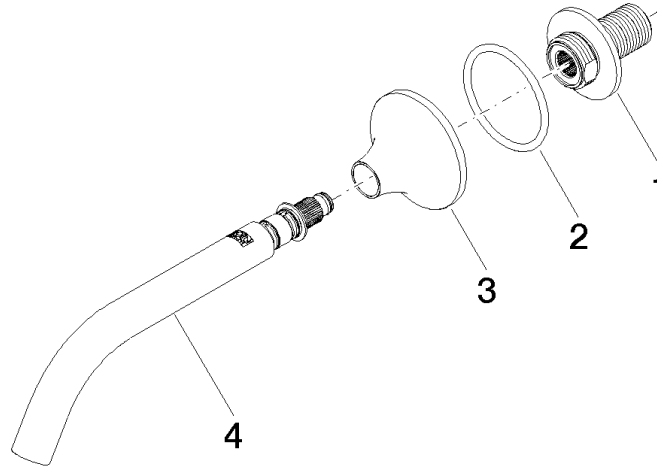
VAIA

13 800 809 Product version from 3/13/2017

Certificates and sustainability

WRAS_2306

LGA_29



Spare parts list

| No. | Item Number | Name | Quantity used | Delivery time |
|-----|--------------------|---------|---------------|---------------|
| 1 | 09 24 03 269 90 | nipple | 1.00 | 2 |
| 3 | 09 27 80 011-06 | rosette | 1.00 | 10 |
| 4 | 90 28 22 310 00-06 | spout | 1.00 | 10 |
| 2 | 09 14 10 084 90 | seal | 1.00 | 2 |