

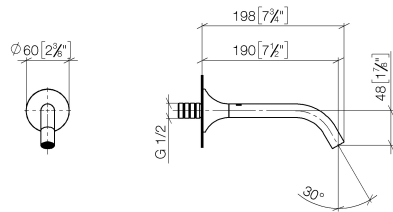
13 800 809 Product version from 3/13/2017



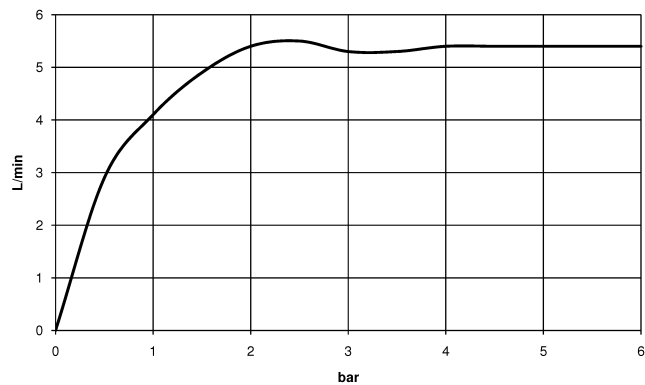
- 190mm projection
- fixed spout
- circular, air-enriched flow
- hole diameter 37 mm
- rosette Ø 60 mm
- 1/2" connection
- plug-link mounting
- max. flow 5.7 l/min
- lead-free
- WRAS
- This product can help a building meet the requirements of Green Building Rating Systems, e.g. LEED®, BREEAM®, DGNB

For Touchfree control please order eSet Touchfree with temperature adjustment

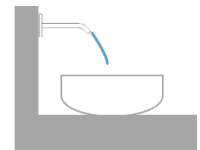
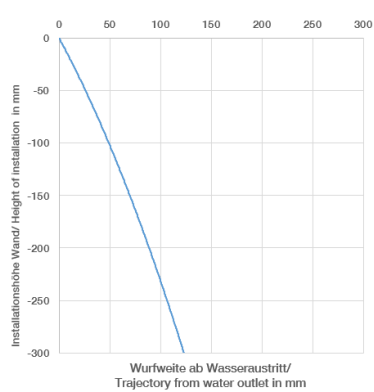
	Brushed Dark Brass	13 800 809-39
	Chrome	13 800 809-00
	Brushed Platinum	13 800 809-06
	Platinum	13 800 809-08
	Dark Chrome	13 800 809-19
	Brushed Durabronze (23kt Gold)	13 800 809-28
	Brushed Bronze	13 800 809-42
	Brushed Champagne (22kt Gold)	13 800 809-46
	Champagne (22kt Gold)	13 800 809-47
	Brushed Dark Platinum	13 800 809-99



Flow rate chart



Trajectory diagram



Codes & Standards

DIN 4109

ISO 3822

Scottish Water
Byelaws

UK Water Supply
Regulations

Ü-Zeichen



VAIA Wall-mounted basin spout without pop-up waste - Brushed Dark Brass

VAIA

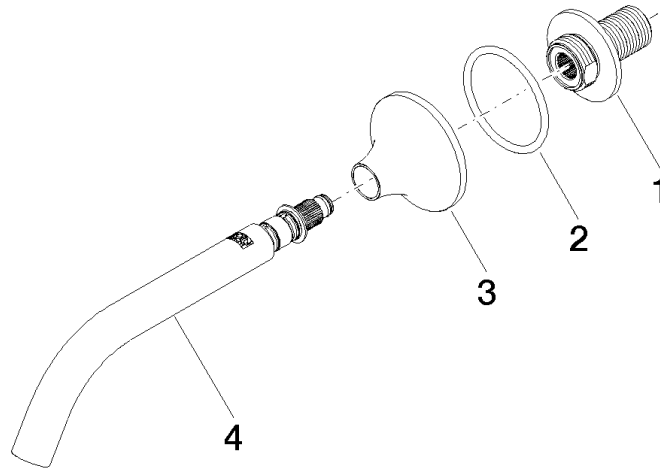
13 800 809 Product version from 3/13/2017

Certificates and sustainability

WRAS_2306

LGA_29

Parts for other
finishes can be found
here: [Chrome](#)



Spare parts list

No.	Item Number	Name	Quantity used	Delivery time
3	09 27 80 011-39	rosette	1.00	60
4	90 28 22 310 00-39	spout	1.00	30
1	09 24 03 269 90	nipple	1.00	2
2	09 14 10 084 90	seal	1.00	2