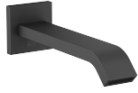


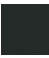





IMO Bath spout for wall mounting - Matte Black

IMO

13 801 670



- 200mm projection
- rectangular normal flow
- hole diameter 37 mm
- 1/2" connection
- max. flow 25.1 l/min at 3 bar flow pressure
- WRAS 2005002

	Matte Black	13 801 670-33
	Chrome	13 801 670-00
	Brushed Platinum	13 801 670-06
	Dark Chrome	13 801 670-19
	Brushed Light Gold	13 801 670-27
	Brushed Chrome	13 801 670-93

Recommended miscellaneous



Concealed wall elbow -

35 085 970 90

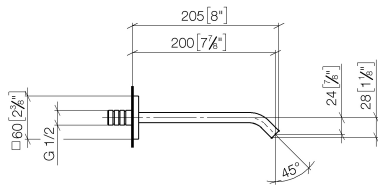
- max. recess depth 163 mm
- min. recess depth 90 mm

IMO Bath spout for wall mounting - Matte Black

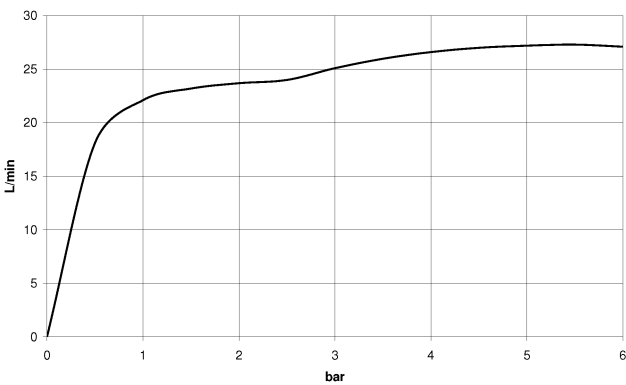
IMO

13 801 670

mm [inches]



Flow rate chart



Codes & Standards

ASME A112.18.1

cUPC



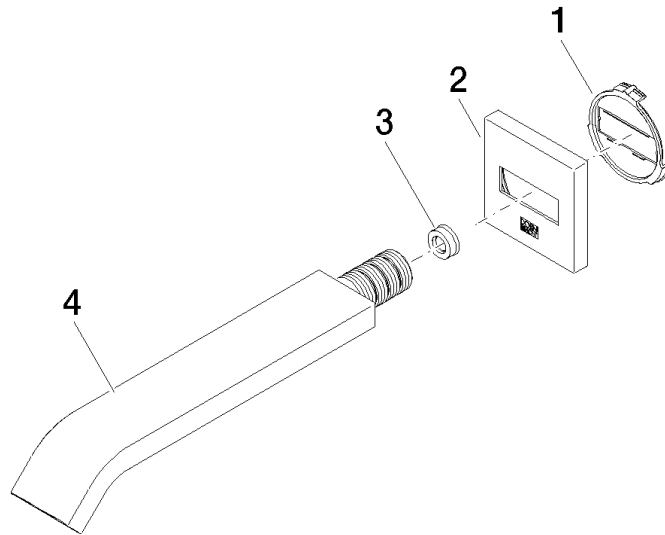
IMO Bath spout for wall mounting - Matte Black

IMO

13 801 670

Certificates

IAPMO_4976





IMO Bath spout for wall mounting - Matte Black

IMO

13 801 670

Spare parts list