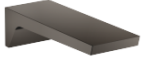




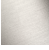



CL.1 Bath spout for wall mounting - Brushed Dark Platinum

CL.1

13 801 705



- 205mm projection
- rectangular spray pattern with 55 individual jets
- hole diameter 37 mm
- 1/2" connection
- plug-link mounting
- max. flow 24.6 l/min at 3 bar flow pressure
- WRAS 1512012

| | | |
|--|-------------------------------|---------------|
|  | Brushed Dark Platinum | 13 801 705-99 |
|  | Chrome | 13 801 705-00 |
|  | Brushed Platinum | 13 801 705-06 |
|  | Dark Chrome | 13 801 705-19 |
|  | Brushed Champagne (22kt Gold) | 13 801 705-46 |
|  | Champagne (22kt Gold) | 13 801 705-47 |

Recommended miscellaneous



Concealed wall elbow -

35 085 970 90

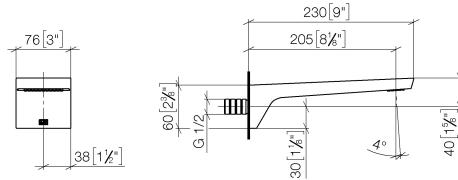
- max. recess depth 163 mm
- min. recess depth 90 mm

CL.1 Bath spout for wall mounting - Brushed Dark Platinum

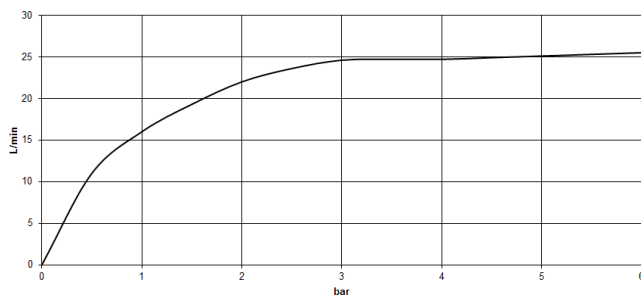
CL.1

13 801 705

mm [inches]



Flow rate chart



Codes & Standards

ASME A112.18.1

cUPC

DIN 4109

ISO 3822

Scottish Water
Byelaws

UK Water Supply
Regulations

Ü-Zeichen



CL.1 Bath spout for wall mounting - Brushed Dark Platinum

CL.1

13 801 705

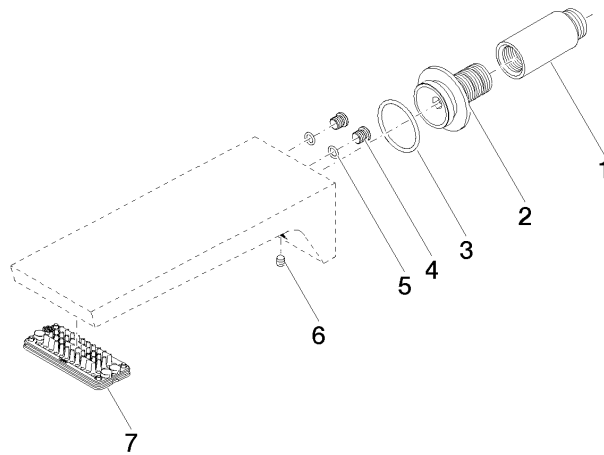
Certificates

IAPMO_4976

LGA_28

WRAS_1512

Product version from 3/9/2015





CL.1 Bath spout for wall mounting - Brushed Dark Platinum

CL.1

13 801 705

Spare parts list

Product version from 3/9/2015

| No. | Item Number | Name | Quantity used | Delivery time |
|-----|--------------------|-----------|---------------|---------------|
| | 09 24 03 081 10 90 | extension | 9 | 2 |