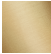









VAIA Two-hole bridge mixer for rinsing/Profi spray - Brushed Durabrand (23kt Gold)

VAIA

19 815 809	Product version from 7/1/2023		
	<ul style="list-style-type: none"> • 241mm projection • pivotable spout 360° • air-enriched flow • max. flow 7 l/min at 3 bar flow pressure • lead-free • This product can help a building meet the requirements of Green Building Rating Systems, e.g. LEED®, BREEAM®, DGNB 	 <div> Brushed Durabrand (23kt Gold) </div>	19 815 809-28
	Two-hole mixer for combining with rinsing/Profi spray only	 <div> Chrome </div>	19 815 809-00
		 <div> Brushed Platinum </div>	19 815 809-06
		 <div> Platinum </div>	19 815 809-08
		 <div> Durabrand (23kt Gold) </div>	19 815 809-09
		 <div> Dark Chrome </div>	19 815 809-19
		 <div> Matte Black </div>	19 815 809-33
		 <div> Brushed Bronze </div>	19 815 809-42
		 <div> Brushed Champagne (22kt Gold) </div>	19 815 809-46
		 <div> Champagne (22kt Gold) </div>	19 815 809-47
		 <div> Brushed Chrome </div>	19 815 809-93
		 <div> Brushed Dark Platinum </div>	19 815 809-99

Recommended miscellaneous

	VAIA Dispenser with rosette - Brushed Durabrand (23kt Gold)	82 434 809-28
		

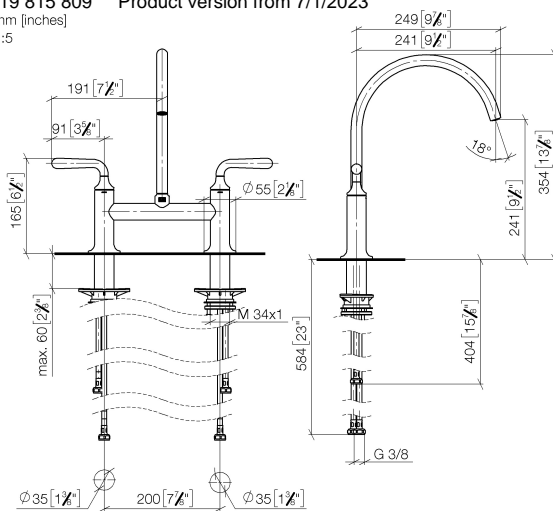
VAIA Two-hole bridge mixer for rinsing/Profi spray - Brushed Durabron (23kt Gold)

VAIA

19 815 809 Product version from 7/1/2023

mm [inches]

1:5



Flow rate chart



Codes & Standards

DIN 4109

ISO 3822

Ü-Zeichen



VAIA Two-hole bridge mixer for rinsing/Profi spray - Brushed Durabrass (23kt Gold)

VAIA

19 815 809 Product version from 7/1/2023

Certificates and sustainability

LGA_38

VAIA Two-hole bridge mixer for rinsing/Profi spray - Brushed Durabronz (23kt Gold)

VAIA

19 815 809 Product version from 7/1/2023

Parts for other
finishes can be found
here: Chrome



Spare parts list

No.	Item Number	Name	Quantity used	Delivery time
7	04 30 04 101 00 90	hose	2.00	2
5	04 30 11 040 00 90	fixing set	2.00	2
6	04 30 04 100 00 90	hose	2.00	2
4	90 90 03 130 00 90	top	1.00	2
8	90 90 03 131 00 90	top	1.00	2
3	90 12 12 232 00 90	fixing cap	2.00	2
2	90 20 80 057 00-28	handle	2.00	20
1	90 28 22 396 00-28	spout	1.00	20