

Deck valve anti-clockwise closing cold - Brushed Durabross (23kt Gold) CL.1

20 000 716



Fits: CL.1, CYO

- hole diameter 32 mm
- rosette 60 x 60 mm
- with cold marking

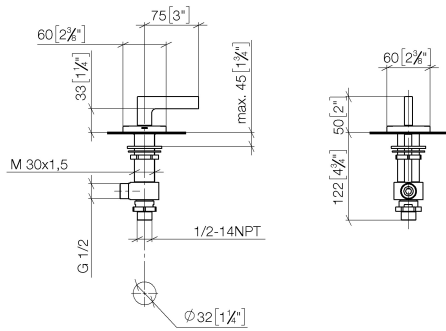
| | | |
|--|-------------------------------|---------------|
|  | Brushed Durabross (23kt Gold) | 20 000 716-28 |
|  | Chrome | 20 000 716-00 |
|  | Brushed Platinum | 20 000 716-06 |
|  | Dark Chrome | 20 000 716-19 |
|  | Brushed Champagne (22kt Gold) | 20 000 716-46 |
|  | Champagne (22kt Gold) | 20 000 716-47 |
|  | Brushed Dark Platinum | 20 000 716-99 |

Deck valve anti-clockwise closing cold - Brushed Durabron (23kt Gold)

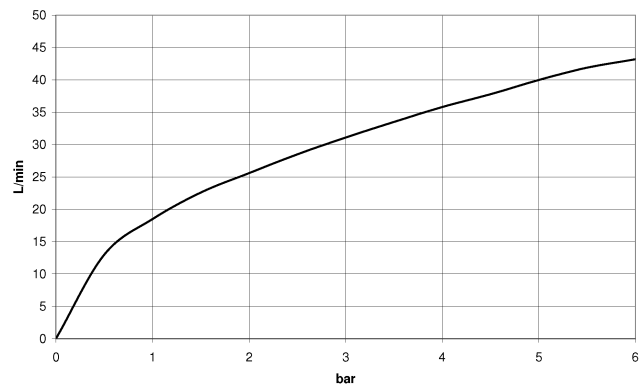
CL.1

20 000 716

mm [inches]



Flow rate chart



Codes & Standards

DIN 4109

ISO 3822

Ü-Zeichen



Deck valve anti-clockwise closing cold - Brushed Durabrass (23kt Gold)

CL.1

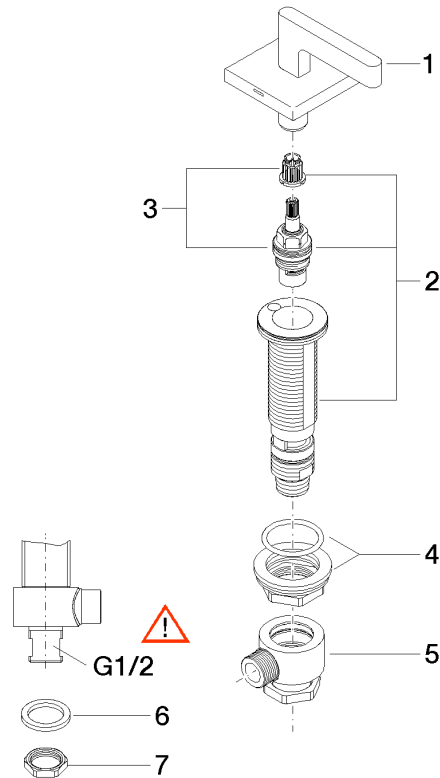
20 000 716

Certificates

LGA_28

Product version from 6/1/2015

Parts for other
finishes can be found
here: [Chrome](#)





Deck valve anti-clockwise closing cold - Brushed Durabrass (23kt Gold)

CL.1

20 000 716

Spare parts list

Product version from 6/1/2015

| No. | Item Number | Name | Quantity used | Delivery time |
|-----|--------------------|-----------------|---------------|---------------|
| | 90 20 70 057 01-28 | handle (cold) | 7 | 20 |